



VICTORIA UNIVERSITY OF
WELLINGTON
TE HERENGA WAKA
NEW ZEALAND



International
College



2025

FOUNDATION STUDIES PROGRAMME PROSPECTUS

TOP 2%
OF THE WORLD'S
UNIVERSITIES*

*Source: QS World University
Rankings 2025

#1 IN NEW ZEALAND FOR
RESEARCH INTENSITY*

*Latest Performance-Based Research Fund Quality Evaluation

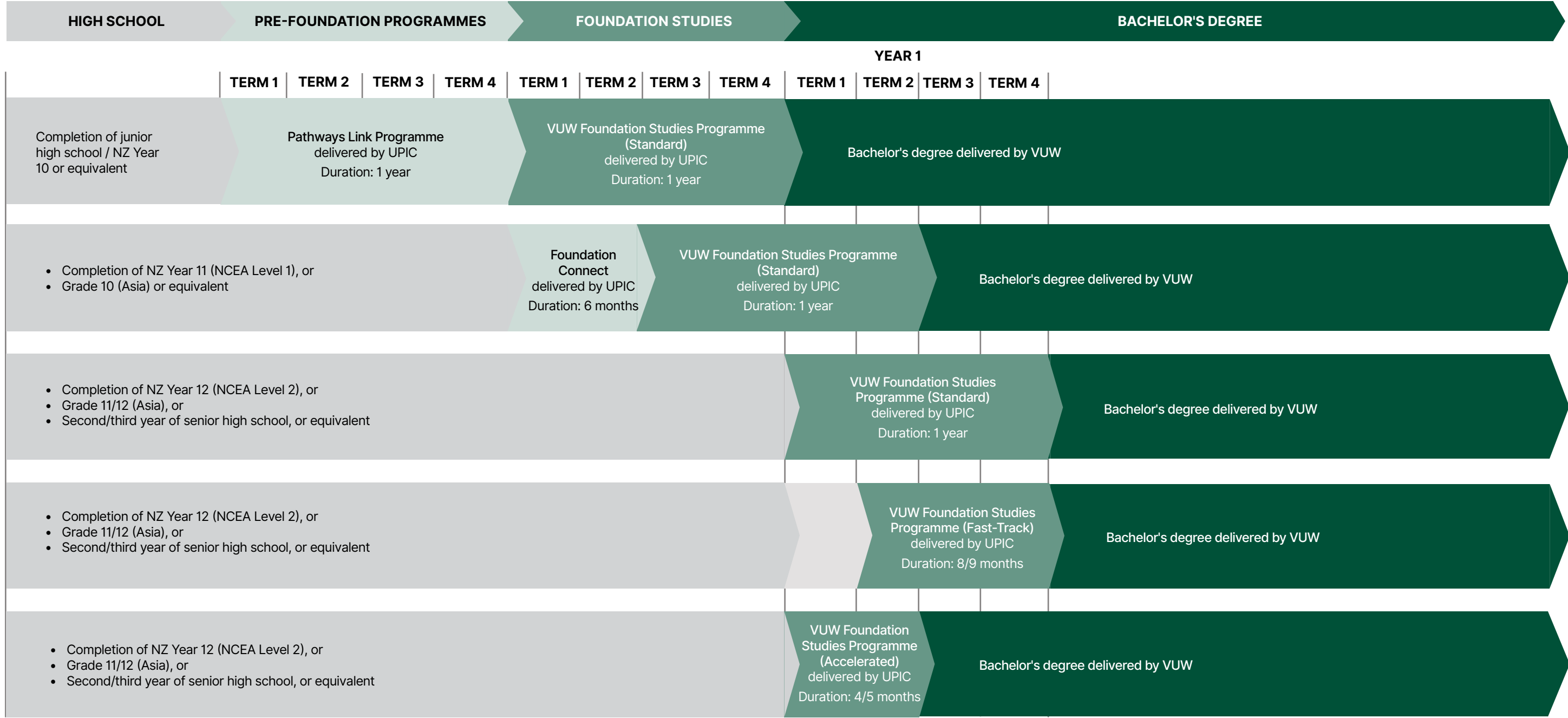
POWERED BY UP EDUCATION

PATHWAY PROGRAMME OVERVIEW

THE PROGRAMMES WE OFFER

Pathways Link Programme
Foundation Connect¹
Victoria University of Wellington Foundation Studies Programme (Standard) (Level 3)²
Victoria University of Wellington Foundation Studies Programme (Fast-Track) (Level 3)²
Victoria University of Wellington Foundation Studies Programme (Accelerated) (Level 3)²

1. The programme is marketed as Foundation Connect and the programme name is registered as "Intensive General English Course" at NZQA.
2. Victoria University of Wellington Foundation Studies Programme is registered as UP International College New Zealand Foundation Studies Programme (Level 3) at NZQA.



WELCOME TO VICTORIA UNIVERSITY OF WELLINGTON

Nau mai, haere mai ki Te Herenga Waka

Aotearoa New Zealand and Te Herenga Waka—Victoria University of Wellington are pleased to welcome UP Education students from all over the world to our creative capital city, to join our diverse and thriving community. We are looking forward to supporting you as you experience a world-class education in a safe and truly liveable environment.

Our whole university community is excited to welcome you. International students bring a global outlook that helps make our community richer. Our university has been a place where diverse experiences come together to not only create a vibrant student experience, but it is also a unique platform for launching careers both in New Zealand and around the world.



Professor Nic Smith
Vice-Chancellor
Victoria University of Wellington



CONTENTS

Aotearoa New Zealand	6	UP International College New Zealand	17	Entry requirements	26
Study and thrive in Wellington	8	Foundation Studies	18	UP English Language Test	27
About Victoria University of Wellington	10	Foundation Connect	20	Programme options and fees & Scholarships	28
Degree options	12	Pathways Link Programme	21	Accommodation fees	29
Most in-demand degrees	13	Life on campus	22	How to apply	30
Degree progression requirements	14	Learner Success Team	24	Talk to our students	31
		Administrative Service Support & Accommodation	25		

AOTEAROA NEW ZEALAND

A GREAT PLACE TO STUDY, LIVE AND WORK

New Zealand is world-famous for its friendly people, spectacular landscape and relaxed lifestyle. Discover what it's like to be a student here. Learn about the different types of accommodation. Explore our cities and regions, and find out about the cost of living.

FEEL SAFE AND SECURE

New Zealand is recognised as one of the most peaceful, least-corrupt countries in the world, giving you a sense of security and confidence while you concentrate on your studies or as you explore our beautiful country.

WORK-LIFE BALANCED LIFESTYLE

New Zealand is known for its strong culture of family and community, along with a healthy balance between career and personal life. Companies often offer flexible working hours and generous holiday leave, allowing employees to pursue interests outside of work.

WORLD-CLASS EDUCATION

All of New Zealand's eight universities rank in the top 3% globally. Students are encouraged to solve problems, collaborate, and innovate.



POST-STUDY WORK OPPORTUNITIES

Take your next step after graduation with a post-study work visa¹. Eligible international students may remain in New Zealand for up to three years to gain relevant work experience and transferable skills.



GLOBALLY-RECOGNISED QUALIFICATIONS

A New Zealand qualification is a valuable asset that can give you a head start in the international job market. It is recognised by over 50 countries. These include the United States, the United Kingdom and Australia.



EMBRACING ALL PEOPLES

New Zealanders, or Kiwis, embrace people from diverse backgrounds with warmth and respect. Our friendly culture, our rich history, our laidback, open-mindedness and our diverse traditions respect everyone's rights, beliefs, and choices.



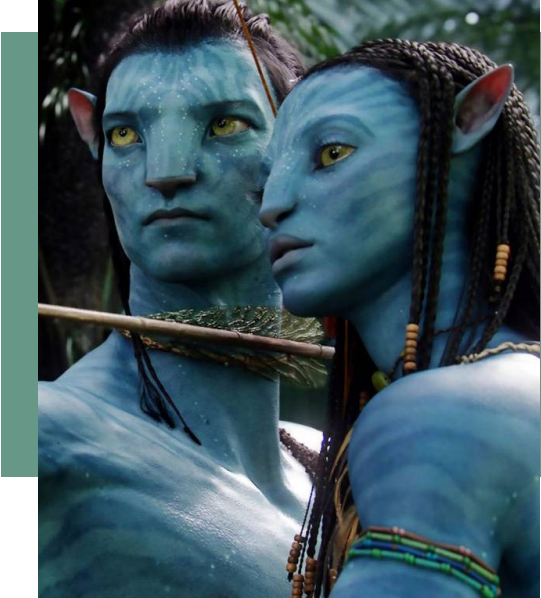
A HIGH STANDARD OF LIVING

New Zealand boasts a high standard of living, with excellent education, healthcare, transport, and infrastructure. Our economy is strong, and our political system is stable. The country's transparent legal and governmental systems safeguard the rights of both citizens and visitors.

QUICK FACTS

- NZ Population:** 5,338,900*
- Largest city:** Auckland – population 1,739,300*
- Capital City:** Wellington
- Official languages:** English, Māori, New Zealand Sign Language
- Currency:** New Zealand dollar
- Climate:** Summer – Ave. 24°C (75°F) Winter – Ave. 16°C (60°F)
- Warmest months:** January, February
- Coldest months:** July, August

*Statistics New Zealand, May 2024.



"There was something profoundly different about New Zealand compared with the rest of the world, and it was something the world could learn from.

It's a certain sense of duty to each other, that you're part of the team, that you will sacrifice for each other. That empathy, that love and respect, whatever it is that binds you together – we hope to be as much a part of that as we can be."

James Cameron
Hollywood Director of the movie, Avatar



1. For more information, please visit <https://www.immigration.govt.nz/new-zealand-visas/apply-for-a-visa/about-visa/post-study-work-visa>



1st
safest study destination

AECC Insights 2024



4th
most peaceful country globally

Global peace index score 2024



Top 3%
universities in the world

QS World University Rankings 2025



1st
work-life balance globally

Global employment company, Remote



30%
of the area is national parks



9th
longest coastline

STUDY AND THRIVE IN WELLINGTON

LIVEABILITY AND CONNECTIVITY

Wellington, surrounded by a beautiful harbour and green hills, is often ranked as one of the world's most liveable cities. With a population of 422,000, it's well-connected and easily accessible at the bottom of the North Island. Its compact size makes it easy to navigate.

QUALITY OF LIFE

As the capital of New Zealand, Wellington benefits from strong collaboration between education providers, research institutions, the business community, and government. It's a city where people love to live, study, and work, and Wellingtonians consistently top the charts in terms of quality of life.

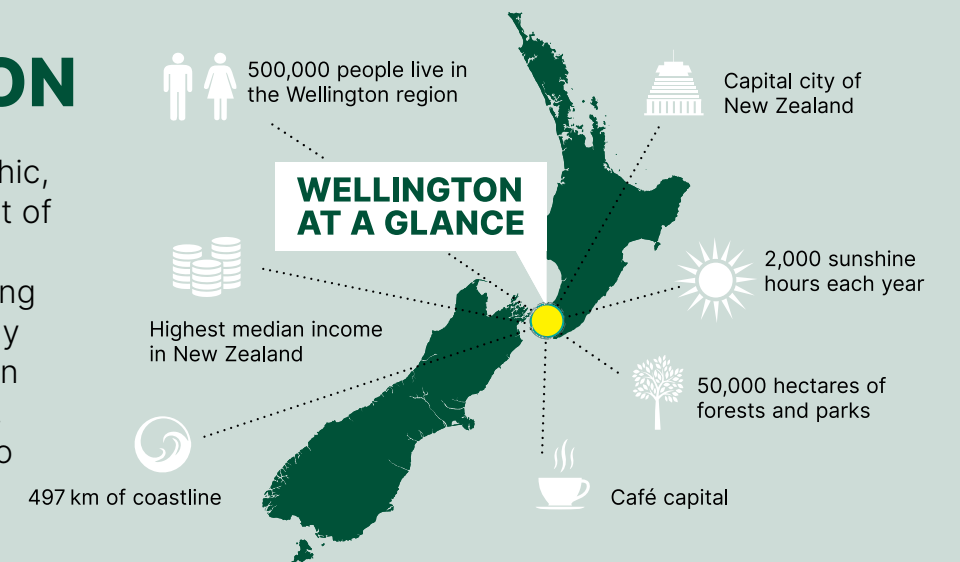
LIFESTYLE AND CULTURE

Wellington is compact and convenient, offering great shopping, beaches, mountain bike trails, native bush, restaurants, and the best café culture in the country. You can visit galleries and museums, enjoy vibrant nightlife, explore night markets, and attend festivals, theatre shows, and music gigs.

DISCOVER WELLINGTON

Wellington is the geographic, political, and cultural heart of New Zealand. You'll find a great quality of life, a strong global outlook, and a study experience to remember in our beautiful harbour city. There is no better place to shape your future.

For more information, go to www.wgtn.ac.nz/international/why-wellington



WELLINGTON IS AN IDEAL PLACE TO STUDY

CREATIVE

Wellington is New Zealand's most creative city. It has topped the list for the past 20 years. You can find Wētā Workshop and the Museum of New Zealand Te Papa Tongarewa here.

(Infometrics Creativity Index 2023)

SAFE

Wellington is a safe and friendly place to live. It's ranked among the top 20 safest cities in the world.

(Safest Cities in the World 2024, World Population Review)

CLEAN AND GREEN

Renowned for its clean, fresh air and green outdoor spaces, Wellington city has more than 100 parks and playgrounds, as well as a stunning waterfront, beaches, forests, and coastline.

WALKABLE

Wellington is New Zealand's most walkable city, with the average time for any Wellingtonian to walk to all amenities being 14 minutes.

(Urban Intelligence 2023)

HIGH TECH

Wellington is at the forefront of technology and innovation, with many tech companies calling it home. It's named as one of the world's '21 Places of the Future'.

(Cognizant Center for the Future of Work 2021)

HAPPY

New Zealand is known for being one of the world's most sociable and supportive countries. It's no surprise that it ranks as the eleventh happiest country in the world.

(World Happiness Report 2024)



**NO.1
ENVIRONMENTAL
SECURITY**
CITY IN THE WORLD'



**CAPITAL
CITY**
OF NEW ZEALAND



**7TH
SAFEST**
CITY IN THE
WORLD'



**50,000
HECTARES**
OF FOREST AND
PARKS



**497
KMS**
OF
COASTLINE



ABOUT VICTORIA UNIVERSITY OF WELLINGTON

Our students come from about
120
countries and the world

Top 1%
of the world's universities in
15 subject areas
(QS World University Rankings by
Subject 2024)

ZERO
CARBON BY 2030



Top 100
in the world in
10 subjects
(QS World University Rankings
by Subject 2024)



96% of graduates were employed prior to
or within six months of completing
their degree
(2022–2023 Graduate Destinations Survey)



3,000 of our **17,000** students
are international students
170+ programmes
40+ research institutes
4 libraries
140+ clubs and societies



NEW ZEALAND'S LEADING UNIVERSITY

When you study at Victoria University of Wellington, you will enjoy a great quality of life, a diverse and welcoming environment, and a student experience to remember.

Located in New Zealand's vibrant capital city, Victoria University of Wellington enjoys privileged access to the country's leaders, influencers, and decision makers. This in turn shapes our world-class degrees. When you study in Wellington, you also have access to the city's many museums, archives, libraries, scientific institutes, cultural bodies, financial, legal and business institutions, and political and government agencies.

OUTSTANDING RESEARCH QUALITY

Victoria University of Wellington is New Zealand's leading university for research intensity, as confirmed by the latest Performance-Based Research Fund (PBRF) Quality Evaluation by the New Zealand Government. With 177 researchers actively contributing to sustainable development¹, you'll have the opportunity to learn from world-class experts in state-of-the-art facilities, addressing critical social, economic, and environmental challenges.

KEY PARTNERSHIPS

You'll benefit from studying at a capital city university. The university has strong teaching and research partnerships with government, business, research institutes and the technology and arts sectors.

THREE YEARS OF POST-STUDY WORK RIGHTS

After graduating with a 3- or 4-year bachelor's degree from Victoria University of Wellington you will be eligible to apply for a three-year post study work visa².

FLEXIBLE STUDY

Choose a conjoint or double degree, or a double major to build a study programme that suits your interests and career goals.

¹ Work and Study 2023
² Refer to the Immigration New Zealand website for most updated information:
<https://www.immigration.govt.nz/new-zealand-visas/apply-for-a-visa/about-visa/post-study-work-visa>



Minel Espeleta

Minel Espeleta made the decision to move to New Zealand to pursue a high-quality education alongside her two younger siblings.

She says the pandemic hit her family hard, but with the support of UP International College New Zealand, she was able to consider degree-level study at Victoria University of Wellington.

As the eldest sibling, Minel leads the way for her family, and proudly graduated with a Bachelor of Arts in 2021. Her first job out of university was with the Inland Revenue Department in the Government precinct of Wellington. Minel continues to thrive in her new role as consultant for the Ministry of Justice.

When asked about the value of being educated in New Zealand, she says, everyone deserves the opportunity to pursue a great education — no matter where you come from, or how much money you have in the bank.



DEGREE OPTIONS

TRANSITION TO UNIVERSITY

Victoria University of Wellington offers a wide range of undergraduate courses for you to choose from for your packaged offer. Our Education Counsellor is available to offer their expertise if you want to learn more about your chosen undergraduate degree. Once you successfully complete your Foundation course, you will be awarded with a completion certificate from the University.

Faculty	Programme
Education	Bachelor of Arts (BA)
	Bachelor of Education (Teaching) Early Childhood
Humanities and Social Sciences	Bachelor of Arts (BA)
	Bachelor of Music (BMus)
	Bachelor of Popular Music (BPM)
	Bachelor of Communication (BC)
	Bachelor of Global Studies (BGS)
Law	Bachelor of Laws (LLB)
Business and Government	Bachelor of Commerce (BCom)
Architecture and Design Innovation	Bachelor of Architectural Studies (BAS)
	Bachelor of Building Science (BBSc)
	Bachelor of Design Innovation (BDI)
Health	Bachelor of Health (BHIth)
Engineering	Bachelor of Science (BSc) (Computer focused)
	Bachelor of Engineering with Honours (BE(Hons))
Science	Bachelor of Biomedical Science (BBmedSc)
	Bachelor of Psychology (BPsyc)
	Bachelor of Science (BSc)
	Bachelor of Environment and Society (BEnvSoc)

Please note that the conditional Bachelor offer for Victoria University of Wellington is a preliminary offer only. Students must complete their full application upon starting the Foundation course. The availability of the selected program and intakes may change, and final decisions are at the discretion of the universities.

MOST IN-DEMAND DEGREES

Bachelor of Commerce



Commerce (Business) is one of the world's moving forces, shaping societies and connecting people around the globe.

- Expertise from professionals working at the highest levels of business and government.
- Benefits from being taught from its capital city location amongst the nation's administrative hub.

Bachelor of Science



Follow your passion, develop problem-solving skills, and dive into a fascinating career with a Bachelor of Science.

- Hands-on laboratories, field trips, and summer scholarship opportunities.
- Choose from more than 25 majors across the physical and social sciences— from Marine Biology to Artificial Intelligence.
- Wellington has the highest concentration of scientists and science organisations in New Zealand.

Bachelor of Arts



Explore your passions through a rich variety of subjects and develop the creativity and flexibility needed in a changing job market.

- Opportunity to explore up to three majors in your first year, so you can discover your passions before deciding where to specialise.
- Ranked in the top 1 percent worldwide for Arts and Humanities (2024 QS World University Rankings).

Bachelor of Architectural Studies



Designing and creating environments that can support the way people and cultures want to live, work, and play.

- Expert lecturers with international reputations in sustainable architecture, urban design, and other creative disciplines.
- Offers four majors: Architecture, Architecture History and Theory, Interior Architecture, and Landscape Architecture.
- World-class facilities, exhibition spaces, and technology, including 3D scanners, printers, a virtual reality studio, and a robotic arm.

Bachelor of Psychology



Gain insights into why people think, act, and feel the way they do. Examine social behaviour, emotions, and personalities.

- A combination of Psychology with Humanities and Arts subjects such as Criminology, Education, and Sociology.
- Learn about perception—how our brains can tell red from blue or hot from cold - and discover the way we store and retrieve memories.
- Learn about how we define ourselves and become the people we are—look at the roles of culture, experiences, and thinking processes.

Bachelor of Design Innovation



If you love good design—whether it be of objects, computer graphics, systems, or experiences—this is the right degree for you.

- Prepare for a career in one of the many expanding design-related industries.
- You'll learn how to take an experimental approach to design that encourages creative and thoughtful design solutions.
- This degree is cross-disciplinary; you'll be encouraged to study and work in subject areas outside Design.

Bachelor of Popular Music



Immerse yourself in a world of sound, expression, and innovation. Combine critical study and creative practice in New Zealand's most flexible music degree.

- The Electronic Music and Popular Music Studies majors are the first of their kind in New Zealand.
- Valuable opportunities for work-integrated learning.
- Opportunity to use the university studios and recording facilities.
- No need to have any prior musical training—programme open to students from a wide range of study backgrounds.

DEGREE PROGRESSION REQUIREMENTS

To gain entry to a Victoria University of Wellington undergraduate degree from the foundation studies programme:

- Achieve a minimum of 55% in English I, 60% in English IIA, 65% in English IIB and 50% in two other core subjects.
- Achieve 50% or better in a minimum of six optional academic subjects.

Programmes	Trimester intake February = Trimester 1 July = Trimester 2 November = Trimester 3	Minimum Duration (Years)	Minimum English language proficiency	Notes
Bachelor of Architectural Studies	February	3	55% in English I, 60% in English IIA, 65% in English IIB	Entry into second year is competitive and is based on first-year results.
Bachelor of Arts	February, July	3	55% in English I, 60% in English IIA, 65% in English IIB	
Bachelor of Biomedical Science	February, July	3	55% in English I, 60% in English IIA, 65% in English IIB	
Bachelor of Building Science	February, July	3	55% in English I, 60% in English IIA, 65% in English IIB	Entry into second year is based on passing all the required core courses in the first year. There is a longer duration to complete your programme if you commence in July.
Bachelor of Commerce	February, July, November	3	55% in English I, 60% in English IIA, 65% in English IIB	Limited courses offered in the November intake may lead to longer duration to complete programme.
Bachelor of Communication	February, July	3	55% in English I, 60% in English IIA, 65% in English IIB	
Bachelor of Design Innovation	February, July	3	55% in English I, 60% in English IIA, 65% in English IIB	
Bachelor of Education (Teaching) Early Childhood	February	3	IELTS 7.0, with a minimum of 7.0 in each band	Supply overseas police certificate; a selection meeting, and a numeracy and literacy assessment are required.
Bachelor of Engineering (Honours)	February, July	4	55% in English I, 60% in English IIA, 65% in English IIB	
Bachelor of Environment and Society	February	3	55% in English I, 60% in English IIA, 65% in English IIB	
Bachelor of Global Studies	February, July	3	55% in English I, 60% in English IIA, 65% in English IIB	
Bachelor of Health	February, July	3	55% in English I, 60% in English IIA, 65% in English IIB	
Bachelor of Laws	February	4	55% in English I, 60% in English IIA, 65% in English IIB	Entry into the second year is competitive and based on first-year results; entry to the parallel third- and fourth-year Honours programme is by invitation after high achievement in second year.
Bachelor of Popular Music	February	3	55% in English I, 60% in English IIA, 65% in English IIB	Audition recording or composition may be requested, depending on major. Songwriting major will be offered from 2026.
Bachelor of Science	February, July	3	55% in English I, 60% in English IIA, 65% in English IIB	There is a longer duration to complete your programme if you commence in July for specific majors—check with International Office.

Please note that the conditional Bachelor offer for Victoria University of Wellington is a preliminary offer only. Students must complete their full application upon starting the Foundation course. The availability of the selected program and intakes may change, and final decisions are at the discretion of the universities.





WELCOME TO THE UP INTERNATIONAL COLLEGE NEW ZEALAND



Julian Latimer
Principal,
UP International College
New Zealand

Victoria University of Wellington is all about providing quality educational opportunities to help students transition into study and work.

UP Education and Victoria University of Wellington have a supportive programme of regular meetings with our students in their final term, so that they have the knowledge, skills and understanding to start their University with confidence and care.

Our students meet the Victoria University of Wellington team regularly, so they have their own relationships with University staff before they even start.

The three programmes for Victoria University of Wellington at UP Education (Standard, Fast-Track and Accelerated) are tailor-made to meet students where they are at and to provide them with the tools to be successful in their programmes and into the future.



UP INTERNATIONAL COLLEGE NEW ZEALAND

PROGRAMME DELIVERY

Partnered with Victoria University of Wellington, UP Education has been delivering foundation programmes for over 8 years. All teachers are trained and registered with the Teaching Council of New Zealand.

We also place great emphasis on student welfare and ensure a high standard of care. Our dedicated staff are experienced in looking after the educational, practical and social needs of students.

LOCATION

Our campus is located in the hub of Wellington CBD.



"It was an amazing experience to study with people from all over the world and get to know about them. Teachers were all very supportive and I had no hesitation to ask any kinds of questions in and out of the classes. They taught me not only the class contexts but also it is okay to ask help when I need them."

Haruka Yanagidani

from Japan

Victoria University of Wellington
Foundation Studies Programme Graduate

ENDORSEMENT FROM NEW ZEALAND GOVERNMENT

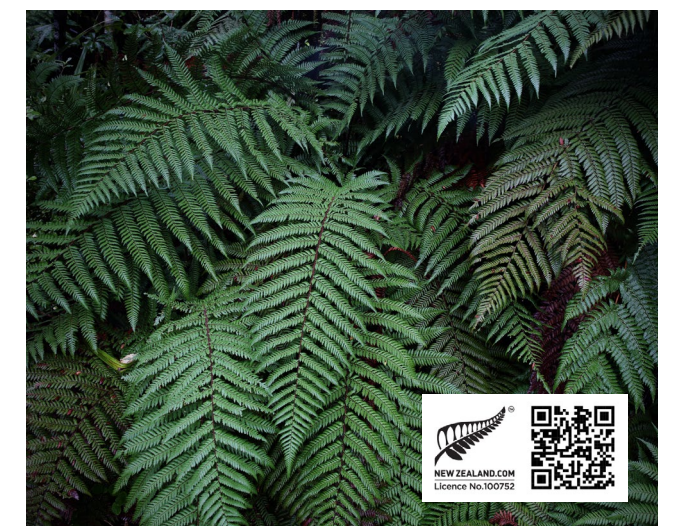
The Victoria University of Wellington Foundation Studies Programme, delivered by the UP International College New Zealand, is proudly a Licensee of the FernMark Licence Programme, a country of origin trademark programme endorsed and recognised by the New Zealand Government.

It's a symbol people recognise and trust - a trademark that embodies our values of kaitiaki, integrity, ingenuity - the values of our New Zealand Story.

HISTORY OF THE SILVER FERN

The Silver Fern is a long-standing and respected symbol of New Zealand. Since the late 19th century, it has been proudly worn by sports teams and soldiers and used to represent our country globally. Māori used the fern's silver underside to navigate by moonlight, illuminating their path through the forest.

Today, the Silver Fern continues to guide us, just as it has for over 150 years. Supported by the New Zealand Government, key businesses, Tourism New Zealand, and New Zealand Trade and Enterprise, the FernMark is a valued symbol of our country. It represents New Zealand globally and attracts international students to our shores.





FOUNDATION STUDIES

WHO IS THIS PROGRAMME FOR?

- New Zealand secondary school Year 12 (NCEA Level 2), or
- Grade 11/12 (Asia), or
- Second/third year of senior high school, or equivalent
- For students who do not meet the requirements above, there is a Foundation Connect option.

TO ENTER AN UNDERGRADUATE PROGRAMME:

- Successfully complete 120 credits in the Foundation Studies Programme
- Achieve a minimum of 55% in English I, 60% in English IIA , 65% in English IIB and 50% in two other core subjects, equal to 60 credits
- Achieve 50% or higher in six optional subjects equal to 60 credits (300 marks out of a possible 600)



Scan to watch Istavrino's interview



"Getting a foundation in English, media and design studies will aid me in my university studies. I have always been interested in film and the arts from a young age. I chose to study in Wellington because it has always

been a top travel destination for me, seeing photos of the scenery and hearing about the work culture has always enticed me."

Istavrino
from Singapore
Victoria University of Wellington
Foundation Studies Programme Graduate

SUBJECTS

- **Core**
 - English (I, IIA, IIB - 40 credits)
 - Introductory Mathematics (10 credits)
 - New Zealand Culture and Society (10 credits)
- **Optional (10 Credits each)**
 - **Mathematics:** Algebra, Statistics
 - **Sciences:** Biology, Physics
 - **Arts:** Media Studies, Design & Society, History
 - **Commerce:** Tourism, Microeconomics, Macroeconomics, Marketing, Management Studies

Availability of subjects might change each term.

ASSESSMENTS

We prepare students for assessments that will get them into the Victoria University of Wellington's degree programmes. Our assessments are benchmarked against international standards and are a stepping stone to achievement.

All assessments are internally assessed. The final mark for subjects is made up of a combination of tests, assignments, projects and presentations.

DESIGNING YOUR STUDY

Students have two ways of choosing their subjects.

Option 1: Choose your subjects at your own interests

Enrolled students will get a range of choices ready, before or at orientation.

Option 2: Choose a pathway towards your degree

A student can choose a pathway to support their degree choice: Science & Maths, Commerce, Media & Design.

Media and Design Pathway

Media Studies 1
Media Studies 2
Design & Society 1
Design & Society 2
Marketing



Science and Maths Pathway

Environmental Science 1
Environmental Science 2
Statistics



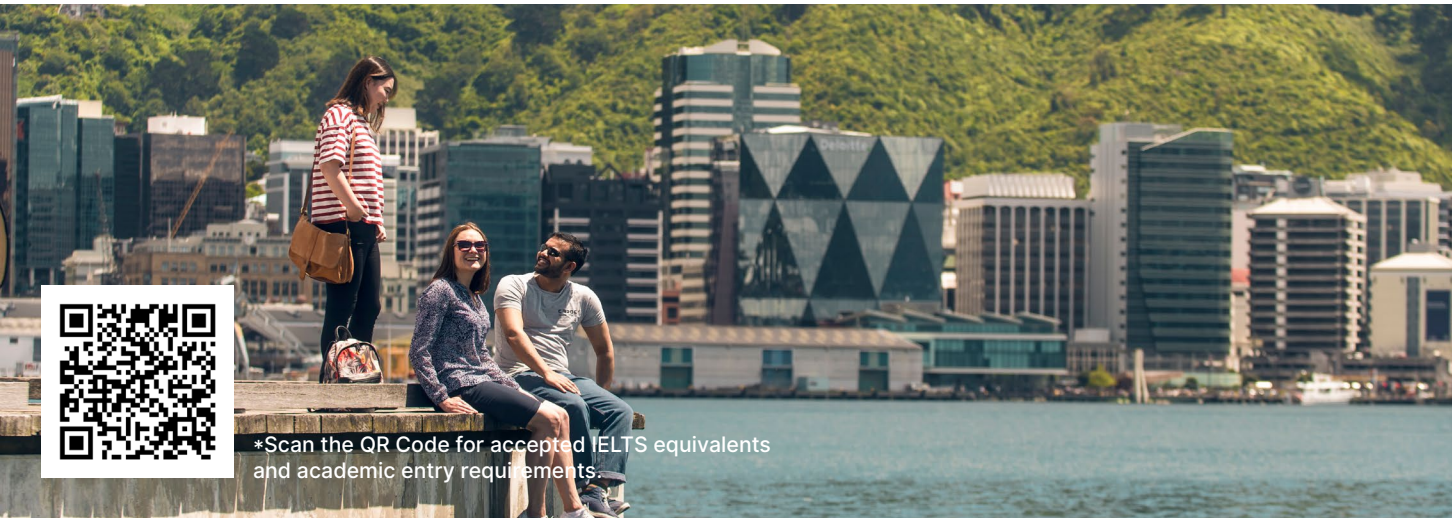
Commerce Pathway

Macroeconomics
Microeconomics
Management Studies



SAMPLE COURSE PROGRESSION

Programme option	English requirement*	2025												2026											
		J	F	M	A	M	J	J	A	S	O	N	D	J	F	M	A	M	J	J	A	S	O	N	D
Accelerated (6 months)	IELTS 6.0 (min. 5.0 in all bands) or equivalent																								
Fast-track (8-9 months)	IELTS 5.5 (min. 5.0 in all bands) or equivalent																								
Standard (12 months)	IELTS 5.0 (min. 4.5 in all bands) or equivalent																								



*Scan the QR Code for accepted IELTS equivalents and academic entry requirements.

Victoria University of Wellington offers a diverse and welcoming environment with plenty of opportunities to enhance your student experience. Get involved by joining a club, mentoring, or volunteering. Participate in the free Wellington International Leadership Programme or Wellington Plus to develop new skills, make friends, and prepare for your future career.

Victoria University of Wellington has three campuses and several sites spread out over Wellington city.

KELBURN CAMPUS

At the Kelburn campus, you can access student support services, administrative offices, Te Pātaka Kōrero—The Library, and five Faculties.

PIPITEA CAMPUS

Located in the heart of Wellington's legal, government, and business district, the Pipitea campus hosts the Wellington School of Business and Government and the Faculty of Law.

TE ARO CAMPUS

Located adjacent to bustling Cuba Street, the Te Aro campus hosts the Architecture and Design Innovation programmes.

FACILITIES AND SERVICES

The University has a wide range of facilities and student services to help you succeed academically, to support you during your studies, and to help you have the best student experience.

- Four libraries
- Academic and student learning support
- Recreation centre and gym
- Student health and counselling services
- Disability services
- Financial advice
- Religious support
- Student employment services
- Food and retail outlets
- Art gallery

Academic learning is the key to success, but learning outside the classroom is equally valuable. We encourage our students to make friends, have fun and fully embrace all aspects of New Zealand or Australian life.

1000+ students from 50+ countries study at UP Education. Our main New Zealand campus is in the heart of central Auckland, with a second campus in Wellington where the Victoria University of Wellington Foundation Studies Programme is offered.

STUDENT SERVICES

The wellbeing of students is our top priority as it is the key to both academic and personal success.

THE TUTOR SYSTEM

We encourage you to develop good study habits and we offer personalised support to help you reach your goals. Each student is assigned a tutor to supervise the study and provide individual guidance, meeting regularly to check progress, celebrate success and overcome challenges.

SETTLING INTO STUDY

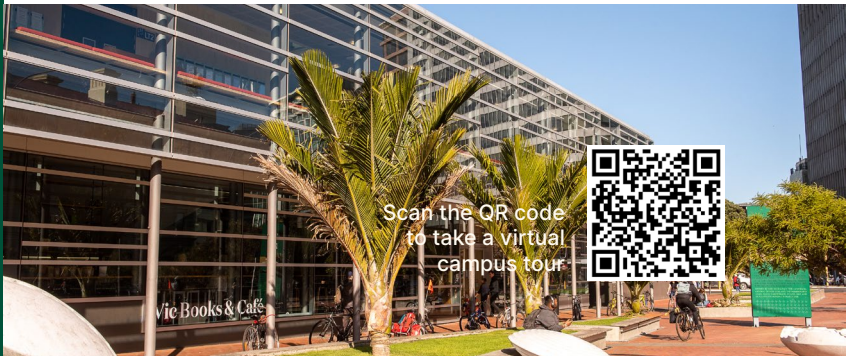
Offering a level of care that sets us apart, UP Education provides help and support to all international students from the moment they contact us, to arriving in New Zealand and throughout their studies. We're here to help ensure life in New Zealand is happy and rewarding.

ORIENTATION

Our Orientation programme helps you settle in when you first arrive. You'll receive an information handbook that includes homestay and accommodation guidelines.

TIMETABLE

Student timetables are designed to help you become accustomed to university study, so you are expected to attend all lessons and work on study and revision between classes. Each lessons is 55 minutes in length.



SAMPLE TIMETABLE

SDS = Self-directed Study

	MON	TUE	WED	THU	FRI
10:00-11:10	SDS	Biology - Organisms	SDS	Algebra	English 2(A)
11:10-12:20	Tertiary Study Skills	Algebra	English 2(A)	SDS	Biology - Organisms
12:20-13:30	English 2(A)	SDS	Biology - Organisms	SDS	Algebra
13:30-14:40	Biology - Organisms	SDS	Algebra	English 2(A)	SDS
14:40-15:50	Algebra	English 2(A)	Tertiary Study Skills	Biology - Organisms	SDS
15:50-17:00	SDS	Biology - Organisms	SDS	Algebra	English 2(A)

Please note that exact time of each class might be subject to change.

LIVING COSTS IN
WELLINGTON

Cost of living*	Homestay estimated weekly cost in NZD
Accommodation	\$440
Electricity, water & gas	Included in homestay fee
Mobile phone plan	\$15
Public transport	\$0 - \$50
Food	Included in full-board homestay fee
Free time activities	\$50 - \$150

**Please note that this table is only applicable to Homestay prices. Costs can vary depending on lifestyle, accommodation, and hobbies and interests. However, for a reasonable standard of living, the estimated living cost per year is \$20,000 to \$27,000 NZD.*

ADDITIONAL COSTS

- Flights to and from New Zealand
- Tuition fees
- Clothes



"I won the Study Award at graduation and it was very appreciated that Victoria University of Wellington and UP Education gave me this opportunity to get NZ\$5000 to go towards university fees. During my studies at UP Education, I have been a student mentor which is a place to help

other students who have any problems. I have shown courage, conscientiousness, endurance, resilience, and a commitment to excellence in the application."

Pei-Chen Wu
from Taiwan
Victoria University of Wellington
Scholarship Winner



STUDENT
SUPPORT

STUDENT WELLBEING
AWARENESS TEAM

This student team promotes health and wellbeing through awareness and education, hosting events and offering support at The Bubble. It's a space to meet friends, get advice, enjoy free tea or coffee, and use the kitchen facilities.

STUDENT LEARNING

Student Learning offers free workshops, resources, and support to help international students improve communication, writing, and study skills.

INTERNATIONAL
STUDENT SUPPORT

New Zealand's International Student Wellbeing Strategy ensures a safe and welcoming study environment. At Victoria University of Wellington, Wellington University International offers personal, academic, and cultural support for international students, including insurance help, academic monitoring, orientation, and events.

www.wgtn.ac.nz/students/support/international

ORIENTATION

The International Orientation session, held at the start of each trimester and compulsory for international students, provides valuable tips on services, university policies, visas, insurance, campus tours, and city tours to help you settle into your new student life.

INTERNATIONAL BUDDY
PROGRAMME

You will be assigned a buddy to help you adjust to student life in Wellington and join buddy events throughout the year to meet new friends and have fun.

LEARNER
SUCCESS

Support is provided from the moment you contact us, to enrolling in a course and throughout your studies. We are here to offer you help, both in person and online, so that your student life is happy and rewarding.

LEARNER SUCCESS TEAM

You can visit our friendly Learner Success Team in person or email them for assistance with practical and personal challenges.

E. learnersuccess@up.education
24/7 Emergency Phone: +64 21 597 135



“The Learner Success Team monitors the attendance, wellbeing and academic progress of every student, and is ready to step in and provide support when necessary. Our goal is to work with students to make sure that every student has the best chance of being successful, having a great experience and progressing to Victoria University of Wellington.

We work closely with internal teams (e.g. academic, administrative) and external agencies (e.g. university partner, counselling services) to make sure that students are well-supported and have the best tools available to meet their needs.”



Katie Gao
Learner Success Team Lead
UP International College
New Zealand

ADMINISTRATIVE
SERVICE SUPPORT

E. adminservices@up.education

VISA CHECKING AND
MONITORING

The Administrative Services Team is responsible for checking and monitoring the visa status of our students. They will send reminders to students whose visas are about to expire, communicate with Immigration New Zealand when there are errors on the visas.

MEDICAL AND TRAVEL
INSURANCE

The Education (Pastoral Care of Tertiary and International Learners) Code of Practice 2021 requires all international students studying in New Zealand to have appropriate health and travel insurance during their period of study.

Allianz Partners is our preferred insurance provider. Enrolled international students will be charged Allianz's Studentsafe Inbound University insurance premium when enrolment is completed. You must pay this fee unless the University approves the use of an alternative insurance provider.

You must have approved insurance for the duration of your study and covering the duration of their visa or until they depart New Zealand, whichever comes first.

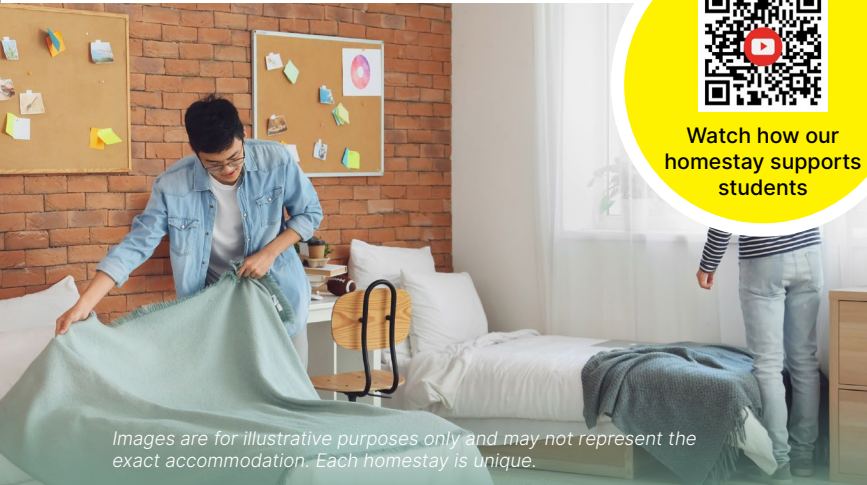
Note: Your student ID number is also your insurance policy number. You are not automatically covered for pre-existing medical conditions. However, cover can be arranged in certain circumstances on application to Allianz before your programme starts.

ACCOMMODATION

International students may choose to live with their parent(s) or a designated caregiver. To get the most out of experiencing life in New Zealand, you are encouraged to live with a local homestay family.



Watch how our
homestay supports
students



Images are for illustrative purposes only and may not represent the exact accommodation. Each homestay is unique.

ACCOMMODATION
HOMESTAY

Available to all students, homestay is a great way of experiencing New Zealand culture and practising your English every day.

You will have your own room with a bed, desk, lamp and wifi, and all meals are included for full-board homestay option. Laundry is also included.

- All homestays are thoroughly checked - the family is interviewed and the home inspected.
- All homestay providers sign a contract agreeing to rules and standards and undergo a vetting procedure by New Zealand Police.
- All students under 18 are visited in their accommodation quarterly by authorised accommodation assessors.
- All payments to the homestay provider are made via the UP Education Student Fees Trust.
- A 24-hour call centre number is provided in case of emergency.

OTHER
ACCOMMODATION
OPTIONS

You could also choose to:

- Live with your parents
- Live with a designated caregiver (relative or family friend)
- Live in Victoria University of Wellington Halls of Residence accommodation. Please note that this only applies to student who are over 18 years old and that you must book independently through the website stating that you are a Foundation Studies Programme student:

www.wgtn.ac.nz/accommodation

You should also do so as early as possible as capacity is limited.

- Live in the student apartments (for students 18 and over only - this is the responsibility of the student or their parent/guardian or agent to arrange).

If you are under 18 at the start of your course, your accommodation arrangements must be approved by us.



ACADEMIC ENTRY REQUIREMENTS

Learn more about entry requirements



International Qualifications	Qualification	Standard (12 months)	Fast-track (8-9 months)	Accelerated (6 months)
Global Assessment Certificate - GAC	Level 2	2.6	2.6	3
International Baculureate - IB^	First year of IB diploma	Grade 4 in 2 relevant subjects	Grade 4 in 3 relevant subjects	Grade 4 in 4 relevant subjects
Cambridge International Examinations O level/IGCSE/GCSE^ (forecast / prelim can also be accepted)		1 C grades and 3 D grades in four CIE official subjects.	2C and 2Ds in four CIE official subjects.	1B and 3Cs in four CIE official subjects
Cambridge International Examinations A level^		40 UCAS points. Local language in AS Level is not accepted.	40 UCAS points. Local language in AS Level is not accepted.	48 UCAS points. Local language in AS Level is not accepted.
Country specific qualifications (Scan the QR code to find out more other countries)				
	Qualification	Standard (12 months)	Fast-track (8-9 months)	Accelerated (6 months)
New Zealand^	NCEA	30 credits at NCEA from mixed of level 2 or above. With no fewer than 6 credits in each of subjects (combined credits from related subjects)	30 credits at NCEA from mixed of level 2 or above. With no fewer than 6 credits in each of subjects (combined credits from related subjects)	34 credits at NCEA from mixed of level 2 or above. With no fewer than 6 credits in each of subjects (combined credits from related subjects)
		i.e., math combined credits from related subjects would be stastics, calculus and math etc	i.e., math combined credits from related subjects would be stastics, calculus and math etc	i.e., math combined credits from related subjects would be stastics, calculus and math etc
China <i>Note that GPA will be based on the average of all subjects for the study period of high school</i>	Senior High School and Vocational - Year 2	60%	65%	70%
	Senior High School and Vocational - Year 3		60%	65%
South Korea	High school certificate Year 2	55% or Rank 8	60% or rank 7	65% or Rank 7.0
	Korean High school graduation equivalency exam (GED)			60%
Country specific qualifications (Scan the QR code to find out more other countries)				
	Qualification	Foundation Connect (6 months)		Pathways Link Programme (12 months)
New Zealand	NCEA	35 credits at level 1 with no fewer than 10 credits in each of 3 subjects including maths		Completion of Year 10 with a good school report, including satisfactory attendance (90%) and teacher comments. This assessment will be conducted by the Head of College
China	Senior Highschool	Senior secondary year 1: 70%		-
	Middle School	-		Completion of Middle School with Year 3 at 70%, or an average of 70% across all three years
South Korea	High School	High school certificate year 1: 70%		-
	Middle School	-		Completion of Middle School
	GEE	-		70% in the Middle School GEE

^Teachers' comments and attendance rate are considered to determine entry. An interview is applicable if studied in New Zealand.
This information is to be used as a guide only to determine entrance. UP Education reserves the right to change the requirements at any time without prior notice.

ENGLISH LANGUAGE REQUIREMENTS

Programme option	IELTS (academic)
Accelerated	6.0 and no band less than 5.0
Fast-track	5.5 and no band less than 5.0
Standard	5.0 and no band less than 4.5
Foundation Connect	4.5 and no band less than 4.0
Pathways Link	4.5 and no band less than 4.0

All students need to provide evidence of their English proficiency upon application.

- If you are an international applicant and your first language is not English, you will need to provide satisfactory evidence of your English proficiency.
- English is considered the first language of citizens of Canada, Ireland, Singapore, the United Kingdom and the United States of America.
- If you are a domestic applicant and your first language is not English, you will be asked to provide evidence of your competence in written and spoken English.

UP ENGLISH LANGUAGE TEST

The UP English Language Test (UPELT) has been developed to provide prospective students with an opportunity to quickly obtain an English language score prior to enrolment into a programme of their choice.

The test is facilitated online by highly qualified and experienced staff. It consists of computer-based, hand-written, and examiner-led tasks. Test description and instructions for test preparation are made available to all prospective candidates in advance, and a practice test is provided. Measures are taken to ensure the integrity of the test.

The UPELT is facilitated every Wednesday afternoon (1pm NZ Standard Time). Bookings can be arranged through the UP Admissions Team, admissions@up.education.



TEST SUMMARY

Part	Tasks	Time (Online)
Reading	3 short passages (approx. 300-400 words each) from: <ul style="list-style-type: none">• a textbook chapter or report• an academic article or essay• an academic abstract	45 minutes
Listening	2 tracks: <ul style="list-style-type: none">• a conversation in an academic setting• a part of a lecture	20 minutes (Plus time to record answers)
Writing	1 essay, 220-250 words <ul style="list-style-type: none">• problem and solution• cause and effect• advantage and disadvantages	40 minutes (Plus time to upload the essay)
Speaking	2 tasks led by an examiner: <ul style="list-style-type: none">• a conversation on familiar topics• a discussion of a topical issue	10 minutes (Plus time for preparation)

One day before the test, candidates will be sent:

- information about the UPELT and technical requirements
- the test security procedure
- instructions on how to set up the room and desk for the test
- demonstration of how to use two devices with cameras during the test
- login instructions
- a practice test
- a Microsoft Teams link for joining the test

Learn more about UPELT



PROGRAMME OPTIONS AND FEES

Learn more about
programme options
and fees



	Foundation Studies			Foundation Connect*	Pathways Link*
Programme type	Accelerated	Fast-track	Standard	Progression to Foundation	Progression to Foundation
Duration	6 months (2 terms)	8-9 months (3 terms)	12 months (4 terms)	6 months (2 terms)	12 months (4 terms)
Tuition fees	\$20,500 NZD	\$25,500 NZD	\$32,800 NZD	\$17,650 NZD	\$33,750 NZD
Resource fee	\$1,000 NZD	\$1,000 NZD	\$1,000 NZD	\$1,320 NZD	\$2,200 NZD
Enrolment fee	\$500 NZD	\$500 NZD	\$500 NZD	\$500 NZD	\$500 NZD
Exam fee	\$450 NZD	\$450 NZD	\$450 NZD	\$450 NZD	-
Intake dates (incl. Orientation)	28 Jan, 22 Apr, 14 Jul, 29 Sep	28 Jan, 22 Apr, 14 Jul, 29 Sep	28 Jan, 22 Apr, 14 Jul, 29 Sep	28 Jan, 22 Apr, 14 Jul, 29 Sep	28 Jan, 14 July

*Students starting with Foundation Connect / Pathways Link Programme will pay the Resource, Enrolment, and Exam fees once and will not be charged again upon progression to Foundation.

SCHOLARSHIPS

Learn more about
scholarships



FOUNDATION CONNECT PROGRESSION SCHOLARSHIP

Student who successfully progress from Foundation Connect programme to Standard Foundation programme will be awarded a scholarship if they achieve top results. The scholarship will be awarded depending on their final grades.

INTERNATIONAL EXCELLENCE SCHOLARSHIP

This scholarship is available for the Foundation programme and is awarded to students who demonstrate exceptional academic performance in their previous studies.

If you are interested in applying, please enquire with your agent or Regional Representative about the next steps.

PROGRESSION SCHOLARSHIP

This scholarship, exclusive to UP Foundation Studies students, is awarded towards first-year tuition fees at Victoria University of Wellington. Eligibility is assessed upon program completion. Scan the QR code for more information on eligibility.

PATHWAYS LINK SCHOLARSHIP

The scholarship is available for the students who apply and are accepted into the the Pathways Link Programme. Upon successful progression to Foundation Studies Programme, there will be scholarships available.

ACCOMMODATION FEES

Homestay	NZD
Homestay Placement fee (one-off)*	\$350
Homestay Replacement fee (one-off)**	\$250
Standard Homestay - Full board***	\$440/week
Designated caregiver (DCG) - Under 18 only	NZD
DCG Assessment fee	\$350
DCG Reassessment fee (change DCG)+	\$250
Under 18 accommodation guarantee and service fees^	NZD
Per year	\$1,000
Per term	\$250
Additional fees	NZD
Urgent Booking fee – Full board (one off) applicable for bookings received within 7 days of arrival	\$440
Short-stay (less than 1 week) / Emergency homestay - Full board	\$130/night
Homestay Retainer^^	\$250/week
Airport pick-up	NZD
Airport transfer (Pick-up/drop-off) (one way per person)	\$150
Airport transfer - no show	\$80
Transfer of additional passenger	\$80
Transfer of additional luggage/oversized luggage	\$30/item
Airport check-in assistant and transfer for Under 18 learners	\$50

INSURANCE

Studentsafe Inbound	NZD
Medical and travel insurance (12 months)#	\$855

Please note that Accommodation Placement Fee, Designated Caregiver Assessment Fee or Airport pick up fee are non-refundable once the arrangement is confirmed.

*If UP Education coordinates student accommodation.

**Fee charged when student requests a change of homestay for reasons deemed unacceptable, or if student frequently changes homestays (fee charged at discretion of the Accommodation team).

***Full-board – 3 meals a day are provided

+Fee charged when change to a new Designated Caregiver

^Allows for homestays for students under 18 to be checked once per term to ensure the Education Code of Practice requirements are being met.

^^Fee applies when students go away for more than seven days (6 nights) and want to keep the Homestay room.

#International students must have comprehensive medical and travel insurance while in New Zealand. Enrolled international students will be charged Allianz's Studentsafe Inbound University insurance premium when enrolment is completed. The final cost of insurance will depend on the length of requested insurance cover period.

HOW TO APPLY

STEP
1

APPLICATION

Visit Enroller, our online enrolment portal, where you will be able to set up your account and manage the entire enrolment process from application through to arrival.

enroller.app/up-education-university-partnerships/enrolment-application

STEP
2

ACCEPTANCE

- Open the unconditional offer that you received from admissions@up.education.
- Read through the electronic Confirmation of Enrolment (eCoE) Enrolment Acceptance Form and Summary of Terms Implied by Statute Sign and initial at the requested sessions on the offer and send them back to admissions@up.education.

STEP
3

PAYMENT

- Open browser on your computer/laptop/mobile/tablet and go to upic.flywire.com.
- Change the language if you need by clicking the globe icon on the up-left side of the page.
- Choose the country that you are paying from and type in the NZD amount shown in the invoice on your unconditional offer.
- Follow the on-screen instructions to complete the payment.

STEP
4

VISA APPLICATION

Apply for your student visa online with Immigration New Zealand at

www.immigration.govt.nz/new-zealand-visas/preparing-a-visa-application

STEP
5

ENROLMENT

- Once your payment is received, you will receive an email from admissions@up.education with your receipt.
- Please keep an eye in your email inbox, including spam and trash box, for emails from admins@up.education as they include important information such as orientation schedules, subject selection links and deadlines. Read the emails carefully and reply to their emails with requested information to complete your enrolment process.

APPLY NOW



If you have any questions about the application process, contact the Administrative Service Support Team at admins@up.education



TALK TO OUR STUDENT

The Victoria University of Wellington is a great place to study. But don't just take our word for it! Our student ambassador is happy to help you with any questions about life at the Victoria University of Wellington or studying in New Zealand.



NEHARA

Kia ora from Wellington! My name is Nehara Pandey, and I'm a student at Victoria University of Wellington. I major in Marine Biology and Environmental Studies and mostly study on the Kelburn campus. I love exploring new places and meeting new people! Some of my hobbies include reading, swimming, SCUBA diving, watching anime, and gardening. Feel free to contact me for a chat about anything. I'm here to help in any way I can :)



The Education (Pastoral Care of Tertiary and International Learners) Code of Practice 2021




UP Education, and its schools, is a signatory to The Education (Pastoral Care of Tertiary and International Learners) Code of Practice 2021. Published by the New Zealand Ministry of Education and administered by the New Zealand Qualifications Authority (NZQA), the Code is designed to ensure international students are well informed, safe and properly cared for.

Visit: nzqa.govt.nz/the-code

UP Education partners with leading universities in New Zealand and Australia to provide learning pathways to international students, equipping them with the knowledge, skills and confidence to excel at English language universities.

Every effort was made to present accurate information in this publication at the time of printing.
(9 May 2025)

UP Education reserves the right to change information without notice where this is considered necessary or desirable.

 /upeducationnz
 /@up.education
 /@UPEducationNZ



All enquiries and applications to:

UP International College New Zealand
345 Queen St
Auckland
New Zealand

P +64 9 558 3536
E international@up.education
W wgtn.up.education
After Hour Emergency Phone No +64 (0) 21 597 135



VICTORIA UNIVERSITY OF
WELLINGTON
TE HERENGA WAKA
NEW ZEALAND