



**25**  
YEARS  
OF PARTNERSHIP

**UP**  
EDUCATION



# University of Auckland Certificate in Foundation Studies Prospectus



**International College**

Kāretī ki te Ao



**No.1**  
New Zealand  
University<sup>1</sup>



**Top 65**  
in QS world  
rankings<sup>1</sup>



**Top 50**  
in the world for  
10 subjects<sup>2</sup>

DELIVERED BY UP EDUCATION



# Learn and grow in New Zealand

## Quick facts

**NZ Population:**  
5,338,900\*

**Largest city:**  
Auckland – population  
1,739,300\*

**Capital City:**  
Wellington

**Official languages:**  
English, Māori,  
New Zealand Sign Language

**Currency:**  
New Zealand dollar

**Climate:**  
Summer - Ave. 24°C (75°F)  
Winter - Ave. 16°C (60°F)

**Warmest months:**  
January, February

**Coldest months:**  
July, August

\*Statistics New Zealand, May 2024.



**1st**  
safest study  
destination  
AECC Insights 2024



**4th**  
most peaceful  
country globally  
Global peace index score 2024



**Top 3%**  
universities  
in the world  
QS World University Rankings 2024



**9th**  
longest  
coastline



**1st**  
work-life  
balance globally  
Global employment company, Remote



**30%**  
of the area is  
national parks

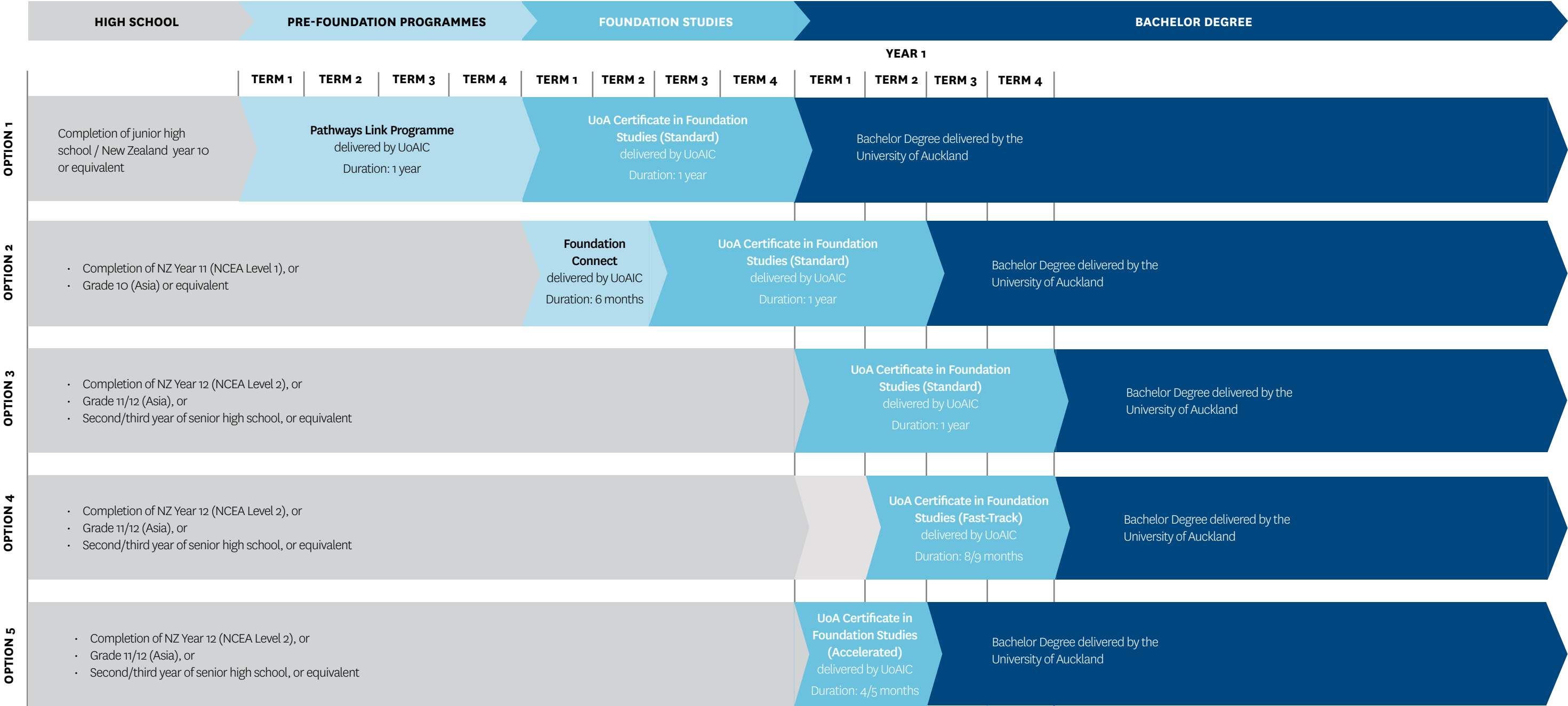


# University of Auckland International College Pathway Programme Overview

## The programmes we offer

- Pathways Link Programme
- Foundation Connect\*
- University of Auckland Certificate in Foundation Studies (Standard) (Level 3)
- University of Auckland Certificate in Foundation Studies (Fast-Track) (Level 3)
- University of Auckland Certificate in Foundation Studies (Accelerated) (Level 3)

\*The programme is marketed as Foundation Connect and the programme name is registered as "Intensive General English Course" at NZQA.







# Nau mai, haere mai

A warm welcome to Waipapa Taumata Rau, the University of Auckland, New Zealand’s highest-ranked<sup>1</sup> and largest higher education institution.

We proudly welcome students, academic teachers, and researchers from around the world to our University. We offer a multicultural learning environment built on a partnership with our local Māori tribe and strong valuesbased commitments to supporting members of our community.

Across three dynamic city campuses, students have the opportunity to study and research a comprehensive range of disciplines, some of which are ranked in the top 50 in the world<sup>2</sup>.

We promote transdisciplinary study and research with our University the research and teaching powerhouse behind the country’s growing MedTech and Space sectors.

We celebrate and support excellence at the University of Auckland, offering all students hands-on experiences through our Centre for Innovation and Entrepreneurship. The University is ranked 1st in New Zealand for Graduate Employment.<sup>3</sup>

The University of Auckland’s long commitment to sustainability sees us deploy sustainability principles across all that we do – through our curriculum, research, and operations. We are proud that these achievements have been recognised internationally<sup>4</sup>, serving as a key decision point for students.

Travelling to New Zealand is an exciting opportunity. Auckland is a diverse and welcoming city with easy access to nature.

We look forward to you joining us and encourage you to explore the scholarship and funding options we offer international students to smooth your journey to Auckland.

Mā te wā – goodbye for now, see you soon!



**DAWN FRESHWATER**  
Ihorangi | Vice-Chancellor  
Waipapa Taumata Rau | University of Auckland

1. We are ranked 65th in the world by the QS World University Rankings 2025.  
2. QS University Subject Rankings 2024.  
3. QS Graduate Employability.  
4. We are ranked 1st in Oceania and 5th in the world for sustainability by the QS World University Rankings 2024, and 13th globally in the Times Higher Education Impact Rankings for Sustainability 2024.



Cover attributions  
1. QS World University Rankings 2025  
2. QS World University Rankings by Subject 2024

## Contents

Aotearoa New Zealand	8	Pathway to University of Auckland	20	Administrative Service Support & Accommodation	29
Study and thrive in Auckland	10	The University of Auckland Certificate in Foundation Studies	22	Entry requirements	30
About University of Auckland	13	Foundation Connect	24	UP English Language Test	31
Degree options	14	Pathways Link Programme	25	Programme options and fees & Scholarships	32
Most in-demand degrees	15	Life on campus	26	Accommodation fees	33
Degree progression requirements for University of Auckland	16	Learner Success Team	28	How to apply	34
The University of Auckland International College	19			Talk to our students	35



# Aotearoa New Zealand, a great place to study, live and work

New Zealand is world-famous for its friendly people, spectacular landscape and relaxed lifestyle. Discover what it's like to be a student here. Learn about the different types of accommodation. Explore our cities and regions, and find out about the cost of living.

## Feel safe and secure

New Zealand is recognised as one of the most peaceful, least-corrupt countries in the world, giving you a sense of security and confidence while you concentrate on your studies or as you explore our beautiful country.

## World-class education

All of New Zealand's eight universities rank in the top 3% globally. Students are encouraged to solve problems, collaborate, and innovate.

## Work-life balanced lifestyle

New Zealand is known for its strong culture of family and community, along with a healthy balance between career and personal life. Companies often offer flexible working hours and generous holiday leave, allowing employees to pursue interests outside of work.



## Post-study work opportunities

Take your next step after graduation with a post-study work visa<sup>1</sup>. Eligible international students may remain in New Zealand for up to three years to gain relevant work experience and transferable skills.



## Globally-recognised qualifications

A New Zealand qualification is a valuable asset that can give you a head start in the international job market. It is recognised by over 50 countries. These include the United States, the United Kingdom and Australia.



## Embracing all peoples

New Zealanders, or Kiwis, embrace people from diverse backgrounds with warmth and respect. Our friendly culture, our rich history, our laidback, open-mindedness and our diverse traditions respect everyone's rights, beliefs, and choices.



## A high standard of living

New Zealand boasts a high standard of living, with excellent education, healthcare, transport, and infrastructure. Our economy is strong, and our political system is stable. The country's transparent legal and governmental systems safeguard the rights of both citizens and visitors.



*"There was something profoundly different about New Zealand compared with the rest of the world, and it was something the world could learn from.*

*It's a certain sense of duty to each other, that you're part of the team, that you will sacrifice for each other. That empathy, that love and respect, whatever it is that binds you together - we hope to be as much a part of that as we can be."*

**James Cameron**

Hollywood Director of the movie, Avatar

<sup>1</sup> For more information, please visit <https://www.immigration.govt.nz/new-zealand-visas/apply-for-a-visa/about-visa/post-study-work-visa>







**Top 3**  
in the world for  
quality of living  
Mercer Quality of Living Rankings 2023



Auckland is home to  
**180 cultures**  
Statistics New Zealand



**41%**  
of Aucklanders are  
born overseas  
Statistics New Zealand, 2018 Census



**Top 10**  
most Liveable City  
in the world  
Economist Intelligence Unit (EIU)  
Global Liveability Index 2023



**Top 25**  
global student-  
friendly cities  
QS Best Student Cities 2025

# Study and thrive in Auckland

Learn more about  
living in Auckland



Located in the heart of Auckland, our campus offers the best of a vibrant, energetic city lifestyle where you can find nature just down road.



## Excitingly multicultural

Auckland is a true representation of New Zealand, but with a unique mix of cultures that gives the city a global feel. Our diverse cultural blend is seen in our public spaces, restaurants, and events. There are also many active expat communities, offering you the chance to meet, socialise, and connect with people from various countries.



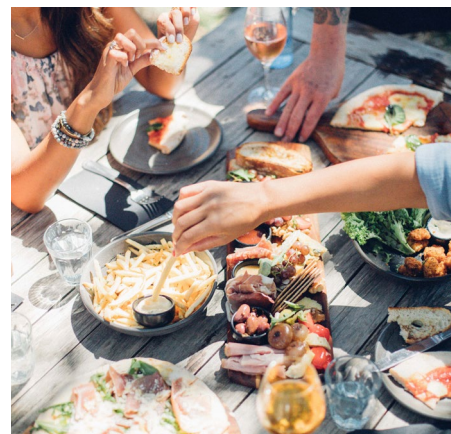
## Immerse yourself in Māori and Pacific culture

From a traditional Māori pōwhiri (welcome) to festivals, ceremonies and language immersion, you can engage with Māori and Pacific culture in daily life. These are unique opportunities that can broaden your perspective beyond the classroom.



## Surrounded by nature

Whether you're looking for an adventure or a relaxed weekend, you're never far from a beach or a glimpse of the harbour with its many islands to explore. Nestled around the inner-city campuses are urban greenspaces for a quick breather, while forests and waterfalls await just at the city's edges.



## Food from around the globe

Auckland has an impressive variety of restaurants, cafes and bars to suit every taste and budget. Enjoy a meal at some of Auckland's famous "eat streets" which host a truly global range of cuisines, including, Chinese, Italian, Vietnamese, French, Spanish, Japanese, Lebanese and Thai, just to name a few.

Auckland is the commercial and  
business centre of New Zealand.

AIR NEW ZEALAND



vodafone

Microsoft

pwc

TESLA

KPMG

EY

SAMSUNG

Deloitte.

Google



Study in the  
heart of everything

University of Auckland City Campus  
10-minute walk

Central City Library  
5-minute walk

Auckland Art Gallery  
7-minute walk

YMCA Sports and Recreation Centre  
10-minute walk

Number of bus stops within  
500 meters of campus  
8 bus stops

Auckland Airport  
25-minute by car



Take a virtual  
campus tour



THE UNIVERSITY OF AUCKLAND  
INTERNATIONAL COLLEGE

THE UNIVERSITY OF AUCKLAND  
CITY CAMPUS





**No 1**  
In New Zealand and  
**Top 100**  
worldwide for  
**graduate employability<sup>1</sup>**



**Top 50**  
**in the world**  
for 10 subjects<sup>2</sup>



**33% of the top-rated  
researchers in the country**  
New Zealand's largest research organisation



**No 5 globally**  
for Sustainability<sup>3</sup>



**New Zealand's leading  
innovation and  
entrepreneurship centre<sup>4</sup>**



**8,000+**  
international students  
**from 100+**  
**different countries**



# About University of Auckland

## Global, Impactful, and Future-Focused Research

Researchers at the University of Auckland collaborate globally to address some of the world's most compelling issues and opportunities. All students benefit from the global perspectives and the opportunity to make a positive impact in the world.

## Build your global career

Study at New Zealand's highest-ranked university and obtain the skills and qualifications in demand with global employers. Learn new ways of thinking and enhance your future career while gaining a world-class education.

## World Top 5 for Sustainability<sup>3</sup>

The University of Auckland is ranked 1st in Oceania and 5th globally for sustainability<sup>3</sup>. This reflects its commitment to the Sustainability Strategy and Net Zero Carbon Strategy, supporting the United Nations' Sustainable Development Goals.

## Innovation Made Real

As New Zealand's most innovative university<sup>4</sup>, the University of Auckland is renowned for entrepreneurship education. The Business School's Centre for Innovation and Entrepreneurship (CIE) offers free co-curricular learning opportunities and has won 11 international awards since 2020. It provides programmes like Velocity and facilities at its innovation hubs and makerspaces.

<sup>1</sup>. QS Graduate Employability Rankings 2022

<sup>2</sup>. QS World University Rankings by Subject 2024

<sup>3</sup>. QS Sustainability Rankings 2024

<sup>4</sup>. 12 International awards for innovation and entrepreneurship since 2020, [cie.auckland.ac.nz/awards](https://cie.auckland.ac.nz/awards)



# Degree options

## Transition to the University

The University of Auckland offers a wide range of undergraduate courses for you to choose from for your packaged offer. Our Learner Success Team is available to offer their expertise if you want to learn more about your chosen undergraduate degree.

There will be regular opportunities for you to get a glimpse of university life through campus tours. You will also hear from staff, current students and alumni of the University so you get early insights into your faculty and degree options.

Towards the end of your Foundation course, there will be a transition session conducted by the International College and university. The session will cover the next steps you should take to accept your degree offer, and advice to stay on track with your progression plan to the University.

Faculty	Programme
Arts	Bachelor of Arts (BA)
	Bachelor of Communication (BC)
	Bachelor of Global Studies (BGlobalSt)
Business	Bachelor of Commerce (BCom)
	Bachelor of Property (BProp)
Creative Arts and Industries	Bachelor of Architectural Studies (BAS)
	Bachelor of Dance Studies (BDanceSt)
	Bachelor of Design (BDes)
	Bachelor of Fine Arts (BFA)
	Bachelor of Music (BMus) – Creative Practice in; Classical, Jazz, or Popular Music
	Bachelor of Music (BMus) – Music Studies, Composition
	Bachelor of Urban Planning (Honours) (BUrbPlan (Hons))
Education and Social Work	Bachelor of Education (Teaching) (BE (Tchg))
	Bachelor of Education (Teaching English to Speakers of Other Languages) (BE TESOL)
	Bachelor of Sport, Health & Physical Education (BSportHPE)
	Bachelor of Early Childhood Studies (BECSt)
	Bachelor of Social Justice Studies (BSJS) [pending CUAP approval]
Engineering	Bachelor of Engineering (Honours) (BE (Hons))
Law	Bachelor of Laws Part I (LLB (Part I))
Medical and Health Sciences	Bachelor of Health Sciences (BHSc)
	Bachelor of Medicine and Bachelor of Surgery (MBChB)
	Bachelor of Nursing (BNurs)
	Bachelor of Optometry (BOptom)
	Bachelor of Pharmacy (BPharm)
	Bachelor of Medical Imaging (Hons) (BMedImagH)
Science	Bachelor of Science (BSc) – Biomedical Science
	Bachelor of Science (BSc) – Food Science & Nutrition
	Bachelor of Science (BSc) – other majors
	Bachelor of Advanced Science (Honours) (BAdvSci(Hons)) – All specialisations
Conjoint Degree Programmes	Conjoint Degrees (without Engineering, Advanced Science, Health Sciences, or Nursing)
	Conjoint Degrees (with Health Sciences)
	Conjoint Degrees (with Engineering)

10 subjects ranked Top 50 in the world\*



\*QS World University Rankings by Subject 2024

# Most in-demand degrees

### Bachelor of Science (BSc)

It's your opportunity to create a solid foundation for your study in the Earth, Chemical, Computational, Mathematical and Physical Sciences.

- 9 Science subjects rank in the top 100 worldwide
- Number 1 in New Zealand for graduate employability
- The Faculty of Science is the largest science faculty in New Zealand
- Choose from 25 subjects to personalise your degree
- The Bachelor of Science (BSc) programme allows you to incorporate different areas of interest and expertise.

### Bachelor of Commerce (BCom)

Pursue a flexible business degree and gain strong communication, teamwork and problem-solving skills.

- Choice of 12 majors, with a wide range of conjoint options available.
- Professional skills development that will enhance your employability.
- Cutting-edge specialist learning spaces, including the BNZ Financial Trading Room and Vodafone 5G Lab.

### Bachelor of Engineering (Honours)(BE(Hons))

Blend theory and practice to contribute to an technologically advanced, sustainable world.

- Opportunities to work on real-world projects.
- Access to world-class research institutes, equipment and study facilities.
- Industry placements to prepare you for the workforce.
- Internationally recognised degree specialisations accredited by Engineering New Zealand

### Bachelor of Pharmacy (BPharm)

BPharm is designed to provide students with comprehensive and practical training for a career in pharmacy.

- An integrated programme developed in partnership with leading pharmacists.
- Great preparation for professional life at the leading edge of pharmacy practice.
- The chance to join a dynamic healthcare environment in which pharmacists are delivering new services in collaboration with other healthcare providers.

### Bachelor of Medicine and Bachelor of Surgery (MBChB)

Equip yourself with the medical, clinical and research skills for pursuing a vocation in any field of medicine.

- Strong emphasis on medical sciences, clinical, personal, professional, communication skills, and population health.
- A faculty with an international reputation for research and innovation.
- Unrivalled access to clinical environments, thanks to our close relationship with a range of district health boards and general practices.



# Degree progression requirements for University of Auckland

Minimum academic and English language requirements for guaranteed entrance into undergraduate study from the University of Auckland Certificate in Foundation Studies. Effective for students applying for entry to the University of Auckland in 2025.

Faculty	Programme	GPA <sup>1</sup>	English	Semester intake	Additional requirements	Duration (years)
Arts	Bachelor of Arts (BA)	2.4	65% (B- grade) in English (EAP) <sup>2</sup>	Mar, Jul		3
	Bachelor of Communication (BC)	2.5	65% (B- grade) in English (EAP) <sup>2</sup>	Mar		3
	Bachelor of Global Studies (BGlobalSt)	3.0	65% (B- grade) in English (EAP) <sup>2</sup>	Mar		3
	Bachelor of Commerce (BCom)	2.5	65% (B- grade) in English (EAP) <sup>2</sup>	Mar, Jul		3
	Bachelor of Property (BProp)	2.5	65% (B- grade) in English (EAP) <sup>2</sup>	Mar, Jul		3
	Bachelor of Architectural Studies (BAS)	4.7	65% (B- grade) in English (EAP) <sup>2</sup>	Mar	By selection only. (Subject to the qualitative evaluation of a portfolio of creative work and written statement). <sup>4</sup>	3
Business	Bachelor of Commerce (BCom)	2.5	65% (B- grade) in English (EAP) <sup>2</sup>	Mar, Jul		3
	Bachelor of Property (BProp)	2.5	65% (B- grade) in English (EAP) <sup>2</sup>	Mar, Jul		3
	Bachelor of Architectural Studies (BAS)	4.7	65% (B- grade) in English (EAP) <sup>2</sup>	Mar	By selection only. (Subject to the qualitative evaluation of a portfolio of creative work and written statement). <sup>4</sup>	3
	Bachelor of Dance Studies (BDanceSt)	2.4	65% (B- grade) in English (EAP) <sup>2</sup>	Mar	By selection only. (Subject to the qualitative evaluation of an audition/interview which may contain one or more recorded/live elements). <sup>4</sup>	3
	Bachelor of Design (BDes)	3.0	65% (B- grade) in English (EAP) <sup>2</sup>	Mar		3
	Bachelor of Fine Arts (BFA)	2.4	65% (B- grade) in English (EAP) <sup>2</sup>	Mar		4
Creative Arts and Industries	Bachelor of Music (BMus) – Creative Practice in; Classical, Jazz, or Popular Music	2.4	65% (B- grade) in English (EAP) <sup>2</sup>	Mar	By selection only. Subject to the qualitative evaluation of an audition/composition portfolio. Details of the portfolio requirements are given in depth on the University website. <sup>4</sup>	3
	Bachelor of Music (BMus) – Music Studies, Composition	2.4	65% (B- grade) in English (EAP) <sup>2</sup>	Mar		3
	Bachelor of Urban Planning (Honours) (BurbPlan (Hons))	3.0	65% (B- grade) in English (EAP) <sup>2</sup>	Mar		4
	Bachelor of Education (Teaching) (BE (Tchg))	2.4	IELTS 7.0 overall, no band below 7.0.	Mar, Jul (Jul intake subject to availability) <sup>5</sup>	By selection only. (Subject to a satisfactory interview, police check, safety checks and referees' reports. You will also be required to sit literacy and numeracy assessment). <sup>4</sup>	3
	Bachelor of Education (Teaching English to Speakers of Other Languages) (BED TESOL)	2.4	65% (B- grade) in English (EAP) <sup>2</sup>	Mar, Jul	By selection only. (Subject to a satisfactory interview, police checks, safety checks and referees' reports). <sup>4</sup>	3
	Bachelor of Sport, Health & Physical Education (BSportHPE)	2.4	65% (B- grade) in English (EAP) <sup>2</sup>	Mar, Jul		3
Education and Social Work	Bachelor of Early Childhood Studies (BECS)	2.4	65% (B- grade) in English (EAP) <sup>2</sup>	Mar, July		3
	Bachelor of Social Justice Studies (BSJS) [pending CUAP approval]	2.4	65% (B- grade) in English (EAP) <sup>2</sup>	Mar		3
	Bachelor of Engineering (Honours) (BE (Hons))	5.0	70% (B grade) in English (EAP) <sup>3</sup>	Mar, July (Jul intake subject to availability)	Calculus and Physics.	4
	Bachelor of Laws Part I (LLB (Part I))	Students must be offered a place in another bachelor's degree either as a concurrent degree or a conjoint degree. Entry will be based on entry requirements for the other bachelor's degree.	Must meet minimum English requirements for other Bachelor's degree.	Mar, Jul	Students will be selected into Part II on the basis of their results in Part I.	4
Engineering	Bachelor of Engineering (Honours) (BE (Hons))	5.0	70% (B grade) in English (EAP) <sup>3</sup>	Mar, July (Jul intake subject to availability)	Calculus and Physics.	4
Law	Bachelor of Laws Part I (LLB (Part I))	Students must be offered a place in another bachelor's degree either as a concurrent degree or a conjoint degree. Entry will be based on entry requirements for the other bachelor's degree.	Must meet minimum English requirements for other Bachelor's degree.	Mar, Jul	Students will be selected into Part II on the basis of their results in Part I.	4

Faculty	Programme	GPA <sup>1</sup>	English	Semester intake	Additional requirements	Duration (years)
Medical and Health Sciences	Bachelor of Health Sciences (BHSc)	5.0	70% (B grade) in English (EAP) <sup>3</sup>	Mar	One of Biology, Chemistry or Physics.	3
	Bachelor of Medicine and Bachelor of Surgery (MBChB)	No direct entry		Mar	No direct entry. Applicants will be selected on the basis of first year results in the BSc (Biomedical Science) or BHSc programme, UCAT score and an interview. <sup>4</sup>	6 <sup>7</sup>
	Bachelor of Nursing (BNurs)	4.0	70% (B grade) in English (EAP) <sup>3</sup>	Mar	One of Biology, Chemistry or Physics. Limited numbers of places available. Selection by interview. <sup>4</sup>	3
	Bachelor of Optometry (BOptom)	No direct entry		Mar	No direct entry. Applicants will be selected on the basis of first year results in the BSc programme, and an interview. <sup>4</sup>	5 <sup>8</sup>
	Bachelor of Pharmacy (BPharm)	No direct entry		Mar	No direct entry. Applicants will be selected on the basis of first year results in the BSc or BHSc programmes, and an interview. <sup>4</sup>	4 <sup>9</sup>
	Bachelor of Medical Imaging (Hons) (BMedImagH)	No direct entry		Mar	No direct entry. Applicants will be selected on the basis of first year results in the BSc programme, and an interview. <sup>4</sup>	4 <sup>10</sup>
Science	Bachelor of Science (BSc) – Biomedical Science	5.0	65% (B- grade) in English (EAP) <sup>2</sup>	Mar	One science subject. <sup>6</sup>	3
	Bachelor of Science (BSc) – Food Science & Nutrition	3.5	65% (B- grade) in English (EAP) <sup>2</sup>	Mar, Jul	One science subject. <sup>6</sup>	3
	Bachelor of Science (BSc) – other majors	3.0	65% (B- grade) in English (EAP) <sup>2</sup>	Mar, Jul	One science subject. <sup>6</sup>	3
	Bachelor of Advanced Science (Honours) (BAdvSci(Hons)) – All specialisations	5.0	70% (B grade) in English (EAP) <sup>3</sup>	Mar, Jul	One science subject. <sup>6</sup>	4
	Conjoint Degree Programmes	3.9	Must meet minimum English requirements for both degrees.	Dependent on faculty	See the additional requirements listed for both degree programmes.	4+ <sup>11</sup>
Conjoint Degree Programmes	Conjoint Degrees (with Engineering, Advanced Science, Health Sciences, or Nursing)	5.0	Must meet minimum English requirements for both degrees.	Dependent on faculty	See the additional requirements listed for both degree programmes.	5+ <sup>11</sup>
	Conjoint Degrees (with Engineering)	6.0	Must meet minimum English requirements for both degrees.	Dependent on faculty	See the additional requirements listed for both degree programmes.	5+ <sup>11</sup>

To be awarded the University of Auckland Certificate in Foundation Studies, students must pass a minimum of four academic subjects and achieve 65% (B- grade) or higher in EAP or 50% in EAP with an IELTS overall score of 6.0 and no bands below 5.5.

Entry to a University of Auckland Bachelor's degree requires completion of the University of Auckland Certificate in Foundation Studies and the required minimum GPA and EAP score as listed above.

- NOTES:**
- GPA includes all subjects taken except English (EAP).
  - If 65% (B- grade) in EAP is not achieved an acceptable alternative is 50% in EAP with a valid IELTS overall score of 6.0 and no bands below 5.5.
  - If 70% (B grade) in EAP is not achieved an acceptable alternative is 50% in EAP with a valid IELTS overall score of 6.5 and no bands below 6.0.
  - Faculties with programmes that specify 'Selection' have additional entry requirements such as a portfolio or interview, and entry is subject to faculty approval. The scores listed are alone not sufficient for entry.
  - The July intake is only available for students enrolling in the Primary specialisation at the City Campus.
  - A minimum of one of the following science subjects is required to be passed: Biology, Calculus, Chemistry, Geography, Physics,Modelling and Statistics.
  - One-year BSc (Biomedical Science) or BHSc, plus five additional years in the MBChB programme if admission is gained.
  - One-year BSc, plus four additional years in the BOptom or programme if admission is gained.
  - One-year BSc or BHSc, plus three additional years in the BPharm programme if admission is gained.
  - One-year BSc plus three additional years in the BMedImag (Hons) programme if admission is gained.
  - Duration of conjoint programmes varies.

The above information is correct as of September 2024 and is subject to change.

Learn more about degree progression requirements







# Welcome

## to the University of Auckland International College - your pathway to New Zealand's Top university

The University of Auckland is all about providing quality educational opportunities to help students tackle future problems – and the University of Auckland International College is no different. Our three programmes (Standard Foundation, Fast-Track, and Accelerate) are tailor-made to meet students where they are at and to provide them with the tools to be successful in their programmes both at UoAIC and at UoA, and into the future.

Year after year, our highly qualified, creative and caring teachers provide excellent learning opportunities to students both onshore and offshore, and students who work hard and seize these opportunities reap the benefit of being admitted into New Zealand's top university. I am incredibly proud of what we have achieved – and the best is yet to come.



**JULIAN LATIMER**  
Principal,  
University of Auckland  
International College



**25**  
YEARS  
OF PARTNERSHIP

**UP**  
EDUCATION

# University of Auckland International College\*

## International College campus

You will work towards your University of Auckland Certificate in Foundation Studies at our International College campus at 345 Queen Street, Auckland. Our designed campus is a space that will enable you to study, make friends and get excited about your future with the University of Auckland.

Orientation Week provides an exciting start to your student journey. Staff and alumni from the University will be present to officially welcome you and your fellow classmates. Hear directly from them about the University, life on campus and the different ways you can get engaged to make the most out of your experience as a University of Auckland student.

## Programme delivery

Partnered with the leading university in New Zealand, the University of Auckland International College has been delivering the Foundation programme for 25 years on behalf of the University of Auckland.

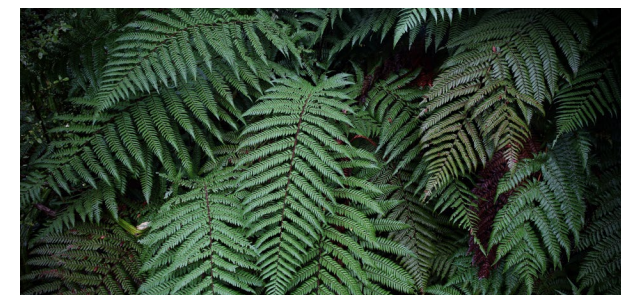
Your teachers will work through materials with you and your classmates. With the help of breakout rooms and other tools, your teachers will give you every opportunity to engage with your classmates and learn. You will practise your English skills in these lessons – skills that are crucial to your success at University.



**90%**  
Student  
satisfaction  
rate

\*The enrolment in the University of Auckland Certificate in Foundation Studies is with the University of Auckland. This programme is delivered by UP International College New Zealand. University of Auckland International College is the trading name of UP International College New Zealand.

Outside of these lessons, you will be given clear instructions to guide you through flexible learning activities. These activities involve a combination of digital tools and other resources to deepen your learning – whenever and wherever you want to learn. You will watch interactive videos, complete online quizzes, read digital texts and more. Your progress will be monitored and you will receive personalised feedback based on your understanding and performance.



## Endorsement from New Zealand Government

The University of Auckland Certificate in Foundation studies, delivered by the University of Auckland International College, is proudly a Licensee of the FernMark Licence Programme, a country of origin trademark programme endorsed and recognised by the New Zealand Government.

It's a symbol people recognise and trust - a trademark that embodies our values of kaitiaki, integrity, ingenuity - the values of our New Zealand Story.

## History of the Silver Fern

The Silver Fern is a long-standing and respected symbol of New Zealand. Since the late 19th century, it has been proudly worn by sports teams and soldiers and used to represent our country globally. Māori used the fern's silver underside to navigate by moonlight, illuminating their path through the forest.

Today, the Silver Fern continues to guide us, just as it has for over 150 years. Supported by the New Zealand Government, key businesses, Tourism New Zealand, and New Zealand Trade and Enterprise, the FernMark is a valued symbol of our country. It represents New Zealand globally and attracts international students to our shores.





# Pathway to the University of Auckland and beyond

## Progress straight to university

Upon successful completion of your programme, you are guaranteed entry to your packaged degree at the University with no further English language evidence required.



## University-level education from day one

Our programmes include the latest content from courses at the University of Auckland, providing you with a university-level education to prepare you for your studies.

## Improve your English before university

Develop your academic reading, writing, speaking, and thinking skills while improving your pronunciation and critical thinking. With enhanced English and learning skills, you will be well-prepared to continue your education at the university.

## Global classrooms

Every year, hundreds of students from countries including China, South Korea, Singapore, Hong Kong, Malaysia, India, Vietnam, Indonesia, Japan, and more progress to the University of Auckland. The preparation received at the College has been crucial to their successful transition to university study.

## Genuine support

Our students thrive in the supportive environment we offer. From academic matters to personal concerns, our academic staff and Learner Success Team are dedicated to providing comprehensive support and resources.

## Prepare for the next step

Our Learner Success Team offers valuable course and progression advice. It's not just about achieving good grades; it's also about receiving the best guidance to help you prepare for the future.

## Expand your professional network

In addition to making friends with fellow students, you'll expand your network to include UoAIC alumni around the world in more than 60 countries.

UoAIC students consistently perform at a higher level than domestic students at UoA in their first year



*"I certainly know from speaking with the UoAIC team and some of my colleagues that University of Auckland International College students who pathway into our undergraduate programmes are really set up to succeed. They understand the environment they're learning in and are academically prepared, setting them up for success. We see that they are high performers, doing very well across a number of different faculties and academic programmes."*

*It's quite an adjustment coming into New Zealand's largest, most comprehensive, and highest-ranked university, which can be overwhelming. I think UoAIC provides that solid foundation to enable them, both in their academic studies and in their whole life."*



VASSO KOUTSOS  
Deputy Director International Marketing and Recruitment  
University of Auckland

*"My passion for architecture keeps me motivated. Participating actively in class and helping peers with difficulties not only solidifies my understanding but also enhances my educational experience."*

## Shanny from Indonesia

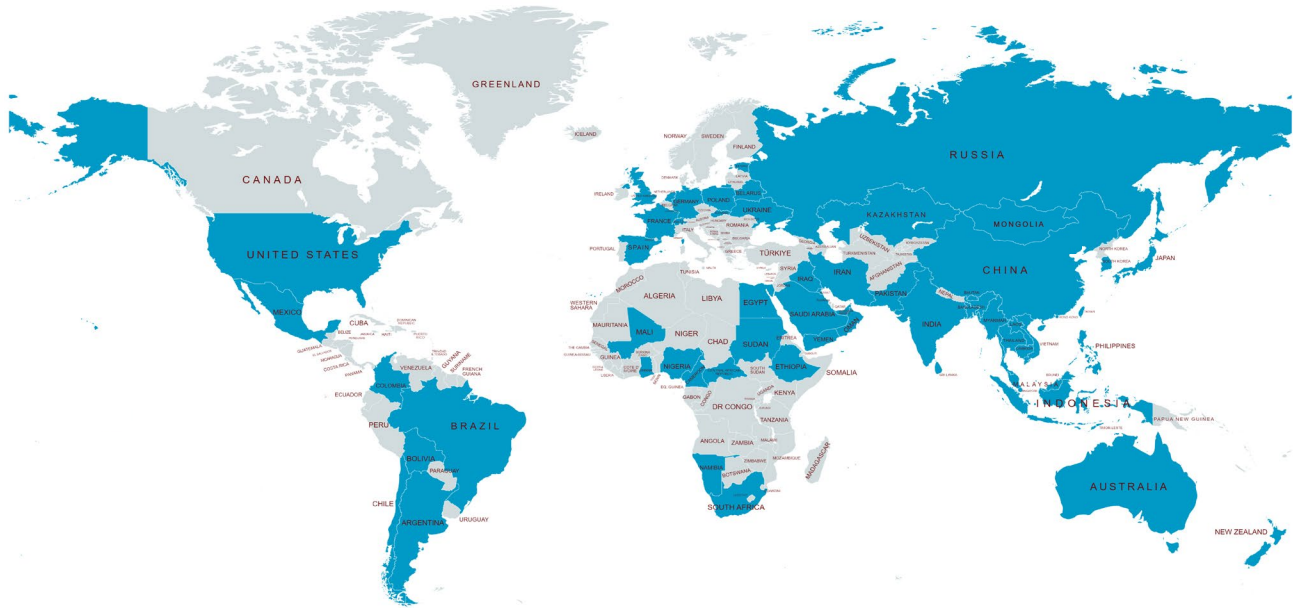
The University of Auckland Certificate in Foundation Studies (Standard)



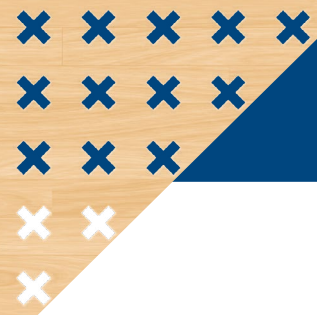
Watch her full story



## Where do our students come from?







86%  
pass rate<sup>1</sup> by  
Semester 2,  
2024

# The University of Auckland Certificate in Foundation Studies\*

## Who is this programme for?

Students who are currently studying at New Zealand secondary school Year 12 (NCEA Level 2), or

- Grade 11/12 (Asia), or
- Second/third year of senior high school, or equivalent

For students who do not meet the requirements above, there is a Foundation Connect option. Refer to the next page.

## Prepare to study at university

- Study the academic subjects you need for your degree programme, in English
- Upskill in academic English
  - Understand lectures clearly
  - Write stronger essays
  - Read written content more effectively
  - Take useful notes
  - Improve pronunciation and confidence when speaking/presenting
- Develop critical thinking skills
- Learn independent study skills

## Subjects

- Core
  - English for Academic Purposes (EAP)
- Elective (Choose four)
  - Accounting
  - Art History
  - Biology
  - Chemistry
  - Design
  - Economics
  - Geography
  - Physics
  - Mathematics – Calculus
  - Mathematics – Modelling
  - Statistics
  - Communications

Note: Subject availability is dependent on the intake.

## Assessment method

- 50% final examinations + 50% internal assessment
- Pass mark for elective courses is 50%

A number of courses have increased the variety of their assessment methods to include one or more of the following:

- Digital assessments
- Collaborative assessments
- Research-based assessments
- Practical assessments
- Assessments that include a presentation (e.g. face-to-face, video)
- Assessments that give students choices
- Assessments that are larger, spread over a longer time, and allow for drafting/checking in throughout

## Enrol in a Foundation Studies programme and receive:

1. An offer of place for the Foundation Studies programme
2. A conditional offer of place for an undergraduate degree programme at the University of Auckland

## To enter a University of Auckland undergraduate programme

- Complete the Foundation Studies programme successfully
- Score the required aggregate mark set by the faculty of your degree choice across four academic subjects in Foundation Studies. See page 14 for more details.
- Achieve a minimum English (EAP) score of 65% (B- grade), or 50% (C- grade) in EAP with IELTS 6.0 overall and no bands below 5.5 (or equivalent)

\*The University of Auckland Certificate in Foundation Studies (Level 3) is delivered by UP International College New Zealand Limited trading as University of Auckland International College on behalf of the University of Auckland.

## GPA calculation method

The following table explains aggregate mark conversions:

% Score	Letter Grade	Grade Point
0 – 49.5	F	N/A
49.5 – 54.5	C-	1
54.5 – 59.5	C	2
59.5 – 64.5	C+	3
64.5 – 69.5	B-	4
69.5 – 74.5	B	5
74.5 – 79.5	B+	6
79.5 – 84.5	A-	7
84.5 – 89.5	A	8
89.5 – 100	A+	9

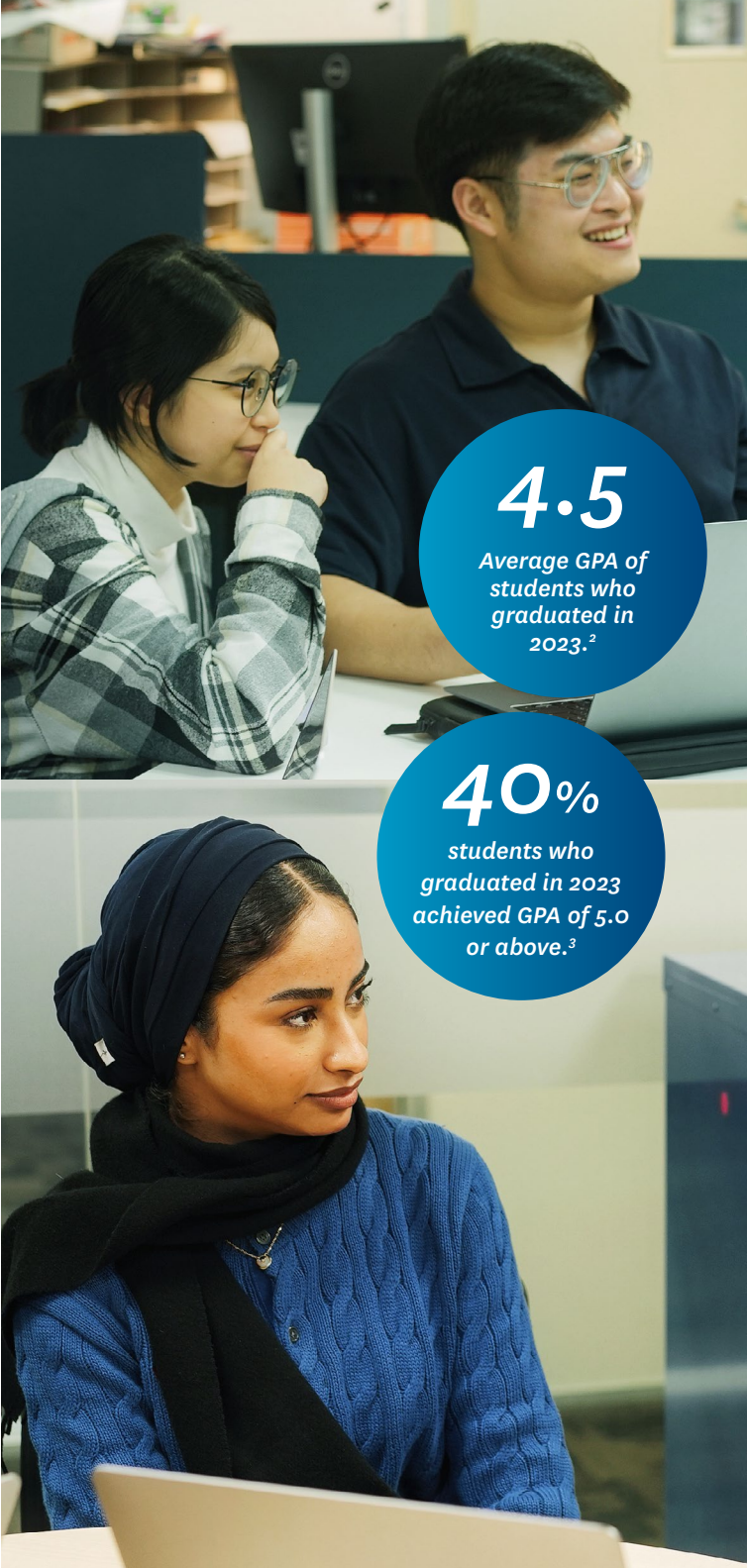
## Example

Student X obtains the following results (Points) in her subjects. These are then converted to a Letter Grade at the end of the course, which is then turned into Grade Points, and then a Grade Point Average by University of Auckland.

Subject	Points	Letter Grade	Grade Point
Statistics	62.3	C+	3
Geography	51.6	C-	1
Accounting	77.0	B+	6
Chemistry	79.5	A-	7

Student X's GPA is  $\frac{3+1+6+7}{4} = 4.25 = \mathbf{4.3}$

So Student X would be able to enter a Bachelor of Arts (assuming that she also met the literacy requirements).



4.5  
Average GPA of  
students who  
graduated in  
2023.<sup>2</sup>

40%  
students who  
graduated in 2023  
achieved GPA of 5.0  
or above.<sup>3</sup>

## Sample Course Progression

Programme option	English requirement <sup>4</sup>	2025												2026													
		J	F	M	A	M	J	J	A	S	O	N	D	J	F	M	A	M	J	J	A	S	O	N	D		
Accelerated (5- 6 months)	IELTS 6.0 (min. 5.5 in all bands)							Start Degree																			
															Start Degree												
Fast-track (8-9 months)	IELTS 5.5 (min. 5.0 in all bands – IELTS 6.0 overall preferred)																Start Degree										
																					Start Degree						
Standard (12 months)	IELTS 5.0 (min. 4.5 in all bands)													Start Degree													
																			Start Degree								

1. Pass rate is calculated based on final results of all academic subjects as of semester 2, 2024.  
2. The minimum GPA requirement to successfully proceed to the University of Auckland is 2.4.  
3. The degrees at the University of Auckland with minimum GPA requirements of 5.0 are Bachelor of Engineering, Health Sciences, Science - Biomedical, and Advanced Science  
4. For more information about English requirements, refer to the page 30.



# Foundation Connect

Delivered by UP Education, Foundation Connect provides a comprehensive, English-rich curriculum to prepare students for the Certificate in Foundation Studies (Level 3). This six-month extension programme allows students to develop their English skills, confidence and apply these English skills in an academic setting. Foundation Connect includes engagement in Mathematics and academic courses to give students a broader foundation for future learning.

The programme is marketed as Foundation Connect and the programme name is registered as "Intensive General English Course" at NZQA.

## Course structure

There are two compulsory subjects (English and English for Mathematics) and two academic subjects per term. These academic subjects will be used to prepare students for their future academic studies and contextualise their academic English usage.

- English – 11 hours per week
- English for Mathematics – 3 hours per week and 1 Flexible Learning Activity (FLA)
- Academic subjects – 3 live lessons and 1 FLA - students do four academic subjects with two in the first term and two in the second term

The academic subjects available are usually: Business; Science; Humanities (Geography) and Media.

### Each term:

- English - 9 live lessons per week
- Maths - 3 live lessons and 1 FLA per week
- 2 Academic subjects - 3 live lessons - 1 FLA

*"Here, the University of Auckland International College is a safe and supportive place to study. The education system here is fantastic, with teachers who genuinely care about your success."*

**Hannah from South Korea**  
Foundation Connect and the University of Auckland Certificate in Foundation Studies (Standard) Graduate



Watch her full story



## Hannah's journey



Learn more about  
Foundation Connect



# Pathways Link Programme

This programme aims to equip you with essential foundational knowledge, skills, and the confidence necessary to excel in your future Foundation studies. The accelerated one-year programme will offer successful students entry into the University of Auckland Foundation Studies programmes. PLP is an innovative educational initiative designed specifically for international students aged 14-17 who have recently finished their junior high school education and aspire to study abroad.

Pathways Link is registered as 'Pathways Link - L1A and L1B (Level 1) (Training Scheme)' at NZQA.

## Sample course progression



Intake/ Month	2025												2026												2027													
	J	F	M	A	M	J	J	A	S	O	N	D	J	F	M	A	M	J	J	A	S	O	N	D	J	F	M	A	M	J	J	A	S	O	N	D		
Feb Intake	Pathways Link													Foundation Studies													>Degree											
Jul Intake					Pathways Link												Foundation Studies												>Degree									

## Course structure

The Pathways Link Programme caters specifically to the unique needs of younger international students, providing them with a supportive and nurturing environment to excel academically and culturally.

Students will receive a broad and varied curriculum, to help them learn English, prepare for Foundation Studies, and find their preferences for degree study.

Example subjects studied are:

- PLP1A: English, Maths, Biology, Economics, Global Studies
- PLP1B: English, Maths, Physics, Business, Media Studies

There will be regular opportunities for individual and team games and sports, using different locations across Auckland. Students should bring physical education clothing and shoes.

## A package offer and visa

A package offer will be issued to students, which includes the Pathways Link Programme, the University of Auckland Certificate in Foundation Studies, and the University of Auckland Bachelor's degree. Students may then apply for a pathway student visa, subject to Immigration New Zealand requirements.

## Progression requirements

To accept your conditional offer for the University of Auckland Certificate in Foundation Studies, students must meet the minimum progression grades:

- English 60%
- Minimum score in all academic subjects 50%
- Pass all Learning Outcomes



Learn more about  
Pathways Link Programme





# University of Auckland

## Life on campus

### Orientation

The International Office arranges an Orientation programme for new international students in Semesters One and Two. International Orientation is designed to welcome you and give you all the information you need about the University and living in Auckland. In addition, the University provides Faculty Orientation for all new students and will also have the opportunity to meet new people and make friends at a range of social and cultural activities. The Business School provides an Orientation for Business coursework masters students in Quarters Two and Four.

[auckland.ac.nz/internationalorientation](http://auckland.ac.nz/internationalorientation)

### What’s On E-Newsletter

What’s On is your guide to University student life. It covers all aspects of non-academic student life, including events, club notices, workshops and more. You will receive the e-newsletter each fortnight and it is a great way to stay in the loop.

[auckland.ac.nz/en/on-campus/life-on-campus/whats-on.html](http://auckland.ac.nz/en/on-campus/life-on-campus/whats-on.html)

### Clubs and societies

Joining a club is a fantastic way to make friends, participate in activities and learn things outside of the lecture theatre, making your student experience richer and more rewarding. Keen on kayaking? Delight in desserts? Focused on photography? There are more than 200 clubs on campus – make sure you check them out at the Clubs Expo held during Orientation Week.

[auckland.ac.nz/clubs](http://auckland.ac.nz/clubs)

### UniGuides

UniGuides are current students from your faculty who can help you find your way around campus and answer your questions during the first few weeks of the semester. You will meet your UniGuide at your Faculty Orientation Day.

[auckland.ac.nz/uniguide](http://auckland.ac.nz/uniguide)

# University of Auckland

## International College

### Life on campus

### Orientation

Orientation week is the perfect introduction to the University of Auckland International College. It is a chance for you to meet other students and be introduced to your Head of College and other staff. You will complete your subject selection. You will also have a tour of the University of Auckland and meet some UoA staff.

### Caring for your health & wellbeing

We have staff trained and registered with Red Cross for minor health and wellbeing issues at the International College. If students need further medical treatment, a doctor is available by appointment.

### The student learning centre and common room

The social hub of our International College campus – gather here to watch movies, play board games, study and socialise.

**Open Hours: Monday to Friday – 08.30am until 5:00pm**

### Recreation and sports

Sport and Recreation provide a wide range of facilities and services to students. If you’re keen on sport you could sign up for one of the UNIM8S Social Sports Leagues, or represent your faculty in the Interfaculty Sports Championship.

Recreation membership includes access to a wide range of group fitness classes, weights and cardio equipment. We also offer additional programmes and services such as boxfit, selfdefence, personalised programmes and much more.



*“By immersing myself in this new academic and cultural environment, I have opened new horizons and broadened my perspective in ways I never imagined.”*

### Tianyu from China

The University of Auckland Certificate in Foundation Studies (Standard)



*Read her full story*

## Sample Timetable

	Monday	Tuesday	Wednesday	Thursday	Friday
10:00-11:10	SDS	SDS	EAP	Statistics	SDS
11:10-12:20	Physics	Statistics	SDS	SDS	EAP
12:20-13:30	SDS	EAP	Accounting	Physics	Design
13:30-14:40	Accounting	Physics	Design	EAP	SDS
14:40-15:50	EAP	SDS	SDS	SDS	Accounting
15:50-17:00	Design	SDS	EAP	SDS	Statistics

Please note that exact time of each class might be subject to change.

SDS = Self-directed Study

## Living costs in Auckland

Cost of living*	Homestay estimated weekly cost in NZD
Accommodation	\$440
Electricity, water & gas	Included in homestay fee
Mobile phone plan	\$15
Public transport	\$0 - \$50
Food	Included in full-board homestay fee
Free time activities	\$50 - \$150

\*Please note that this table is only applicable to Homestay prices. Costs can vary depending on lifestyle, accommodation, and hobbies and interests. However, for a reasonable standard of living, the estimated living cost per year is \$20,000 to \$27,000 NZD.

### Additional Costs

- Flights to and from New Zealand
- Tuition fees
- Clothes





# University of Auckland Student Support

## Student Hubs

For more help or information on degree planning, visa services and online student services.

[auckland.ac.nz/student-hubs](https://auckland.ac.nz/student-hubs)

## International Student Support

A team of trained advisers is available to help with visas, finance, accommodation, learning services and student health.

[auckland.ac.nz/student-support-and-services](https://auckland.ac.nz/student-support-and-services)

## Health and Student Wellbeing

Campus Care offers a safe, confidential and free service that supports the health, wellbeing and safety of everyone at the University of Auckland. They can help with anxiety and distress issues, financial concerns, bullying, mental health concerns, and much more.

The team comprises highly skilled and experienced registered counsellors and clinical psychologists, who are specially trained in dealing with student issues.

[auckland.ac.nz/campus-care](https://auckland.ac.nz/campus-care)

## Career Development and Employability Services (CDES)

CDES can help you find your direction and develop your skills and employability. You will be able to use the online career management system, MyCDES+. The system features a job board, resources and bookings for workshops, events and appointments with Career Development Consultants.

This service is free for up to three years after graduating from the University.

[cdes.auckland.ac.nz](https://cdes.auckland.ac.nz)

# University of Auckland International College

## Learner Success

*Offering a level of care that sets us apart.*

Support is provided from the moment you contact us, to enrolling in a course and throughout your studies. We are here to offer you help, both in-person and online, so that your student life is happy and rewarding.

## Learner Success Team

You can visit our friendly Learner Success Team in person or email them for assistance with practical and personal challenges.

E. [learnersuccess@up.education](mailto:learnersuccess@up.education)

24/7 Emergency Phone: +64 21 597 135

*“The Learner Success Team monitors the attendance, wellbeing and academic progress of every student, and is ready to step in and provide support when necessary. Our goal is to work with students to make sure that every student has the best chance of being successful, having a great experience and progressing to the University of Auckland.”*

*We work closely with internal teams (e.g. academic, administrative) and external agencies (e.g. university partner, counselling services) to make sure that students are well-supported and have the best tools available to meet their needs.”*



KATIE GAO  
Learner Success Team Lead  
University of Auckland International College

# Administrative Service Support

*We have a team dedicated to key areas, like visa, insurance, and accommodation.*

E. [adminservices@up.education](mailto:adminservices@up.education)

## Visa checking and monitoring

The Administrative Services Team is responsible for checking and monitoring the visa status of our students. They will send reminders to students whose visas are about to expire, communicate with Immigration New Zealand when there are errors on the visas.

## Medical and travel insurance

The Education (Pastoral Care of Tertiary and International Learners) Code of Practice 2021 requires all international students studying in New Zealand to have appropriate health and travel insurance during their period of study.

Allianz Partners is our preferred insurance provider. Enrolled international students will be charged Allianz’s Studentsafe Inbound University insurance premium when enrolment is completed. You must pay this fee unless the University approves the use of an alternative insurance provider.

You must have approved insurance for the duration of your study and covering the duration of their visa or until they depart New Zealand, whichever comes first.

*Note: Your University of Auckland student ID number is also your insurance policy number. You are not automatically covered for pre-existing medical conditions. However, cover can be arranged in certain circumstances on application to Allianz before your programme starts.*

## Accommodation

International students may choose to live with their parent(s) or a designated caregiver. To get the most out of experiencing life in New Zealand, you are encouraged to live with a local homestay family.

*For more details about the accommodation, please refer to the information on the right-hand side.*

# Accommodation

## Homestay

If you are under 18, it is mandatory that you reserve your accommodation through the International College. This option is available to students over 18 as well.

Homestay accommodation includes a room for you with a bed, desk, adequate heating and internet access. All meals are included for full-board Homestay option.

- A 24/7 number is provided in case of emergency
- All accommodation is thoroughly checked – each homestay family is interviewed and the home inspected before a student is placed.
- All homestay providers sign a contract agreeing to specific rules and standards and undergo a vetting procedure by New Zealand Police.
- All students under 18 are visited in their accommodation by our accommodation agency quarterly until students turn 18.
- UP Education will arrange payment to be made to the homestay provider.

## Student apartment

Students over 18 may wish to live in private student apartment accommodation. Note this is the responsibility of the student/parent(s)/agent to arrange.

## University accommodation

Students over 17 can access University accommodation while studying the Foundation course.

[auckland.ac.nz/accommodation](https://auckland.ac.nz/accommodation)



*These photos were taken at the University of Auckland accommodation halls.*



Watch how our  
homestay supports  
students



*Images are for illustrative purposes only and may not represent the exact accommodation. Each homestay is unique.*



International Qualifications	Qualification	Standard (12 months)	Fast-track (8-9 months)	Accelerated (6 months)
Global Assessment Certificate - GAC	Level 2	2.8	3.3	-
International Baculureate - IB	First year	Grade 4 in 4 relevant subjects	1st year - 3 Grade 4 and 1 Grade 5 in 4 relevant subjects	2 Grade 4 and 2 Grade 5 in 4 relevant subjects/ Second year total greater than 16
Cambridge International Examination - O level/IGCSE/GCSE	-	2C grades and 2D grades in 4 CIE official subjects	4Cs in four CIE official subjects	1B grade and 3C grades in 4 CIE official subject
Cambridge International Examination - A level	-	48 UCAS points	60 UCAS points	80 UCAS points

Country specific qualifications <small>(Scan the QR code to find out more other countries)</small>	Qualification	Standard (12 months)	Fast-track (8-9 months)	Accelerated (6 months)
New Zealand^	NCEA	30 credits at NCEA from mixed of level 2 or above with no fewer than 6 credits in each of subjects (combined credits from related subjects) including Mathematics	36 credits at NCEA from mixed of level 2 or above with no fewer than 6 credits in each of subjects (combined credits from related subjects) including Mathematics	48 credits from level 2 and level 3 with no fewer than 10 credits in each subject (combined credits from relevant subjects including Mathematics)
China*	Senior Highschool	Senior 1 and Term 1 of Senior 2-85%** ; Senior Year 2-75% or Senior Year 3-60%	Senior Year 2-80% or Senior Year 3-65%	Senior Year 3-75% in 4 subjects OR Chinese National College Entrance Examinations (Gaokao) – 50 or greater
	Vocational School	Year 3 with relevant subjects: >75%	Year 3 with relevant subjects:>80%	-
South Korea	High school certificate Year 2	65% or Rank 7.0	70% or Rank 6.5	80% Rank 4.5
	Senior High Year 3			70% or Rank 5.0 in academic subjects
	GED	attain a pass	attain overall 70% average	attain overall 80% average or 70% in academic subject

Country specific qualifications <small>(Scan the QR code to find out more other countries)</small>	Qualification	Foundation Connect (6 months)	Pathways Link Programme (12 months)
New Zealand	NCEA	35 credits at level 1 with no fewer than 10 credits in each of 3 subjects including maths	Completion of Year 10 with a good school report, including satisfactory attendance (90%) and teacher comments. This assessment will be conducted by the Head of College
China	Senior Highschool	Senior secondary year 1: 70%	-
	Middle School	-	Completion of Middle School with Year 3 at 70%, or an average of 70% across all three years
South Korea	High School	High school certificate year 1: 70%	-
	Middle School	-	Completion of Middle School
	GEE	-	70% in the Middle School GEE

^Teachers’ comments and attendance rate are considered to determine entry. An interview may be applicable if previously study in New Zealand.  
\*Note that GPA will be based on the average of all subjects for the study period of high school.  
\*\*Students who apply for the July intake can do so with the first half of Senior 2 but must continue their study in Term 2. The Admissions Team will request for the final report when it is available.  
  
This information is to be used as a guide only to determine entrance. UP Education reserves the right to change the requirements at any time without prior notice.

English Language Requirements

Programme option	IELTS
Accelerated	6.0 and no band less than 5.5
Fast-track	5.5 and no band less than 5.0 (preferred overall score: 6.0)
Standard	5.0 and no band less than 4.5
Foundation Connect	4.5 and no band less than 4.0
Pathways Link Programme	4.5 and no band less than 4.0

All students need to provide evidence of their English proficiency upon application.

- If you are an international applicant and your first language is not English, you will need to provide satisfactory evidence of your English proficiency.
- English is considered the first language of citizens of Canada, Ireland, Singapore, the United Kingdom and the United States of America.
- If you are a domestic applicant and your first language is not English, you will be asked to provide evidence of your competence in written and spoken English.

The UP English Language Test (UPELT) has been developed to provide prospective students with an opportunity to quickly obtain an English language score prior to enrolment into a programme of their choice.

The test is facilitated online by highly qualified and experienced staff. It consists of computer-based, hand-written, and examiner-led tasks. Test description and instructions for test preparation are made available to all prospective candidates in advance, and a practice test is provided. Measures are taken to ensure the integrity of the test.

The UPELT is facilitated every Wednesday afternoon (1pm NZ Standard Time). Bookings can be arranged through the UP Admissions Team, admissions@up.education.

UP English Lanaguage Test Summary

Part	Tasks	Time (Online)
Reading	<b>3 short passages (approx. 300-400 words each) from:</b> <ul style="list-style-type: none"><li>a textbook chapter or report</li><li>an academic article or essay</li><li>an academic abstract</li></ul>	<b>45 minutes</b>
Listening	<b>2 tracks:</b> <ul style="list-style-type: none"><li>a conversation in an academic setting</li><li>a part of a lecture</li></ul>	<b>20 minutes</b> <i>(Plus time to record answers)</i>
Writing	<b>1 essay, 220-250 words</b> <ul style="list-style-type: none"><li>problem and solution</li><li>cause and effect</li><li>advantage and disadvantages</li></ul>	<b>40 minutes</b> <i>(Plus time to upload the essay)</i>
Speaking	<b>2 tasks led by an examiner:</b> <ul style="list-style-type: none"><li>a conversation on familiar topics</li><li>a discussion of a topical issue</li></ul>	<b>10 minutes</b> <i>(Plus time for preparation)</i>

One day before the test, candidates will be sent:

- information about the UPELT and technical requirements
- the test security procedure
- instructions on how to set up the room and desk for the test
- demonstration of how to use two devices with cameras during the test
- login instructions
- a practice test
- a Microsoft Teams link for joining the test



# Programme Options and Fees

Learn more about  
programme options and fees



Foundation Studies				Foundation Connect*	Pathways Link*
Programme type	Accelerated	Fast-track	Standard	Progression to Foundation	Progression to Foundation
Duration	6 months (2 terms)	8-9 months (3 terms)	12 months (4 terms)	6 months (2 terms)	12 months (4 terms)
Tuition fees	\$26,084 NZD	\$34,778 NZD	\$34,778 NZD	\$17,650 NZD	\$33,750 NZD
Resource fee	-	-	-	\$1,320 NZD	\$2,200 NZD
Enrolment fee	\$500 NZD	\$500 NZD	\$500 NZD	\$500 NZD	\$500 NZD
Intake dates	3 February, 8 September	28 April, 6 October	3 February, 21 July	3 February, 28 April, 21 July, 6 October	3 February, 21 July
Orientation dates	28 January, 3 September	22 April, 29 September	28 January, 14 July	28 January, 22 April, 14 July, 29 September	28 January, 14 July

\*Students starting with Foundation Connect / Pathways Link Programme will pay the Resource and Enrolment once and will not be charged again upon progression to Foundation.

## Scholarships

Learn more about  
scholarships



### Undergraduate scholarship

Upon successful completion of the Foundation course, the University of Auckland awards Top 10 students of each semester with a Top Achievers Award, which is a **\$20,000 NZD** scholarship on first-year tuition fees.

### Foundation scholarship

High Achiever Awards are available and this will go towards the fees for the Foundation course.

### Foundation Connect scholarship

Student who successfully progress from Foundation Connect programme to Standard Foundation programme will be awarded a scholarship if they achieve top results. The scholarship will be awarded depending on their final grades.

### Pathways Link scholarship

The scholarship is available for the students who apply and are accepted into the University of Auckland Pathways Link programme in 2025. Upon successful progression to Foundation Studies Programme, there will be scholarships available.



Please note: All scholarships are only applicable to students who pay international fees.

# Accommodation Fees

Homestay	NZD
Homestay Placement fee ( <i>one-off</i> )*	\$350
Homestay Replacement fee ( <i>one-off</i> )**	\$250
Standard Homestay - Full board***	\$440/week
Designated caregiver (DCG) - Under 18 only	NZD
DCG Assessment fee	\$350
DCG Reassessment fee ( <i>change DCG</i> )+	\$250
Under 18 accommodation guarantee and service fees^	NZD
Per year	\$1,000
Per term	\$250
Additional fees	NZD
Urgent Booking fee – Full board ( <i>one off</i> ) <i>applicable for bookings received within 7 days of arrival</i>	\$440
Short-stay ( <i>less than 1 week</i> ) / Emergency homestay - Full board	\$130/night
Homestay Retainer^^^	\$250/week
Airport pick-up	NZD
Airport transfer ( <i>Pick-up/drop-off</i> ) ( <i>One way per person</i> )	\$150
Airport transfer - no show	\$80
Transfer of additional passenger	\$80
Transfer of additional luggage/oversized luggage	\$30/item
Airport check-in assistant and transfer for Under 18 learners	\$50

## Insurance

Studentsafe Inbound	NZD
Medical and travel insurance (12 months)*	\$855

Please note that Accommodation Placement Fee, Designated Caregiver Assessment Fee or Airport pick up fee are non-refundable once the arrangement is confirmed.

\*If UP Education coordinates student accommodation.

\*\*Fee charged when student requests a change of homestay for reasons deemed unacceptable, or if student frequently changes homestays (fee charged at discretion of the Accommodation team).

\*\*\*Full-board – 3 meals a day are provided

+Fee charged when change to a new Designated Caregiver

^Allows for homestays for students under 18 to be checked once per term to ensure the Education Code of Practice requirements are being met.

^^Fee applies when students go away for more than seven days (6 nights) and want to keep the Homestay room.

\* International students must have comprehensive medical and travel insurance while in New Zealand. Enrolled international students will be charged Allianz's Studentsafe Inbound University insurance premium when enrolment is completed. The final cost of insurance will depend on the length of requested insurance cover period.



# How to apply

Visit **Enroller**, our online enrolment portal, where you will be able to set up your account and manage the entire enrolment process from application through to arrival.

> [www.internationalcollege.ac.nz/enroller](http://www.internationalcollege.ac.nz/enroller)

## Step 1. Application

Create a secure account and complete the application form with the guidance of a step-by-step process.

Ensure that you have the following documents ready to be uploaded:

- Certified copy of your passport\*
- Copy of your most recent school reports or other qualifications
- Evidence of achieving the minimum English proficiency requirement

*\*Your identity document will have to be certified or verified by an approved person before you can submit it online.*

For more information go to:

[auckland.ac.nz/en/study/applications-and-admissions/how-to-apply/supporting-documents/certifying-copies-of-your-documents-for-admissions.html](http://auckland.ac.nz/en/study/applications-and-admissions/how-to-apply/supporting-documents/certifying-copies-of-your-documents-for-admissions.html)

APPLY NOW



## Step 2. Accept the Offer

Once your application has been received and assessed, you will:

- Receive an offer letter for the Foundation programme
- Be able to review and update the required documents up until accepting the offer

Once conditions of entry have been met, you will receive:

- An unconditional offer letter for the Foundation programme
- A conditional offer for your degree
- Details on how to create your student account with the University

## Step 3. Payment

- Sign into Student Services Online. Click on the 'Fees and Payments' icon to open the 'Account Summary' page.
- Click 'Pay by Flywire -International' tab and enter the Total amount, on the Fees Estimate of your offer letter, in the Payment Amount (NZ Dollars) field, you may need to 'Unblock your Pop-ups' in order to 'Transfer to pay by Flywire' so that Flywire site can open in a new window.
- Click the 'Transfer to pay by Flywire' icon and follow the on-screen instructions to complete your payment. You can visit Flywire fees payment method for international students for more information. At the same time as you receive your unconditional (firm) offer from the University, you will also receive an invoice and payment instructions for the UP Education application fee.
- You should also pay the relevant application fee to UP Education directly through Flywire. Please go to [upic.flywire.com](http://upic.flywire.com). If you need help with your payment, go to [flywire.com/support](http://flywire.com/support). The fees to pay UP Education directly will be: Application Fee/IELTS Test fee (if applicable)/Airport Pick Up Fee (if applicable)/ Accommodation fees (if applicable).

## Step 4. Visa Application

Apply for your student visa online at [immigration.govt.nz/new-zealand-visas/apply-for-a-visa](http://immigration.govt.nz/new-zealand-visas/apply-for-a-visa)

## Step 5. Enrolment

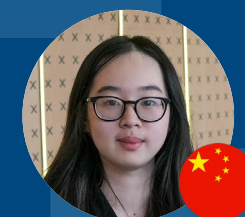
Once your payment is received, you will receive an email from [admissions@up.education](mailto:admissions@up.education) with your confirmation letter.

Please pay attention on your email inbox, including spam and trash box for emails from [adminservices@up.education](mailto:adminservices@up.education), they include important information such as orientation schedules, subject selection link and deadline. Read the emails carefully and reply to their emails with requested information to complete your enrolment process.

If you have any questions about the application process, contact the Administrative Service Support Team at [admissions@up.education](mailto:admissions@up.education)

# Talk to our students

The University of Auckland is a great place to study. But don't just take our word for it! Our students are happy to help you with any questions about life at the University of Auckland or studying in New Zealand.



Tianyu Yang

Hi there! I'm Tianyu Yang from Zhejiang, China. As a first year CS student of University of Auckland, I'm glad to answer your questions and share my experiences. So just feel free to ask me anything! Hope my sharing can inspire you! Nice to meet you!



Sonyta Seng

Hello, My name is Sonyta Seng. I'm currently studying Bachelor of Architecture in University of Auckland in second year. Being an international student who going to study in another country helps you to learn more things in life. As one of the international student ambassador, feel free to ask me any questions that might concerns you. Let's be open to each other and be friends :)



Siya

Kia aro! I am Siya, a first-year student studying engineering in University of Auckland. I can speak Cantonese, Chinese, English and Hakka. Let's start chatting!



Luyi Hui

Studying in a foreign country is a lonely road, I had never been abroad before university. It's happy to spend my university life here. Hope my experience can help you. And if you have any question please chat with me, even just a weather greeting. I like playing games like final fantasy XIV, Ace Attorney... I have a lots of hobbies. So don't be shy (●'w'●) Nice to meet you!







UNIVERSITY OF  
AUCKLAND  
Waipapa Taumata Rau  
NEW ZEALAND

# International College

Kāreti ki te Ao

## Code of Practice for the Pastoral Care of International Students

The University of Auckland Certificate in Foundation Studies is delivered by UP Education on behalf of the University of Auckland under the brand name University of Auckland International College.

UP Education, and its schools, is a signatory to The Education (Pastoral Care of Tertiary and International Learners) Code of Practice 2021. Published by the New Zealand Ministry of Education and administered by the New Zealand Qualifications Authority (NZQA), the Code is designed to ensure international students are well informed, safe and properly cared for. Visit: [nzqa.govt.nz/the-code](https://nzqa.govt.nz/the-code)

UP Education partners with leading universities in New Zealand and Australia to provide learning pathways to international students, equipping them with the knowledge, skills and confidence to excel at English-language universities.

Every effort was made to present accurate information in this publication at the time of printing. (2 April 2025)

UP Education reserves the right to change information without notice where this is considered necessary or desirable.

[internationalcollege.ac.nz](https://internationalcollege.ac.nz)



Follow us on:



Facebook: <https://www.facebook.com/uoaicnz>



Instagram: <https://www.instagram.com/uoa.ic>



Youtube: <https://www.youtube.com/c/UPEducationNZ>

## All enquiries and applications to:

The University of Auckland International College  
345 Queen St  
Auckland  
New Zealand

P +64 9 558 3536

E [international@up.education](mailto:international@up.education)

W [internationalcollege.ac.nz](https://internationalcollege.ac.nz)

After Hour Emergency Phone No +64 (0) 21 597 135