

SCHOLARSHIP AVAILABLE  
UP TO  
**25%**  
SCHOLARSHIP AVAILABLE

```

if path:
    self.file = open(os.path.join(path,
    self.file.seek(0)
    self.fingerprints.update({


@classmethod
def from_settings(cls, settings):
    debug = settings.getbool("SUPERFINGER_DEBUG")
    return cls(job_dir(settings), debug)

def request_seen(self, request):
    fp = self.request_fingerprint(request)
    if fp in self.fingerprints:
        return True
    self.fingerprints.add(fp)
    
```

# MASTER OF SOFTWARE ENGINEERING

With our strong industry connections and extensive experience, the Master of Software Engineering | He Tohu Paerua Pūkenga Pūmanawa prepares you to become a creative and adaptive software specialist. This programme builds expertise in advanced software engineering, digital technologies, and infrastructures, equipping you with the skills for a dynamic global career in the evolving tech landscape.

### Master of Software Engineering



**DURATION**  
1 year (3 trimesters)

**NZQF**  
Level 9

**CREDITS**  
180

Delivered by the Yoobee College of Creative Innovation

### Post study opportunities



International students who complete a degree or post-graduate qualification will have access to **Post Study Work Visa**. It allows you to stay and work in New Zealand for up to 3 years, depending on your level of study and how long you studied in New Zealand.<sup>1</sup>

### Future opportunities



Analyst programmer, developer programmer, software engineer, software tester, ICT manager, ICT security specialist, multimedia specialist, chief information officer and other software developers or related jobs appear on 'Tier 1 role eligible for straight to residence' **Green List 2022**. This means the Government is actively encouraging skilled software developers from overseas to work in New Zealand.<sup>2</sup>

## Career opportunities

- Software Developer
- Data Engineer
- Data Scientist
- Programmer
- Software Architect
- Project Manager
- Applications Designer
- Software Quality Manager
- Business Analyst
- Test Engineer
- Researcher
- Consultant

1. Find out more at [www.immigration.govt.nz/new-zealand-visas/visas/visa/post-study-work-visa](http://www.immigration.govt.nz/new-zealand-visas/visas/visa/post-study-work-visa)  
2. Find out more at [www.immigration.govt.nz/new-zealand-visas/apply-for-a-visa/tools-and-information/work-and-employment/green-list-occupations](http://www.immigration.govt.nz/new-zealand-visas/apply-for-a-visa/tools-and-information/work-and-employment/green-list-occupations)





# 86%

of our students continue to further study or secure employment



# 1,800+

students successfully trained each year at Yoobee



# 30+

We've been in the business for more than 30 years



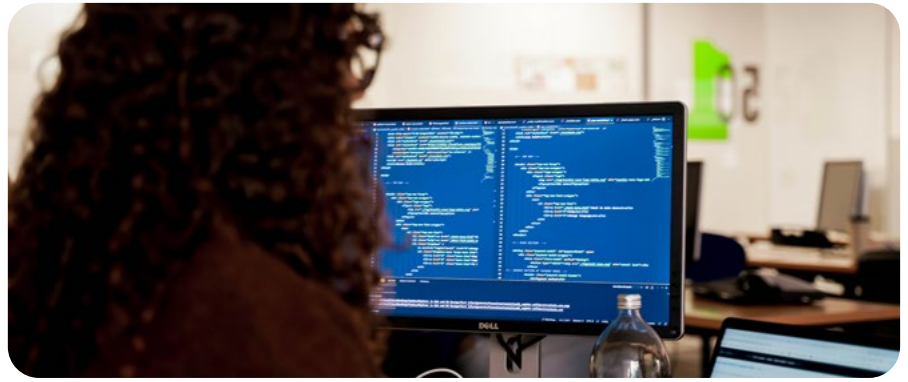
# 1

Part of UP Education, the largest private tertiary education business in New Zealand



# 4

campuses located across New Zealand



# WHY CHOOSE YOOBEE?

## SKILL GAP SOLUTION

The programme addresses a skills gap in software development by preparing commercially and creatively driven graduates to elevate New Zealand's presence on the global software stage.

## CUTTING-EDGE TECHNOLOGIES

Quantum computing, blockchain, and data analytics, enabling graduates to respond to the latest tech developments.

## EMPLOYER-ALIGNED CURRICULUM

Constant curriculum reassessment ensures students gain skills that are in demand, with full access to industry-standard equipment.

## EXPERT GUIDANCE AT YOOBEE

Our industry-experienced tutors who not only have vast expertise but also excel in teaching, supported by partnerships with tech leaders.

## PRACTICAL ASSESSMENTS

No traditional exams; assessments are project-based, both individual and group, mirroring real industry practices.

## OUR TECH PARTNERS

We partner with tech leaders to create valuable opportunities for our students, including curriculum input, guaranteed work experience, scholarships, and digital badges that highlight graduates' skills to global tech employers.



[YOOBEE.AC.NZ](https://yoobee.ac.nz)

# Master of Software Engineering, Level 9

SCAN TO  
LEARN MORE



## QUALIFICATION

Master of Software Engineering

## DURATION

1 year (3 trimesters)

## NZQF LEVEL

Level 9

## 2025 INTAKES

7 April, 28 July, 17 November

## CAMPUS

Auckland, Christchurch<sup>1</sup>

## TUITION FEE

\$36,000 NZD

## RESOURCE FEE

\$2,000 NZD

## ADMINISTRATION FEE

\$400 NZD

## SCHOLARSHIP

Up to **25%** of the tuition fee

### Criteria for eligibility:

- Students must submit a personal statement explaining why they believe they are eligible for the scholarship, OR
- Students must participate in a scholarship interview.

1. Available from the April 2025 intake. For more details, please contact the school or your agent.

2. Please note that not all students will receive 25% of the scholarship; the exact amount depends on the student's performance during the interview or the assessment of their personal statement. For more details, please contact the Regional Managers.

## WHAT WILL YOU LEARN?

### TRIMESTER 1

You will develop broad operational, technical, and theoretical knowledge of professional practices within the software development industry, through a focus on individual and collaborative problem-based learning.

- Professional Software Engineering (30 credits)
- Research Methods (15 credits)
- Quantum Computing (15 credits)

### TRIMESTER 2

Introduction to several cutting-edge technologies through a mix of lectures and workshops, and project-based, collaborative learning. You will be introduced to critical thinking tools that help explore and develop an understanding of personal pathways within the wider context of industry and society.

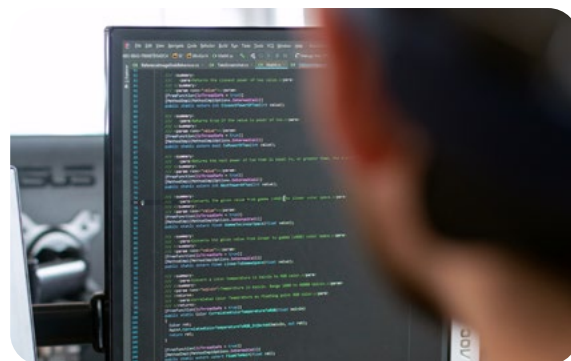
- Data Analytics (15 credits)
- Blockchain and Decentralised Digital Identity (15 credits)
- Cloud Security (15 credits)
- Intelligent Transportation Systems (15 credits)

### TRIMESTER 3

Providing assessment frameworks, cooperative education opportunities with industry, and supervision from lecturers to conduct self-driven research. You will have a opportunity to engage in high-level inquiry, and a practice-centred project that advances knowledge within the software engineering domain.

- Industry based Capstone Research Project (60 credits)

Upon completion of this one-year programme, you will have earned 180 credits.



## SOFTWARE

Throughout your study you will use a range of open-source software. Yoobee will also offer subscriptions with IEEE Xplore, computer society digital library (CSDL) and O'Reilly digital media.



## EQUIPMENT

You are required to bring your own device. This allows flexibility of study outside of class hours. If you do not own your own device, please discuss this with one of our team at enrolment.

Components of your device	Minimum Specs	Recommended Specs
CPU	Intel Core i5, or better	Intel Core i5, or better
Memory	8 GB	16 GB
Disk	256 GB SSD	512 GB SSD
Screen Resolution	1280 x 800	1920 x 1080

## Entry Requirements

International students must be at least 18 years old when commence the course.

### ACADEMIC

Standard entry assessment:

- Degree: Hold a bachelor's degree in engineering, computer science, information technology, physics, mathematics, business, or related disciplines; OR an acceptable equivalent qualification from a recognized university (or similar) overseas, Mathematics subjects (any subject including the concepts and topics of Linear Algebra, Vector, Matrix Multiplication, Graphic Theory, Set Theory and Probability Theory etc.) must be included in your transcript. AND
- Programming knowledge: Have substantial knowledge on programming, preferably in C++/Java/Python; OR passing a free online bridging course offered by Yoobee.

Alternative entry assessment:

- 2-3 years Diploma programme in related study areas with 3-4 years working experience in software developing.
- Alternative entry must be approved case by case by Head of Faculty.

### ENGLISH

IELTS 6.5 (Academic) with no band lower than 6.0 or equivalences approved by NZQA.

## Online Bridging Course

Yoobee online MSE bridging course is designed for applicants of MSE programme who met the academic entry requirements but do not have sufficient programming background. This is a self-paced online course that students will study at Yoobee online platform. The entire course contains three main topics

- Software Development Principles
- Programming with C++
- Object Oriented Programming

#### DURATION

10-12 weeks recommended

#### ASSESSMENT TYPE

Multi-Choice Questions

#### PASS GRADE

80%

#### MAX. ATTEMPTS

3 times

#### COST

Free

## Employability

Pay for software developers varies depending on skills, experience and where you work, with pay in Auckland being higher.

» Intermediate software developers usually earn

**\$80,000 to \$130,000**

» Senior software developers can earn

**\$110,000 to \$180,000**

» Team leaders and managers can earn

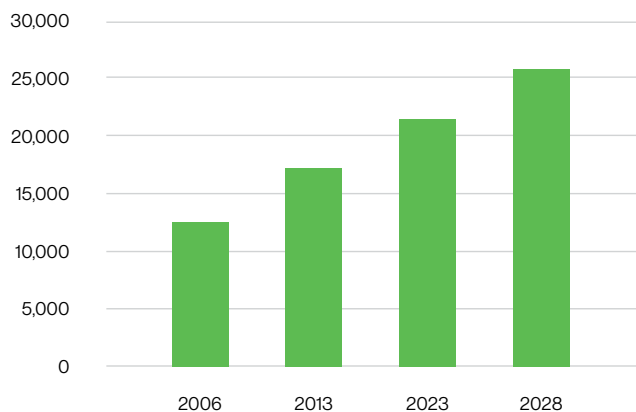
**\$120,000 to \$200,000**

» The average software engineer salary in New Zealand

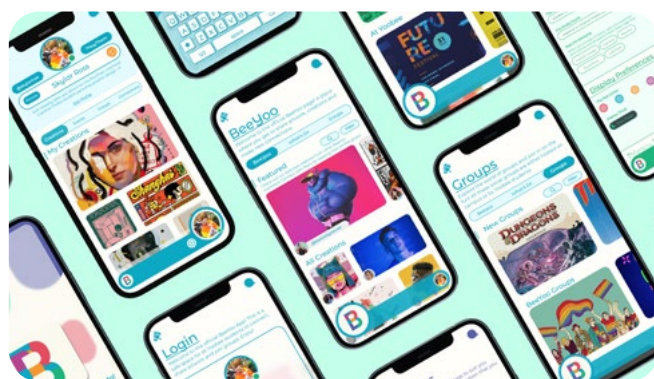
**\$110,000 per year \$56.41 per hour**

Sources: Recruit IT, 'Technology and Digital Salary Update Auckland', July 2021; and Recruit IT, 'Technology and Digital Salary Update Wellington', July 2021; Ministry of Business, Innovation & Employment, NZ Talent, 'Software Engineer average salary in New Zealand, 2022.'

## Employment chart



There has been a strong growth in the number of software developers employed in recent years, resulting in almost a doubling of employment from 2006 to 2013. There is also strong projected employment growth of around 4.4% per year from 2018-23 and 2.4% per year out to 2028.



Note: campus availability might be subject to change in each intake. International Tuition and Resource fees are in New Zealand Dollars and include GST. Every effort was made to present accurate information in this publication at the time of publication 14 November 2024. UP Education reserves the right to change this information at any time.

