



International College

Kāreti ki te Ao



Your journey with the University of Auckland begins here.

Guaranteed Enhanced Pathway to Top University *Pathways Link Programme*

Pathways Link programme aims to equip you with essential foundational knowledge, skills, and the confidence necessary to excel in your future Foundation studies.

The one-year programme will offer successful students entry into the University of Auckland Foundation Studies programmes.

- Upskill in academic English and gain essential subject knowledge, critical study skills, computer proficiency and research techniques
- Gain skills, knowledge and confidence to grow as a person as you learn
- Every student will have a weekly meeting with their pastoral care tutor, to talk about progress, and to listen to the student's personal experience of studying and living in New Zealand, which can be shared with parents.

The University of Auckland is a world-class research institution, and is renowned for its focus on innovation and entrepreneurship.

Top 100

worldwide (68th). The only New Zealand university in the Top 100¹

8500+

international students attend the University of Auckland from 120+ countries



#12

in Global University Impact Rankings²

8 subjects in the **TOP 50** worldwide³

Top 10

in the world for Sustainability⁴

33%

of the top-rated researchers in the country

University of Auckland is the New Zealand's largest research organisation



¹ Times Higher Education World University Rankings 2023 and QS World University Rankings 2024
² THE Impact Rankings 2023
³ QS World University Rankings by Subject 2023
⁴ QS Sustainability Rankings 2023

Junior High School / New Zealand Year 10 Completion

Pathways Link Programme

Duration: 12 months

Certificate in Foundation Studies

Duration: 12 months

University Degree

Duration: 3 years

Curriculum

Students will receive a broad and varied curriculum, to help them learn English, prepare for Foundation Studies, and find their preferences for degree study.

- PLP1A: English, Maths, Science, Business, Geography
- PLP1B: English, Maths, Environmental Studies and Sustainability, Media Studies, Drawing and Design

There will be regular opportunities for individual and team games and sports, using different locations across Auckland. Students should bring physical education clothing and shoes

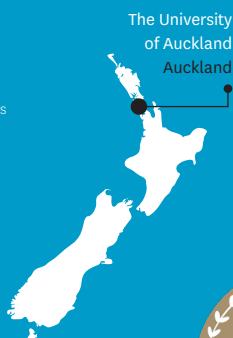
A package offer

The package offers including Pathways Link, University of Auckland Certificate in Foundation Studies and University of Auckland Bachelor will be issued to students. A pathway student visa can be applied subject to Immigration New Zealand requirements.

Find yourself in Auckland, New Zealand's largest city

Discover a safe, vibrant city in a country renowned for its rich cultural heritage, stunning landscapes, and unbeatable lifestyle. As well as a cosmopolitan centre Auckland offers beautiful beaches, tranquil islands and opportunities for activities and exploration on your doorstep.

- New Zealand is #2 most peaceful country in the world (Global Peace Index 2022)
- Auckland is ranked Top 40 in global student-friendly cities (QS World University Rankings 2023)
- Auckland is quintessentially Kiwi but also global in its atmosphere and outlook. More than 180 different cultural groups from around the world have made their home in Auckland.



Enrolment requirements

You must:

- Be aged from 14 to 16 years old
- Have English level: IELTS (Academic) score of 4.5 with no band score lower than 4.0, or equivalent
- Have completed:
 - » China: Completion of the last year of Junior High School.
 - » Rest of World: Completed the equivalent of New Zealand Year 10

Scholarships

The scholarship is valued at **\$5,000 NZD** of the tuition fee for the students who apply and are accepted into the University of Auckland Pathways Link programme in the February intake of 2024.

Meet UP Education

The University of Auckland Pathways Link Programme is delivered by UP Education who have been helping international students achieve outstanding graduate outcomes and bright futures for more than 20 years.

- Low student-teacher ratio
- Classes are taught at the University of Auckland International College, 345 Queen Street, Auckland CBD
- Easy ten-minute walk from The University of Auckland

Under 18 international students must live with a homestay, with a designated caregiver, or parent(s).



Pathways Link Programme Overview

Registered name: Pathways Link - L1A and L1B (Level 1)(Training Scheme)

Duration 12 months

Tuition fee (NZD)^ \$32,000

Resource fee (NZD) \$2,000

Enrolment fee (NZD) \$400

Scholarships (available for the February intake of 2024) \$5,000

English language requirements IELTS (Academic) score of 4.5 with no band score lower than 4.0*

Progression requirements to Foundation Studies** English 60%
Minimum score in all subjects 55%
Maths and two other subjects 65%

2024 Start dates (including On Campus Orientation) 5 February
16 July

^ Tuition Fee subject to change

*or agreed equivalents including UP English Language Test

** Students who successfully complete the programme but do not meet the required grades to progress to Foundation Studies will have the opportunity to enroll in Foundation Connect

How to apply

To find out more, contact your agent or visit our website

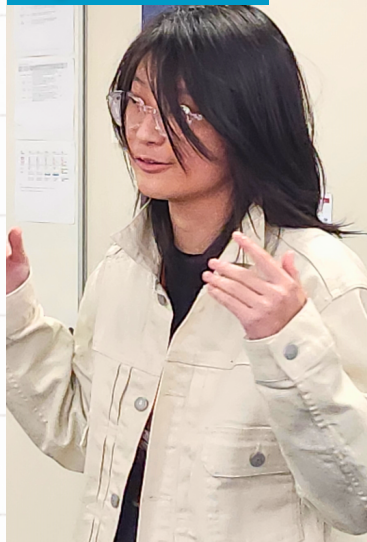
W: internationalcollege.ac.nz

E: international@up.education



PROGRAMME DELIVERED BY

Speeches



Students gave 2-minute individual speeches on the social issues they chose during the 4th week of the first term. There were a total of 13 topics, and despite their nervousness during the first speeches, they responsibly completed all presentations. They explained their reasons for selecting the social issues, provided insights into the current situation, and proposed possible solutions.

Physical Education



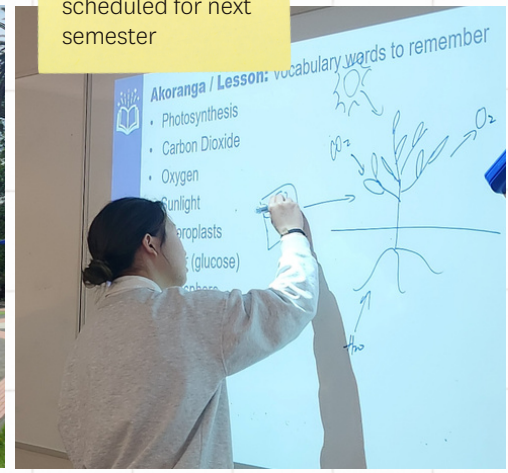
PE classes take place at the YMCA gym, just a 5-minute walk from school, every Friday afternoon. This semester, students are learning basketball, with scores given for ball adaptation, dribbling, passing, and shooting. Since we have students who've never touched a basketball and others who already enjoy the game, we divided them into three groups. Beginners paired up to practice bouncing and passing the ball. Now, even those new to basketball are having a blast and participating with enthusiasm!

More sports...

Badminton, volleyball, and netball are scheduled for next semester



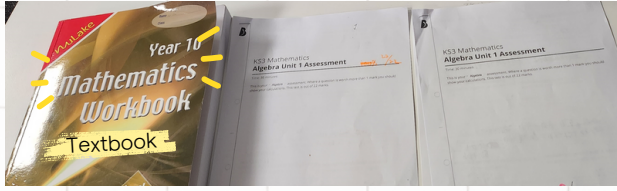
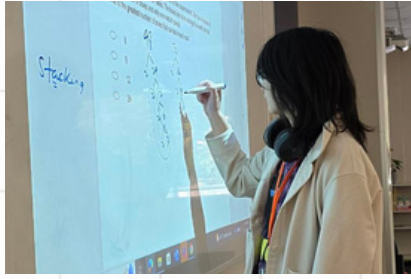
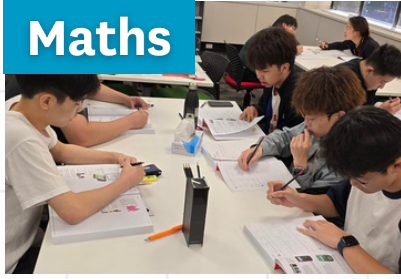
Biology



Biology class is anything but traditional. We headed to Myers Park, a large park behind the campus, for a practical experiment. Students observed plants they found interesting, used apps for information, and documented their findings with notes and drawings. Two weeks after, they'll be presenting about the plants they've explored.

To study biology, students need to know the words in English. Ve is an excellent student in our PLP class, and she is explaining all the words she learned by drawing pictures for everyone.

Maths



In Maths class, students actively participate in various activities like board games, quizzes, and textbook exercises. They've covered topics like shapes, lines, and equations, and are now preparing to study Statistics up to the sixth-grade level. Many find this class surprisingly enjoyable, and Statistics is a new topic for them!

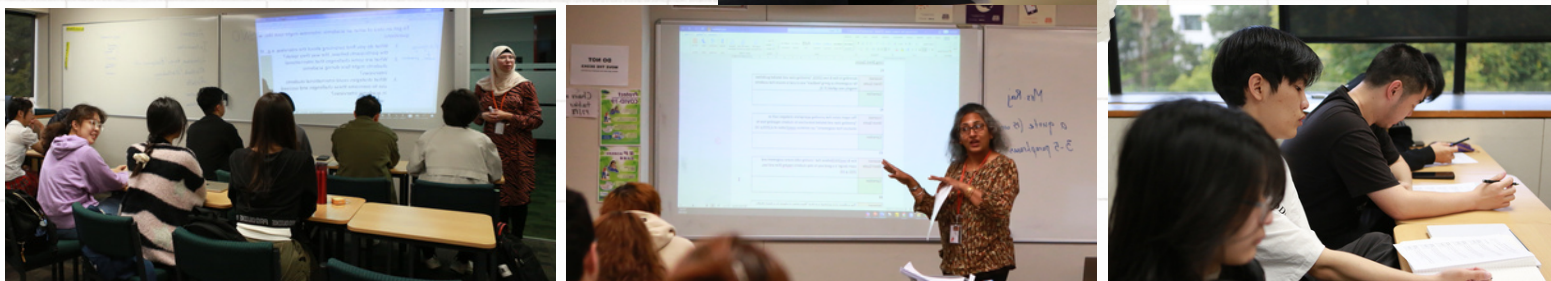


Next time...

Visiting Auckland Museum and going on a Yachting trip



Certificate in Foundation Course Class Experience



PLP students joined the classes in the Certificate of Foundation Studies programmes today, focusing on EAP (English for Academic Purposes). PLP students were allocated to seven different classes, engaging in various activities such as mock tests and peer grading sessions. They seamlessly integrated into the classes, supported by the older Foundation students. In the next few days, PLP students will continue to participate in Foundation classes of different subjects. This experience will provide PLP students with exposure to structured academic timetables and settings, fostering confidence in their participation.

Lunchtime



During lunchtime, students have various options. While some bring their own packed lunches from Home Stay, others can enjoy affordable offerings from the canteen on campus, such as sushi, donburi, and sandwiches. The student kitchen is next to the library, where students can watch or stream content, do homework, or borrow books as they wish. Of course, there are also university libraries and public libraries within the city where students can go. Our students belong to the Auckland Central Library, a short walk from campus.