



UP TO \$3000

SCHOLARSHIPS AVAILABLE

**MAKE A
DIFFERENCE
WITH MEDICINES**

Most pharmacists employ pharmacy technicians to assist them with the dispensing of prescription medicines. Pharmacy technicians always work under the supervision of a pharmacist. By law only pharmacists and pharmacy technicians can dispense prescription medicines in a pharmacy. Pharmacy technicians work in community pharmacies and pharmacy departments in hospitals. They are also employed in other pharmaceutical companies and pharmaceutical wholesalers.

WHAT DOES A PHARMACY TECHNICIAN DO?

Entering prescription details in the computer

Assisting the pharmacist in the preparation of prescriptions.

Maintaining the dispensary, including fixtures and fittings, packaging and dispensing equipment.

Preparing labels and dispensing the medicine

Preparing invoices, receipts, letters, memos and general filing, answering the pharmacy phone and receiving and sending electronic communications.

Checking stock levels of medicines and preparing and placing orders for new stock.

Processing of prescriptions and patient records, including preparing prescription batches for payment.



Employability

Graduates of this programme will have the knowledge, skills, attitudes and behaviours required to work in a range of dispensary related roles including those in community, hospital, industrial, and educational settings in pharmacy.

The opportunity to gain work as a pharmacy technician is high because:

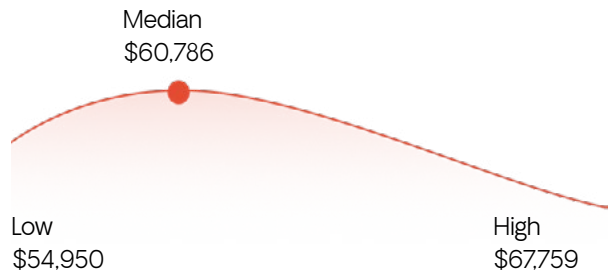
- an ageing population which means an increased demand for health care of all types
- turnover is high as pharmacy technicians often move into careers in community health or in sales for drug companies
- pharmacy technicians are taking on some tasks that used to be performed by pharmacists.¹

1. According to the Census, 2,418 pharmacy technicians worked in New Zealand in 2018

How much does a Pharmacy technician make in New Zealand?

\$60,786 / Annual

The average pharmacy technician salary in New Zealand is **\$60,786** per year or **\$31.17** per hour. Entry-level positions start at **\$54,950** per year, while most experienced workers make up to **\$67,759** per year.



Benifits of studying Pharmacy with NZMA



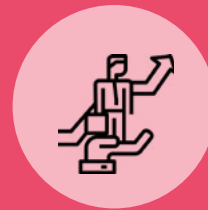
Paid internship guaranteed*



Industry Networking Established



Internship throughout the programme



Career Navigator Service

* After you have been with us for 13 weeks of study you will get a guaranteed interview with Chemist Warehouse, New Zealand's fastest growing pharmacy, for part-time job opportunities.





"I actually started my study with another college before, but the pharmacy I was employed with also had Pharmacist Interns, so it was hard to get support. I decided to study full-time with NZMA, which also meant I would qualify much faster. NZMA teach 'best practice' so I learned the right way to do things – and the reasons why we do things this way. I also really enjoyed learning in-depth about medicines. I have been working at Parkside Pharmacy in Auckland, as a senior technician since I graduated a year ago."

— Christine Dejando, NZMA Pharmacy Technician Graduate

PHARMACY TECHNICIAN PROGRAMMES

New Zealand Certificate in Pharmacy (Introduction to Pharmacy Practice) (Level 3)

New Zealand Certificate in Pharmacy (Pharmacy Technician) (Level 5)

Overview

The Pharmacy industry is dynamic, exciting and there are many job opportunities for qualified Pharmacy Technicians. You can play a key role in helping patients feel better and get well as fast as possible.

Our Pharmacy Technician course gives you practical learning on campus and will teach you all the key skills and pharmaceutical knowledge you need to start your career.

During this course you will learn everything you need to know to become a Pharmacy Technician. You'll learn how to provide accurate health advice to customers and your community.

What You Will Learn

Pharmacy technician course L3

Duration: 13 weeks (Including 2 weeks paid internship)

Courses:

- Professionalism, ethics, and effective communication
- Legislation in retail pharmacy workplace
- Retail pharmacy customer care and advice
- First Aid
- Retail operations: support, calculations, and technology

Pharmacy technician course L5

Duration: 47 weeks (Including 6 weeks paid internship)

Courses:

- Professional Practice 1
- Dispensing 1
- Dispensing 1A
- Patient Care 1
- Professional Practice 2
- Anatomy & Physiology
- Dispensing 2
- Patient Care 2

Course Information

Programme name	INTRODUCTION TO PHARMACY PRACTICE (LEVEL 3)	CERTIFICATE IN PHARMACY TECHNICIAN (LEVEL 5)
Tuition fees	\$6,000 NZD	\$24,000 NZD
Course Related Costs	\$220 NZD	\$780 NZD
Duration	13 weeks	47 weeks
Internship	2 weeks at a pharmacy provider	6 weeks fulltime paid internship
Campus	Auckland, Hamilton, Christchurch	Auckland, Hamilton, Christchurch
Entry Requirement - age	Must be at least 18	Must be at least 18
Entry Requirement - Academic	NCEA Level 2 or be able to demonstrate equivalent skills and knowledge.	Health related certificate Level 3 or at least 6 months relevant work experience or equivalent
Entry Requirement - English	IELTS 5.0 (General or Academic) with no band lower than 5.5 or equivalences approved by NZQA	IELTS 6.0 (Academic) with no band lower than 5.5 or equivalences approved by NZQA
Entry Requirement - Other	Interview will be required	Interview will be required

For the next intake date, please check our website at www.nzma.ac.nz/courses/pharmacy-overview



Find out more at
nzma.ac.nz