



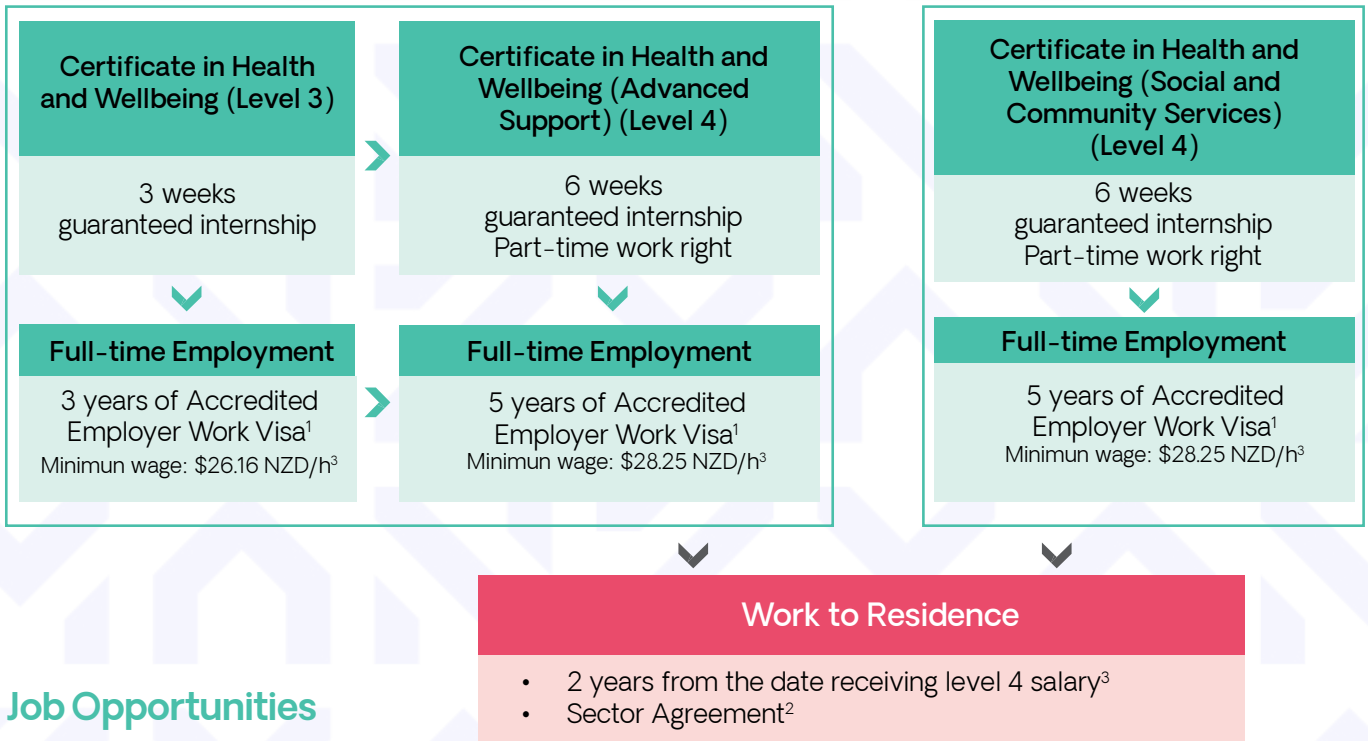
UP TO \$2500

SCHOLARSHIPS AVAILABLE

ARE YOU A NATURAL CARER?

Health support workers are sometimes also called caregivers community care workers or healthcare assistants. They provide assistance, support and care to aged and disabled people in their homes, in residential facilities and hospitals. Health support workers work under the direction of a regulated health practitioner such as a nurse or a doctor.

New Zealand Healthcare Pathway



Job Opportunities

- Aged caregiver
- Residential caregiver
- Youth work
- Family violence support
- Refugee support
- Accessibility/disability support
- Health and wellbeing mentor or officer
- Mental health and addictions support
- Nurse aide
- Personal care assistant

¹To find more about Accredited Employer Work Visa, go to <https://www.immigration.govt.nz/new-zealand-visas/visas/visa/accredited-employer-work-visa>

²To find more about Sector Agreement, go to <https://www.immigration.govt.nz/employ-migrants/new-employer-accreditation-and-work-visa/passing-the-job-check/sector-agreements-and-hiring-migrants-on-an-aewv>

³To find more about Pay Equity, go to [health.govt.nz/new-zealand-health-system/pay-equity-settlements/care-and-support-workers-pay-equity-settlement/support-workers-minimum-wage-rates-update](https://www.health.govt.nz/new-zealand-health-system/pay-equity-settlements/care-and-support-workers-pay-equity-settlement/support-workers-minimum-wage-rates-update)

Employability

Employment opportunities for healthcare support workers are good due to increasing demand for their services from an ageing population. Work opportunities can be found in both the public and the private sectors.

Chances of getting a job as a support worker are good due to:

- an ageing population, which means an increased demand for health care of all types
- an increase in long-term conditions such as diabetes that put extra demand on services
- a shift to pharmacists treating minor ailments, doing tests and vaccinations, prescribing some medicine and doing health checks.

Find out more at careers.govt.nz

To find out more about support workers' minimum wage, go to health.govt.nz/new-zealand-health-system/pay-equity-settlements/care-and-support-workers-pay-equity-settlement/support-workers-minimum-wage-rates-update

Support Workers' Minimum Wage

In June 2022 the Government amended the Support Workers (Pay Equity) Settlements Act 2017 to provide a minimum wage rate adjustment for these workers to apply from 1 July 2022 and to maintain the training commitment and other provisions of the legislation.

Support workers' minimum wage rates from 1 July 2022 can be found in Schedule 2 of the Support Workers (Pay Equity) Settlements Act 2017. The support worker minimum wage rates from 1 July 2022 are listed below

Pay band	1 Jul 2022 to 31 Dec 2023
L0	\$22.49
L2	\$24.06
L3	\$26.16
L4	\$28.25

Benefits of studying Healthcare in New Zealand

Employability



Industry Partnership Connections



Good Job Opportunity:
High demanded occupation



Pay Equity

Visa



Care Workforce
- Work to Residence Visa



Sector Agreement
(Immigration New Zealand)

Campuses

1. Auckland - Central
2. Auckland - Sylvia Park
3. Auckland - Manukau
4. Hamilton
5. Wellington - Porirua
6. Christchurch



“I would say that NZMA is a lovely place and environment, which is very welcoming. They teach you what you need to know and more. They get you the qualifications you need. They’re so helpful. It’s a great environment to be around. This place is pretty special. I’ve been here for over a year. I feel at home here, this place is an amazing place that gives off a really cool vibe.”

——Jannet Singh, NZMA level 4 student

Overview

CERTIFICATE IN HEALTH AND WELLBEING LEVEL 3 AND 4

CERTIFICATE IN HEALTH AND WELLBEING (COMMUNITY & MENTAL HEALTH) LEVEL 3 - 20 WEEKS

Pay Equity: \$26.16
(From July 2022)

The NZ Certificate in Health and Wellbeing (Support Work) [Level 3] is a programme which offers stimulating studies and provides a pathway to a career in many aspects of health care and community support in roles such as care associate, rest home and/or residential community support staff.

WORK RIGHT

- 3 weeks of paid or unpaid guaranteed internship

CERTIFICATE IN HEALTH AND WELLBEING (ADVANCED SUPPORT) LEVEL 4 - 33 WEEKS

Pay Equity: \$28.25
(From July 2022)

The NZ Certificate in Health and Wellbeing (Advanced Care and Support) will enable you to develop the knowledge and skills to maintain a safe work environment. Be an active team member and behave in a professional manner within a health and wellbeing context.

WORK RIGHT

- 6 weeks of paid or unpaid guaranteed internship
- 20 hours per week work permit during semesters and fulltime during the scheduled vacations

CERTIFICATE IN HEALTH AND WELLBEING (SOCIAL & COMMUNITY SERVICES) LEVEL 4 - 33 WEEKS

Pay Equity: \$28.25
(From July 2022)

To prepare employment as support workers in the health and wellbeing sector. On completion of the programme, The graduates will have the skills, knowledge and behaviours required to work alongside people, family and/or whanau accessing social and community services and be capable of working in a self-managing capacity under broad guidance.

WORK RIGHT

- 6 weeks of paid or unpaid guaranteed internship
- 20 hours per week work permit during semesters and fulltime during the scheduled vacations

CHOOSE ONE OF THESE STRANDS

- Social and Community Health
- Mental Health and Addiction

Course Information

Programme type	CERTIFICATE IN HEALTH AND WELLBEING (SUPPORT WORK) (LEVEL 3)	CERTIFICATE IN HEALTH AND WELLBEING (ADVANCED SUPPORT) (LEVEL 4)	CERTIFICATE IN HEALTH AND WELLBEING (SOCIAL & COMMUNITY SERVICES) (LEVEL 4)
Tuition fees	\$8,000 NZD	\$16,000 NZD	\$19,500 NZD
Course Related Costs	\$800 NZD	\$900 NZD	\$500 NZD
Duration	20 weeks	33 weeks	33 weeks
Internship	3 weeks - paid or unpaid full time	6 weeks - paid or unpaid full time	6 weeks - paid or unpaid full time
Work Right	No work right, but possible during internship	20 hours per week during study and full time during scheduled vacations	20 hours per week during study and full time during scheduled vacations
Campus	Auckland, Hamilton, Wellington, Christchurch	Auckland, Hamilton	Auckland, Hamilton, Wellington, Christchurch
Entry Requirement - Academic	N/A	Completed relevant certificate of level 3 or 6 months relevant work experience	NCEA level 2 (Year 12) completion equivalent (**NO relevant work experience or Level 3 required)
Entry Requirement - English	IELTS 5.0 (General/Academic) with no band lower than 5 or equivalences approved by NZQA	IELTS 5.5 (General/Academic) with no band lower than 5.0 or equivalences approved by NZQA	IELTS 5.5 (General/Academic) with no band lower than 5.0 or equivalences approved by NZQA
Entry Requirement - Other	Police Clearance Certificate from a home country and New Zealand Police Background Check required before any practical experience at a health care provider after the course starts	Police Clearance Certificate from a home country and New Zealand Police Background Check required before any practical experience at a health care provider after the course starts	Police Clearance Certificate from a home country and New Zealand Police Background Check required before any practical experience at a health care provider after the course starts

For the next intake date, please check our website at <https://www.nzma.ac.nz/courses/health-overview>



Find out more at
[nzma.ac.nz](https://www.nzma.ac.nz)