



2023 Vocational Courses Guide

International Student



Study in
New Zealand



Contents

UP Education - An exceptional learning community	3
New Zealand: a special place to start a career	4
Our offering	6
Where we are in New Zeland	8
English language requirements	10
NZMA	11
The Culinary Collective (TCC)	13
NZMA campuses for international students	14
NZMA career support	15
NZMA & TCC Pathway Chart	16
New Zealand Institute of Sport (NZIS)	18
NZIS Pathway Chart	19
Yoobee College of Creative Innovation	20
Yoobee Pathway Chart	22
New Zealand School of Tourism (NZST)	24
NZST Pathway Chart	25
Elite School of Beauty & Spa	26
Cut Above Academy	27
Elite & Cut Above Pathway Chart	28
Study in Auckland	30
Study in Hamilton	32
Study in Wellington	33
Study in Christchurch	34
Useful Links & Emails	35

An exceptional learning community



26,000+

students educated every year
in New Zealand and Australia.
(80% domestic learners and
20% international)

27+

years academic experience
with 12 Vocational Education
Training & Higher Education,
and 6 leading NZ/Australian
University Partnerships.

2,000+

people with a passion for
amplifying potential.
We're largest private tertiary
education business in New
Zealand.

New Zealand: a special place to start a career

2nd most peaceful country in the world

The Global Peace Index 2021

1st least corrupt country in the world

Transparency International
Corruption Perception Index 2021

2nd in the world for Human Rights

Fraser Institute Worldwide Index of Human Freedom, 2021

3rd for Government Transparency

International Budget Partnership,
Open Budget Survey - 2021 Global Report

3rd best country in the world for education

Economist Intelligence Unit
Worldwide Educating for the Future Index 2019

4th Freest economy in the world and 2nd in the Asia-Pacific region

2022 Index of Economic Freedom



All our registered PTEs
are NZQA Category One
providers



Study with NZMA to get a career in hospitality, trades, pharmacy, aged care or early childhood education.



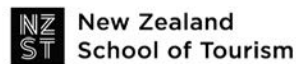
New Zealand's Leading Dedicated Cookery and Hospitality School. Growing the next generation of chefs, bartenders, baristas and hospitality leaders.



Healthcare Academy of New Zealand is dedicated to educating and connecting the next generation of aspiring healthcare professionals in NZ by providing a supportive, relevant and seamless journey from class to clinic to career to community.



Focused on human performance and sport management - we prepare our graduates for a career in the world of sport, recreation and exercise.



Study with NZST and get into incredible internships during your study, resulting in an exciting career in the travel and tourism industry.



We are the largest provider of Beauty and Spa therapy training in New Zealand.



Barbering, Hair, make up and SFX make up. Graduates get into fun, creative careers within the beauty industry.



New Zealand's largest specialist creative and IT college produces graduates in animation, film, emerging technologies, game development, graphic design and more.

Our offering

Delivering Bachelor Degrees, Masters, Diplomas and Certificates, our offering include Creative Industries, Information Technology, Animation, Digital Marketing, Culinary Arts, Hospitality, Tourism, Beauty, Health, Trades and Services, Early Childhood Education and Business Management.

All UP Education Private Training Establishments are NZQA Category 1 accredited; the highest accreditation awarded to training providers in New Zealand. With an unwavering focus on learner outcomes, we consistently deliver industry-leading qualification completion rates.



Fit for industry

Each of our campuses is designed to reflect the specific industry environments found in the workplace, from training bars, restaurants and commercial kitchens, to construction workshops. From film production facilities to a Boeing 737 aircraft cabin trainer, we take you right to the heart of your chosen industry.



Employment is the ultimate goal

To help launch our students into the right career, contemporary employment skills are embedded in our courses every step of the way. Opportunities for real-life work experience are an important part of many of our courses, and some include paid internships.



Tutors with real-life industry experience

For learning real-life, up to date skills, the best tutors are people who come directly from the industry. Our teaching staff are real-world professionals – enthusiastic experts who are excited to share their knowledge and skill with our students.



Small classes

Our class environment is the signature feature of all UP Education colleges. Small class sizes ensure our students learn with dedicated attention and feel supported.

We've designed our learning experiences to be stimulating, effective and fun, so our students get to know their classmates well in a comfortable social atmosphere.



Hands-on, practical training

At each of our colleges, we provide hands-on, practical experience. We design our courses with industry experts, so our students learn has a direct connection and practical application to their chosen career. That means our students graduate with the skills needed to walk straight into the workplace.

Where we are in New Zealand

Registered PTEs



NEW ZEALAND.COM
Licence No.100751

NZMA



NZMA Family including:

- » The Culinary Collective
- » NZ Institute of Sport
- » NZMA

NZMA is a part of UP Education.
New Zealand Management Academies
Limited - NZQA Category 1 provider
that awards the qualifications.



YOOBEE COLLEGE OF CREATIVE INNOVATION

New Zealand School of Tourism

Elite
School of Beauty & Spa
cut above academy


Healthcare Academy
of New Zealand

Yoobee Colleges Limited is a part of UP Education. Yoobee Colleges Limited - NZQA Category 1 provider that awards the qualifications.

Yoobee Colleges Limited including:

- » Yoobee College of Creative Innovation
- » New Zealand School of Tourism
- » Cut Above Academy
- » Elite School of Beauty & Spa
- » Healthcare Academy of New Zealand*

*Opens 2023

The Silver Fern is one of New Zealand's most recognised, long-standing, and respected national symbols. A licence to bear the FernMark is a formal government-level tick of approval that the education experience UP Education providers is aligned with New Zealand's education regulations and national brand reputation.

Yoobee Colleges Limited (Licence number NZFM100750) and New Zealand Management Academies Limited (Licence number NZFM100751), including the collective of providers under each entity listed above, have been granted the FernMark Licence by New Zealand Government- showcasing the trust and credibility of the academic offering provides to its learners.

Scan the QR codes below to find out more about FernMark Licence Programme



English language requirements

Internationally Recognised English Proficiency Outcomes for International Students

Internationally recognised proficiency tests	Programme Level and required outcome ¹				
	Certificate at Level 3	Certificate at Level 4	Certificate or Diploma at Level 5	Certificate or Diploma at Level 6 Diploma or degree at Level 7 Graduate Certificate or Diploma at Level 7	Post-graduate Diploma or Post-graduate Certificate at Level 8 Bachelor Honours Degree at Level 8 Master's Degree at Level 9 Doctoral Degree at Level 10
IELTS test ²	General or Academic score of 5 with no band score lower than 5	General or Academic score of 5.5 with no band score lower than 5	Academic score of 5.5 with no band score lower than 5	Academic score of 6 with no band score lower than 5.5	Academic score of 6.5 with no band score lower than 6
TOEFL Internet-based test (iBT) ²	Score of 35 (with a writing score of 14)	Score of 46 (with a writing score of 14)	Score of 46 (with a writing score of 14)	Score of 60 (with a writing score of 18)	Score of 79 (with a writing score of 21)
Cambridge English Qualifications ²	B2 First or B2 First for Schools with a score of 154. No less than 154 in each skill	B2 First or B2 First for schools with a score of 162. No less than 154 in each skill	B2 First or B2 First for schools with a score of 162. No less than 154 in each skill	B2 First, or B2 First for schools, or C1 Advanced, or C2 Proficiency with a score of 169. No less than 162 in each skill	C1 Advanced or C2 Proficiency with a score of 176. No less than 169 in each skill
OET ²	Minimum of Grade C or 200 in all sub-tests	Minimum of Grade C or 200 in all sub-tests	Minimum of Grade C or 200 in all sub-tests	Minimum of Grade C or 200 in all sub-tests	Minimum of Grade C+ or 300 in all sub-tests
NZCEL ² a) Expiring b) Current	a) Level 3 (General) or (Workplace) b) Level 3 (General)	a) Level 3 (Academic) b) Level 3 (Applied)	a) Level 4 (General) or (Workplace) b) Level 4 (General) or (Employment)	a) Level 4 (Academic) b) Level 4 (Academic)	a) Level 5 (Academic) or (Professional) b) Level 5
Pearson Test of English (Academic) ²	PTE (Academic) score of 36 with no band score lower than 36	PTE (Academic) score of 42 with no band score lower than 36	PTE (Academic) score of 42 with no band score lower than 36	PTE (Academic) score of 50 with no band score lower than 42	PTE (Academic) score of 58 with no band score lower than 50
LanguageCert ²	B1 Achiever International ESOL Written (LRW) PASS with no less than 25/50 in each skill and Spoken (S) PASS	B2 Communicator International ESOL Written (LRW) PASS with no less than 25/50 in each skill and Spoken (S) PASS	B2 Communicator International ESOL Written (LRW) HIGH PASS with no less than 25/50 in each skill and Spoken (S) PASS	C1 Expert International ESOL Written (LRW) PASS with no less than 25/50 in each skill and Spoken (S) PASS	C1 Expert International ESOL Written (LRW) HIGH PASS with no less than 25/50 in each skill and Spoken (S) PASS or C2 Mastery International ESOL Written (LRW) PASS with no less than 25/50 in each skill and Spoken (S) PASS
Trinity ISE ²	ISE I with no less than distinction in any band	ISE II with no less than pass in any band	ISE II with no less than merit in any band	ISE II with no less than distinction in any band	ISE III with no less than pass in any band

Source: nzqa.govt.nz/about-us/our-role/legislation/nzqa-rules/nzqf-related-rules/the-table/

¹The listed outcomes represent the minimum scores or grades for each test or qualification that qualify a student for enrolment at each programme level.

Students with higher scores or grades than required for a particular programme level may still enrol at that level. Where the entry requirements for a programme are for a higher English proficiency outcome than is listed in the relevant row of the Table for the programme level in which the student is being enrolled, the student must meet that higher level.

²All test scores must be from a single report except for TOEFL iBT, where the test scores must be from a single report for a single test date and the My best Scores option must not be used. LanguageCert where the test scores must be from a single report for Written (LRW) and a separate individual report for Spoken (S).



NZMA

80% of students complete their course*

40% of student are Māori or Pasifika, making our campuses vibrant and culturally diverse*

8/10 student would recommend NZMA*

4200 students placed into job opportunities*

*Statistics based on NZMA student enrolment and graduate data, research and 2020 media survey (across domestic and international students)



Small classes sizes

Friendly, welcoming campuses



Caring tutors with real industry experience

Fun classes with lots of support



Industry-based training that gives you real skills

We'll help get you work-ready too



NZMA, is a category one provider and the largest private tertiary group in New Zealand.

LEARN IN SMALL CLASSES

FUN WAYS TO LEARN

JOB-SEEKING SUPPORT

Why study at NZMA?

- » NZMA offers far more than education: **We give hope. Inspiration. And motivation.**
- » At NZMA we want to make your time in New Zealand unforgettable. We have a range of courses available to international students, which are all taught by **industry-experienced tutors.**
- » Whether you know what you want to study, or have no idea, we'll help you with the **tools and support** you need to start your journey.
- » We have **smaller classes**, which gives you more one-on-one time with your tutor - and more chance to get to know your classmates. And you'll find the tutors can adapt the way they teach to suit your learning style.
- » It's things like this that make many students **big fans of NZMA.** Drop in to a campus, see the smiling faces and see why NZMA could be the place for you.

New Zealand Management Academies Ltd is certified as an official New Zealand FernMark Licensee and ambassador for the New Zealand Story. Scan the QR Code to find out more.





	NZQA COURSE TITLE	NZQA LEVEL	QUALIFICATION	DURATION	CAMPUS	TUITION FEE	RESOURCE FEE
HOSPITALITY	Diploma in Hospitality Management	5	New Zealand Diploma in Hospitality Management (Level 5)	35 weeks	Auckland (Central, Sylvia Park), Hamilton	\$17,900	\$2,500
	Diploma in Hospitality Management	6	New Zealand Diploma in Hospitality Management (Level 6)	40 weeks (20 weeks internship)	Auckland (Central, Sylvia Park), Hamilton	\$17,900	\$1,500
	Diploma in Hospitality Management (Pathway to AUT Bachelor of International Hospitality Management Available)	5 + 6	New Zealand Diploma in Hospitality Management (Level 6)	2 years	Auckland (Central, Sylvia Park), Hamilton	Total: \$28,8000 (Year 1: 17,900 Year 2: 10,900)	Total: \$4,000 (Year 1: \$2,500 Year 2: \$1,500)
HEALTHCARE	Certificate in Health and Wellbeing (Support Work)	3	New Zealand Certificate in Health and Wellbeing (Support Work) (Level 3)	20 weeks (including 100 hours internship)	Auckland, Christchurch, Hamilton, Wellington	\$7,700	\$800
	Certificate in Health and Wellbeing (Advanced Support)	4	New Zealand Certificate in Health and Wellbeing (Level 4) (Advanced Support)	33 weeks (including 200 hours internship)	Auckland (Central, Manukau), Hamilton	\$15,500	\$900
	Certificate in Health and Wellbeing (Advanced Support)	3 + 4	New Zealand Certificate in Health and Wellbeing (Level 4) (Advanced Support)	1.5 years	Auckland, Christchurch, Hamilton, Wellington	Total: 21,650 (Year 1: \$7,700 Year 2: \$13,950)	Total: \$1,500 (Year 1: \$800 Year 2: \$700)
	Certificate in Health and Wellbeing - (Social & Community Services)	4	New Zealand Certificate in Health and Wellbeing (Social and Community Services) (Level 4)	33 weeks (including 200 hours iinternship)	Auckland, Hamilton	\$18,000	\$500
PHARMACY	Introduction to Pharmacy Practice	3	NZ Certificate in Pharmacy (Introduction to Pharmacy Practice) (Level 3)	13 weeks	Auckland (Central, Sylvia Park), Christchurch, Hamilton	\$5,400	\$220
	Certificate in Pharmacy Technician	5	New Zealand Certificate in Pharmacy (Pharmacy Technician) (Level 5)	47 weeks (including 320 hours internship)	Auckland (Central, Sylvia Park), Christchurch, Hamilton	\$22,600	\$780
EARLY CHILDHOOD EDUCATION	Certificate in Early Childhood and Care	4	New Zealand Certificate in Early Childhood and Care (Level 4)	19 weeks (4 weeks internship)	Auckland Manukau	\$11,000	\$1,500
	Diploma in Early Childhood Education	5	New Zealand Diploma in Early Childhood Education and Care (Level 5)	40 weeks (7 weeks internship)	Auckland Manukau	\$20,950	\$1,500
TRADES	Certificate in Carpentry Trade Skills	3	New Zealand Certificate in Construction Trade Skills (Level 3) (Carpentry strand)	32 weeks	Auckland Trades South	\$20,500	\$1,000
	Certificate in Electrical Engineering	3	New Zealand Certificate in Electrical Pre-Trade (Level 3)	35 weeks	Auckland Trades South	\$20,500	\$1,000
	Certificate in Plumbing, Gasfitting and Drainlaying	3	New Zealand Certificate in Plumbing, Gasfitting and Drainlaying (Pre-apprenticeship) (Level 3)	20 weeks	Auckland Trades South	\$9,800	\$700
	Certificate in Trade Skills with strand in Paint and Plaster	3	New Zealand Certificate in Construction Trade Skills (Level 3) with strand Allied Trades	19 weeks	Auckland Trades South	\$9,800	\$700

Note: International Tuition and Resource fees are in New Zealand Dollars and include GST. Fees are subject to change and UP Education reserves the right to change this information at any time. Courses are delivered by NZMA, which is one of the trading names for the registered PTE New Zealand Mangement Academies Limited (NZQA Category One Private Training Establishment provider). Your enrolment is with NZMA Ltd and your qualification is issued by NZMA.

Please refer to our website for the most updated information nzma.ac.nz



	NZQA COURSE TITLE	NZQA LEVEL	QUALIFICATION	DURATION	CAMPUS	TUITION FEE	RESOURCE FEE
BAKERY	Certificate in Baking (Generalist)	4	New Zealand Certificate in Baking (Generalist) (Level 4)	35 weeks (5 weeks internship)	Auckland (Central, Sylvia Park), Hamilton	\$17,900	\$2,500
	Diploma in Cookery (Advanced) - Patisserie Strand	5	New Zealand Diploma in Cookery (Advanced) (Level 5) (Patisserie Strand)	35 weeks (5 weeks internship)	Auckland (Central, Sylvia Park), Hamilton	\$17,900	\$2,500
	Diploma in Cookery (Advanced) - Patisserie Strand	4 + 5	New Zealand Diploma in Cookery (Advanced) (Level 5) (Patisserie Strand)	2 years	Auckland (Central, Sylvia Park), Hamilton	Total: \$28,800 (Year 1: \$17,900 Year 2: \$10,900)	Total: \$4,000 (Year 1: \$2,500 Year 2: \$1,500)
	Diploma in Culinary Management	6	New Zealand Diploma in Hospitality Management (Level 6)	40 weeks (20 weeks internship)	Auckland (Central, Sylvia Park), Hamilton	\$17,900	\$2,500
	Diploma in Culinary Management	5 + 6	New Zealand Diploma in Hospitality Management (Level 6)	2 years	Auckland (Central, Sylvia Park), Hamilton	Total: \$28,800 (Year 1: \$17,900 Year 2: \$10,900)	Total: \$4,000 (Year 1: \$2,500 Year 2: \$1,500)
COOKERY	Certificate in Cookery	4	New Zealand Certificate in Cookery (Level 4)	35 weeks (5 weeks internship)	Auckland (Central, Sylvia Park), Hamilton	\$17,900	\$2,500
	Diploma in Cookery (Advanced) - Cookery Strand	5	New Zealand Diploma in Cookery (Advanced) (Level 5) (Cookery Strand)	35 weeks (5 weeks internship)	Auckland (Central, Sylvia Park), Hamilton	\$17,900	\$2,500
	Diploma in Cookery (Advanced) - Cookery Strand	4 + 5	New Zealand Diploma in Cookery (Advanced) (Level 5) (Cookery Strand)	2 years	Auckland (Central, Sylvia Park), Hamilton	Total: \$28,800 (Year 1: \$17,900 Year 2: \$10,900)	Total: \$4,000 (Year 1: \$2,500 Year 2: \$1,500)
	Diploma in Culinary Management	6	New Zealand Diploma in Hospitality Management (Level 6)	40 weeks (20 weeks internship)	Auckland (Central, Sylvia Park), Hamilton	\$17,900	\$2,500
	Diploma in Culinary Management (Pathway to AUT Bachelor of Arts - Culinary Arts Available)	5 + 6	New Zealand Diploma in Hospitality Management (Level 6)	2 years	Auckland (Central, Sylvia Park), Hamilton	Total: \$28,800 (Year 1: \$17,900 Year 2: \$10,900)	Total: \$4,000 (Year 1: \$2,500 Year 2: \$1,500)

Note: International Tuition and Resource fees are in New Zealand Dollars and include GST. Fees are subject to change and UP Education reserves the right to change this information at any time. Courses are delivered by The Culinary Collective, which is one of the trading names for the registered PTE New Zealand Management Academies Limited (NZQA Category One Private Training Establishment provider). Your enrolment is with NZMA Ltd and your qualification is issued by NZMA. Please refer to our website for the most updated information culinarycollective.co.nz

NZMA Campuses for international students

nzma.ac.nz Auckland

- **Auckland Central Campus**
100 Symonds Street, Grafton, Auckland 1010
- **Sylvia Park Campus**
56-60 Carbine Road, Mount Wellington, Auckland 1060
- **Trades South Campus**
807 Great South Road, Mount Wellington, Auckland 1060
- **Otahuhu Campus**
12-16 Gordon Road, Otahuhu, Auckland 1062
- **Manukau Campus**
621 Great South Road, Manukau, Auckland 2104

Hamilton

- **Hamilton Campus**
94 Tristram Street, Hamilton Central, Hamilton 3204

Christchurch

- **Christchurch Campus**
85 Peterborough Street, Christchurch Central,
Christchurch 8013

Wellington

- **Wellington Campus**
Wellington Railway Station, Level 1, 2 Bunny Street, Pipitea, Wellington 6011

NZMA Career Support

We have an NZMA Careers team at each campus to help you with everything you need to prepare you for work, and help find you work. Our Career and Employment navigators will help you with valuable job hunting skills, like CV writing and interview techniques, help you find part-time work while you study and full-time work once you graduate. Contact a Careers Advisor at careers@nzma.ac.nz

We have great partnerships with a variety of employers throughout New Zealand. We nurture these relationships and are proud to be working together to benefit the industries we love. You can find additional information on our website at nzma.ac.nz/why-choose-nzma/careers

Here are a few of the employers who have partnered with us.



"NZMA students bring with them a real sense of passion and drive for hospitality and catering into the workplace. They are an asset to our service. Our continued relationship with NZMA stands testament to the quality and standard of hospitality students engaged each year. This replicates into the directive of all the trainers, tutors and employment relations team that keep their finger on the pulse of industry trends and demands."

Josh Coll, Staffing Manager - Eden Park Catering



NZMA PATHWAY CHART



HOSPITALITY PATHWAY

Diploma in Hospitality Management (Level 5)
Duration: 35 weeks



Diploma in Hospitality Management (Level 6)
Duration: 40 weeks (20 weeks internship)



Bachelor of International Hospitality Management
(Major: Hospitality Management OR Hospitality Enterprise)

Up to 180 credits toward the 360 credits degree. Minimum additional 18 months.

Degree awarded by AUT

Seek employment with an accredited employer in New Zealand (most of the employers who offer paid internships are accredited employers) and if successful you may have the option to work for up to 3 years on the Accredited Employer Workplace Visa. For the most updated information of post study work visa in New Zealand, please refer to Immigration New Zealand official website at immigration.govt.nz/new-zealand-visas/options/study/working-during-after-your-study/staying-to-work-after-study

Certificate in Cookery (Level 4)
Duration: 35 weeks (5 weeks internship)



Diploma in Cookery (Advanced) - Cookery Strand (Level 5)
Duration: 35 weeks (5 weeks internship)



Diploma in Culinary Management (Level 6)
Duration: 40 weeks Includes a 20 week internship



Bachelor of Arts
(Major: Culinary Arts)

Up to 180 credits toward the 360 credits degree. Minimum additional 18 months.

Degree awarded by AUT

Certificate in Baking (Generalist)
Duration: 35 weeks (5 weeks internship)



CULINARY PATHWAY

L4

L5

L6

L7

PHARMACY PATHWAY

NZ Certificate in Pharmacy (Introduction to Pharmacy Practice) (Level 3)
Duration: 13 weeks

NZ Certificate in Pharmacy (Pharmacy Technician - Advanced) (Level 5)
Duration: 47 weeks including 320 hours internship

Career Opportunities:

You'll gain real world industry experience and complete 320 hours at a pharmacy provider as part of your training. Pharmacy technicians work in community pharmacies and pharmacy departments in hospitals. They are also employed in other pharmaceutical companies and pharmaceutical wholesalers representative.

HEALTHCARE PATHWAY

Certificate in Health and Wellbeing (Introduction) (Level 3)
Duration: 20 weeks including 100 hours internship

Certificate in Health and Wellbeing (Aged Care Support) (Level 4)
Duration: 33 weeks including 200 hours internship

Certificate in Health and Wellbeing (Social & Community Services) (Level 4)
Duration: 33 weeks including 200 hours internship

Career Opportunities:

You'll gain real world industry experience at a health care provider as part of your training. Healthcare assistants in a range of contexts including acute care, primary care, aged residential care and therapeutic programmes, disability, ACC support work.

EARLY CHILDHOOD EDUCATION PATHWAY

Certificate in Early Childhood Education and Care (Level 4)
Duration: 19 weeks (4 weeks of practical experience in an Early Childhood setting)

Diploma in Early Childhood Education and Care (Level 5)
Duration 40 weeks (7 weeks internship in an Early Childhood setting)

Career Opportunities:

The programme includes a practicum in an Early Childhood Centre which is an integral part of the course. Graduates of this qualification may be employed as a health care assistant, senior caregiver, senior health care assistant or senior support worker in hospices or specialised dementia units, aged residential care or home and community support settings.

CONSTRUCTION PATHWAY

Certificate in Carpentry Trade Skills (Level 3)
Duration: 32 weeks

NZ Certificate in Carpentry (Level 4) Apprenticeship

Certificate in Electrical Engineering (Level 3)
Duration: 35 weeks

NZ Certificate in Electrical Engineering (Level 4) Apprenticeship

Certificate in Plumbing, Gasfitting and Drainlaying (Level 3)
Duration: 20 weeks

NZ Certificate in Plumbing, drainlaying and Gasfitting (Level 4) Apprenticeship

Certificate in Trade Skills with strand in Paint and Plaster (Level 3)
Duration: 19 weeks

NZ Certificate in Paint and Plaster (Level 4) Apprenticeship

Career Opportunities:

Qualified Carpenter
Registered Electrician
Qualified Plumber
Qualified Plasterer or Painter

L3

L4

L5



**NEW ZEALAND
INSTITUTE OF SPORT**

Guided by **NZMA**



NZQA COURSE TITLE	NZQA LEVEL	QUALIFICATION	DURATION	CAMPUS	TUITION FEE	RESOURCE FEE
SPORTS MANAGEMENT						
Diploma in Sport, Recreation, & Performance	5	New Zealand Diploma in Sport, Recreation and Exercise (Multi-Sector) (Level 5)	40 weeks	Auckland (Central, Sylvia Park), Wellington, Christchurch	\$20,950	\$1,250
Diploma in Human Performance (Multi-Sector)	6	New Zealand Diploma in Sport, Recreation and Exercise (Multi-Sector) (Level 6)	40 weeks	Auckland (Central, Sylvia Park), Wellington, Christchurch	\$20,950	\$1,250
Diploma in Human Performance (Multi-Sector) (Pathway to University of Canterbury / University of Waikato / Manukau Institute of Technology / Victoria University Melbourne Australia Available)	5 + 6	New Zealand Diploma in Sport, Recreation and Exercise (Multi-Sector) (Level 6)	2 years	Auckland (Central, Sylvia Park), Wellington, Christchurch	Total: \$38,900 (Year 1: \$20,500 Year 2: \$18,400)	Total: \$2,000 (Year 1: \$1,250 Year 2: \$750)
PERSONAL TRAINING						
Health & Fitness Personal Trainer	4	New Zealand Certificate in Exercise (Level 4)	16 weeks	Auckland (Central, Sylvia Park), Wellington, Christchurch	\$10,500	\$1,000
Advanced Health and Fitness Coach	5	New Zealand Certificate in Exercise (Level 5)	16 weeks	Auckland (Central, Sylvia Park), Wellington, Christchurch	\$10,500	\$1,000

Note: International Tuition and Resource fees are in New Zealand Dollars and include GST. Fees are subject to change and UP Education reserves the right to change this information at any time. Courses are delivered by New Zealand Institute of Sport (NZIS) which is one of trading names for the registered PTE New Zealand Management Academies Limited (NZQA Category One Private Training Establishment provider). Your enrolment is with NZMA Ltd and your qualification is issued by NZMA.

Please refer to our website for the most updated information nzis.co.nz

NZIS PATHWAY CHART



YOU CREATE THE FUTURE



**Y003EE COLLEGE OF CREATIVE
INNOVATION**

COURSE TITLE	NZQA LEVEL	QUALIFICATION	DURATION	CAMPUS	TUITION FEE	RESOURCE FEE
Certificate in Creative Media	4	New Zealand Certificate in Digital Media and Design (Level 4)	19 weeks	Auckland City, Wellington, Christchurch	\$10,500	\$950
ANIMATION						
Diploma in Animation	5	New Zealand Diploma in Animation (Level 5)	40 weeks	Auckland City	\$20,500	\$2,000
New Zealand Diploma in Animation	6	New Zealand Diploma in Animation (Level 6)	40 weeks	Auckland City	\$20,500	\$2,000
Bachelor of Animation* (Additional Honours year)	7	Bachelor of Animation	3 years (additional 1 year for Honours)	Auckland City, Wellington, Christchurch	Year 1: \$21,500 Year 2: \$18,275 Year 3: \$18,275	Year 1: \$2,500 Year 2: \$2,500 Year 3: \$2,500
DESIGN						
Diploma in Digital Design (Web and Graphic Design)	5	New Zealand Diploma in Digital Media and Design (Level 5)	40 weeks	Auckland City, Wellington, Christchurch	\$20,500	\$2,000
Diploma in Creative Digital Design (Pathway to Victoria University of Wellington Available)	6	New Zealand Diploma in Digital Media and Design (Level 6)	40 weeks	Auckland City, Wellington, Christchurch	\$20,500	\$2,000
Diploma in Web and UX Design	6	New Zealand Diploma in Web Design and Production (Level 6)	40 weeks	Auckland City	\$20,500	\$2,000
DIGITAL INNOVATION						
Diploma in Creative Marketing	5	New Zealand Diploma in Digital Media and Design (Level 5)	32 weeks	Auckland City	\$20,500	\$2,000
Bachelor of Digital Innovation	7	Bachelor of Digital Innovation	3 years	Auckland City, Wellington, Christchurch	Year 1: \$21,500 Year 2: \$18,275 Year 3: \$18,275	Year 1: \$2,000 Year 2: \$2,000 Year 3: \$2,000
TECHNOLOGY						
Diploma in Software Development	6	New Zealand Diploma in Software Development (Level 6)	2 years	Auckland City, Wellington, Christchurch	Year 1: \$20,500 Year 2: \$17,425	Year 1: \$2,000 Year 2: \$2,000
Bachelor of Software Engineering	7	Bachelor of Software Engineering	3 years	Auckland City, Wellington, Christchurch	Year 1: \$21,500 Year 2: \$18,275 Year 3: \$18,275	Year 1: \$2,500 Year 2: \$2,500 Year 3: \$2,500
Master of Software Engineering	9	Master of Software Engineering	1/1.5 years	Auckland	\$32,000	\$2,000

COURSE TITLE	NZQA LEVEL	QUALIFICATION	DURATION	CAMPUS	TUITION FEE	RESOURCE FEE
FILM						
Film and TV Sets: Introduction to the Art Department	4	New Zealand Certificate in Arts and Design (Level 4)	19 weeks	South Seas Film School	\$10,500	\$950
Diploma in Film and Content Creation	5	New Zealand Diploma in Screen Production (Level 5)	40 weeks	South Seas Film School, Wellington, Christchurch	\$20,500	\$2,000
Diploma in Screen and Stage Acting	5	New Zealand Diploma in Drama (Level 5)	40 weeks	Auckland City	\$20,500	\$2,000
Diploma in Film and TV Production	6	New Zealand Diploma in Screen Production (Level 6)	40 weeks	South Seas Film School, Wellington, Christchurch	Year 1: \$20,500 Year 2: \$17,425	Year 1: \$2,000 Year 2: \$2,000
Diploma in Drama (Screen Acting)	6	New Zealand Diploma in Drama (Level 6)	2 years	South Seas Film School, Wellington, Christchurch	Year 1: \$20,500 Year 2: \$17,425	Year 1: \$2,000 Year 2: \$2,000

*If you are applying for Bachelor of Animation, we expect that you will have a portfolio to submit. Applicants need to provide at least 10 examples of work which may contain a variety of work such as animation, sketches, drawings, painting, mixed media, multimedia, photography, sculpture, creative writing, etc.

Note: International Tuition and Resource fees are in New Zealand Dollars and include GST. Fees are subject to change and UP Education reserves the right to change this information at any time. Courses are delivered by YooBee College of Creative Innovation, which is one of the trading names for the registered PTE YooBee Colleges Limited (NZQA Category One Private Training Establishment provider). Your enrolment is with YooBee Colleges Ltd and your qualification is issued by YooBee Colleges.

Please refer to our website for the most updated information yooBee.ac.nz

Study at YooBee College of Creative Innovation can take you just about anywhere. From launching rockets (Faculty of Technology) through to bringing superheroes to life (Faculty of Animation), the opportunities are endless. Here's a sampling of some of the world-class companies that have hired our graduates.

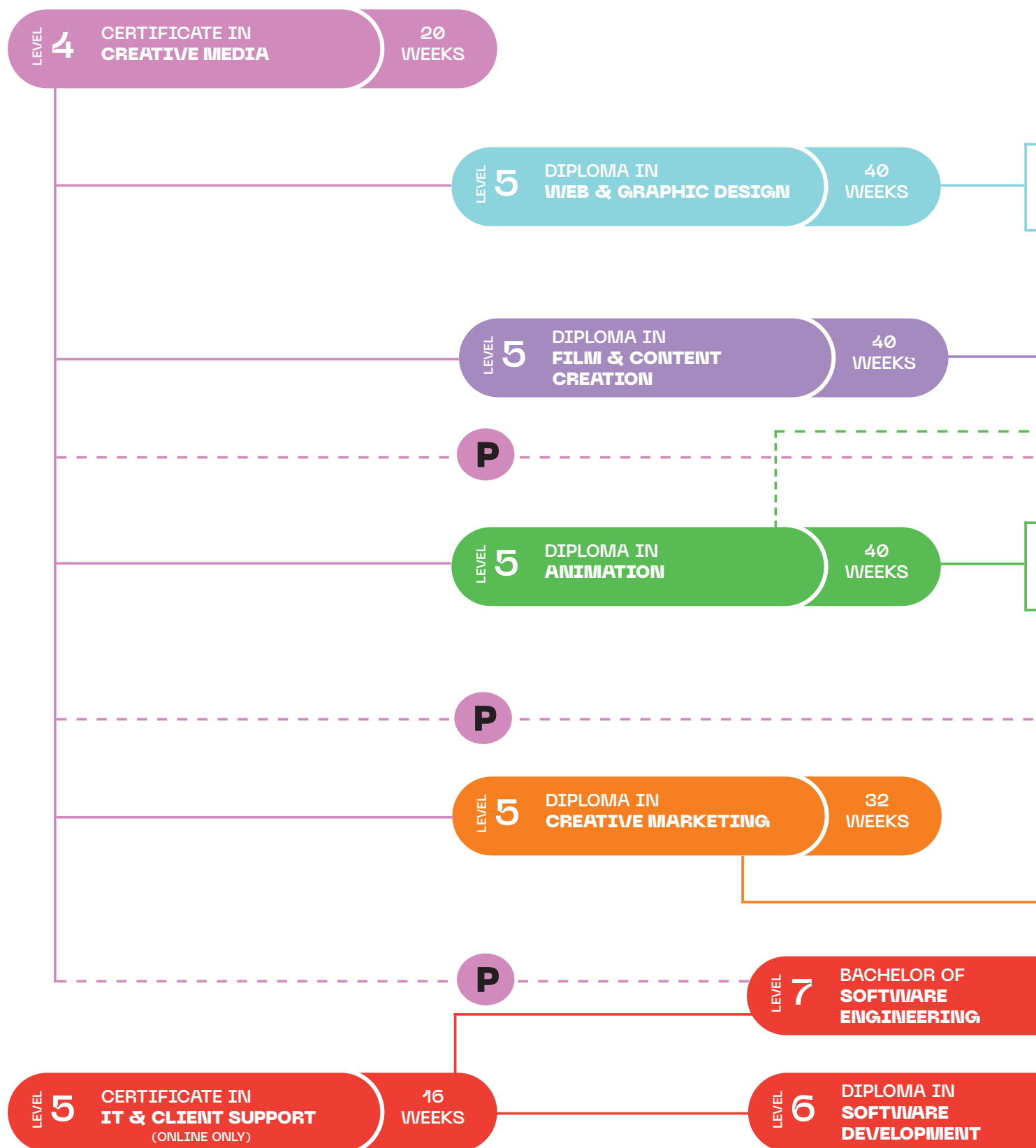


At YooBee we are proud to be the only New Zealand institution to offer 8-10 week virtual work experiences and externships with a range of international companies like Meta (Facebook), Snapchat, Hewlett Packard and Beats so you can get tech industry experience while you're still studying.



TECH PARTNERSHIPS







KEY

Portfolio and/or Entry Requirements Required



Direct Pathway

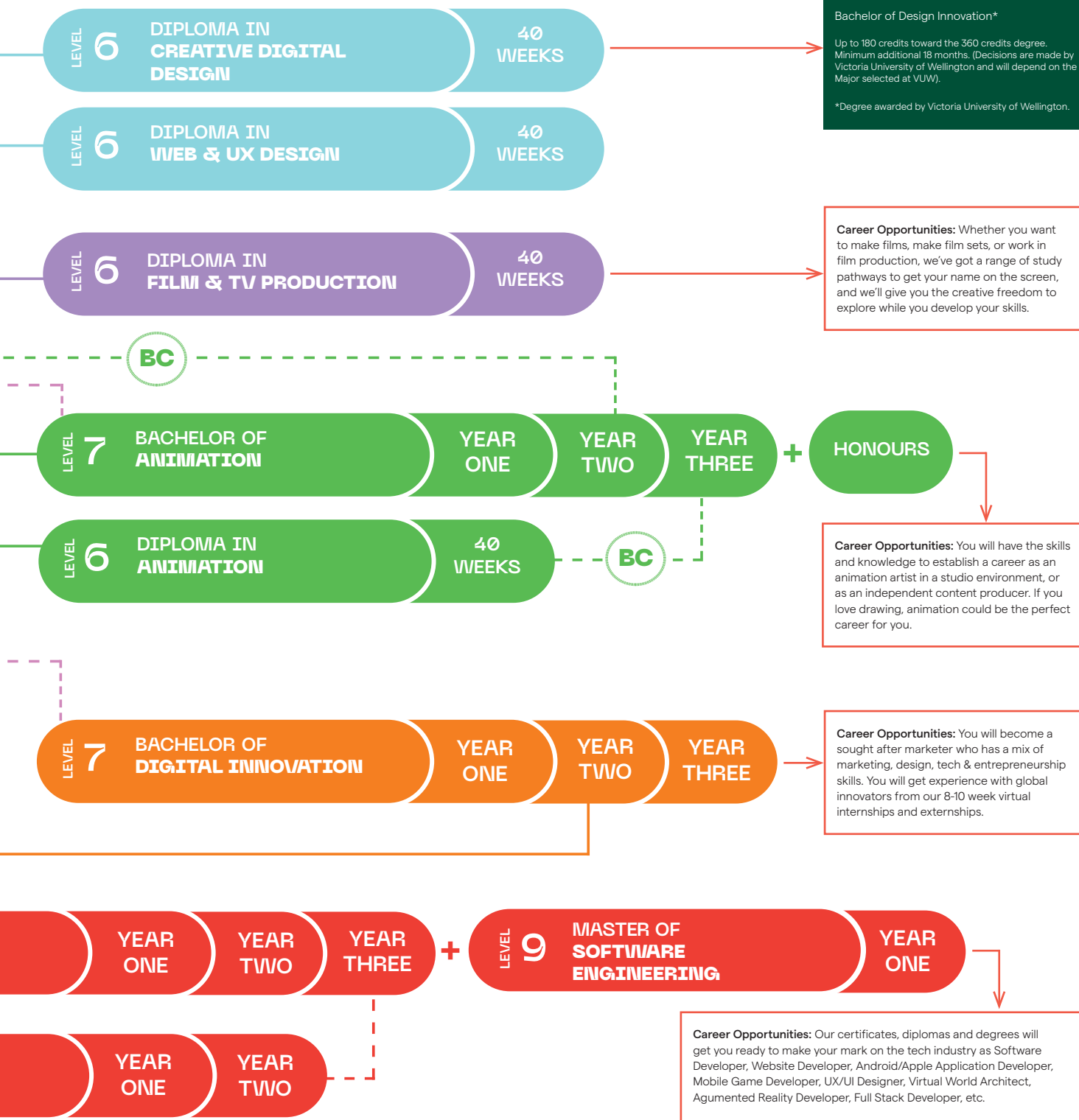


Bridging Component/Cross-credit Options (Successfully Completed)



Alternative Pathway (Approval Process Required)

Please note: All programmes are available for special application and portfolio review if applicants meet the requirements due to prior study and/or experience.





New Zealand School of Tourism

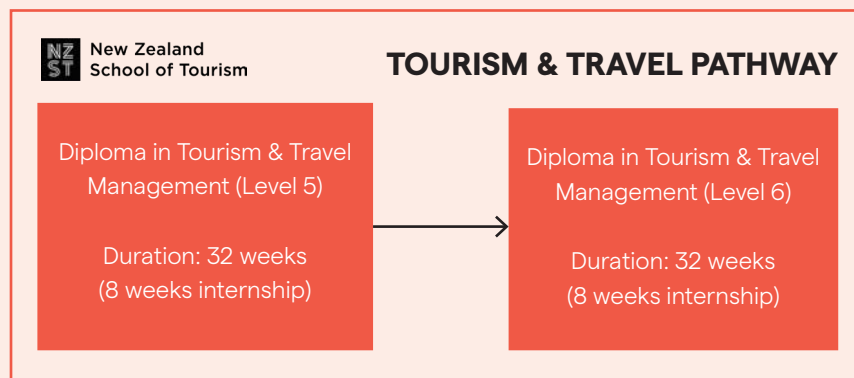
COURSE TITLE	NZQA LEVEL	QUALIFICATION	DURATION	CAMPUS	TUITION FEE	RESOURCE FEE
TOURISM						
Diploma in Tourism and Travel Management	5	New Zealand Diploma in Tourism and Travel (Level 5)	32 weeks (8 weeks internship)	Auckland City, Auckland Airport, Wellington, Christchurch, Hamilton	\$19,890	\$1,250
Diploma in Tourism and Travel Management	6	New Zealand Diploma in Tourism and Travel (Level 6)	32 weeks (8 weeks internship)	Auckland City, Auckland Airport, Wellington, Christchurch, Hamilton	\$19,890	\$1,250
Diploma in Tourism and Travel Management	5 + 6	New Zealand Diploma in Tourism and Travel (Level 6)	2 years	Auckland City, Auckland Airport, Wellington, Christchurch, Hamilton	Total: \$36,796 (Year 1: \$19,890 Year 2: 16,906)	Total: \$2,500 (Year 1: \$1,250 Year 2: \$1,250)
INTERNATIONAL FLIGHT ATTENDING						
Certificate in International Flight Attending*	4	New Zealand Certificate in Aviation (Flight Attendants) (Level 4)	14 weeks	TBC	TBC	TBC

*The programme is only available after July 2023. Before that, students who interested in International Flight Attending can apply for 16-week Certificate in Tourism, Airline and Flight Attendant Operations (TAFA) which includes Tourism subjects and another 4 weeks of practical flight attendant training.

Note: International Tuition and Resource fees are in New Zealand Dollars and include GST. Fees are subject to change and UP Education reserves the right to change this information at any time. Courses are delivered by New Zealand School of Tourism which is one of trading names for the registered PTE **Yoobee Colleges Limited** (NZQA Category One Private Training Establishment provider). Your enrolment is with Yoobee Colleges Ltd and your qualification is issued by Yoobee Colleges.

Please refer to our website for the most updated information nzschoolorntourism.co.nz

NZST PATHWAY CHART



INDUSTRY CONNECTIONS

New Zealand School of Tourism students remain in high demand and our strong connections throughout the industry means we're often the first port of call whenever job openings arise.

Our students are participating in international and domestic internships, with more than 100 students flying off to work overseas and many more interning and working at some of the top tourism operators throughout New Zealand.

Internships and work placements are a key part of studying with NZST, giving you the opportunity to live and work in amazing locations while you earn your qualification. They're also super important in helping you find a job once you graduate!

Career Opportunities:

Graduates of this qualification should feel confident in applying for management roles such as: Tourism Operations Manager, Business Development Manager, Travel Agent, Customer Service Manager, Trade Development Manager.

L5

L6





Elite

School of Beauty & Spa

COURSE CATEGORY	COURSE TITLE	NZQA LEVEL	QUALIFICATION	DURATION	CAMPUS	TUITION FEE	RESOURCE FEE
BEAUTY	Makeup Artistry and Skin Care	3	New Zealand Certificate in Makeup and Skin Care (Introduction) (Level 3)	18 weeks	Auckland, Hamilton, Tauranga	\$11,000	\$1,800
	Beauty and Body Essentials	4	New Zealand Certificate in Beauty Therapy (Level 4)	32 weeks	Auckland, Hamilton, Tauranga	\$18,000	\$1,800
	Professional Face, Body and Spa Therapies	5	New Zealand Diploma in Beauty Therapy (Level 5)	40 weeks (10 weeks internship)	Auckland, Hamilton, Tauranga	\$19,500	\$2,300

Note: International Tuition and Resource fees are in New Zealand Dollars and include GST. Fees are subject to change and UP Education reserves the right to change this information at any time. Courses are delivered by Elite School of Beauty & Spa which is one of trading names for the registered PTE **Yoobee Colleges Limited** (NZQA Category One Private Training Establishment provider). Your enrolment is with Yoobee Colleges Ltd and your qualification is issued by Yoobee Colleges.

Please refer to our website for the most updated information elitebeautyschool.co.nz



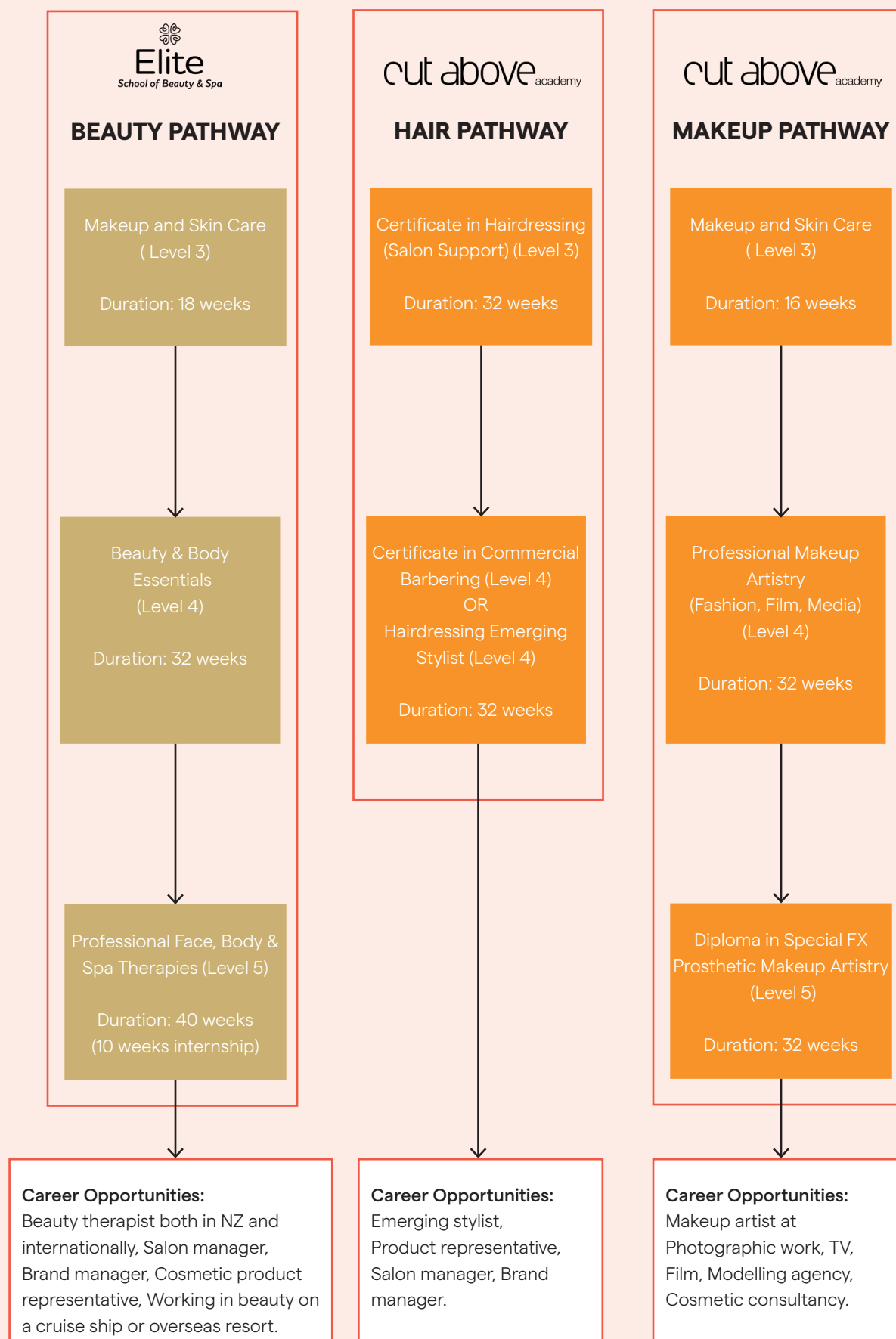


COURSE TITLE	NZQA LEVEL	QUALIFICATION	DURATION	CAMPUS	TUITION FEE	RESOURCE FEE
HAIR						
Certificate in Hairdressing Salon Support	3	New Zealand Certificate in Hairdressing Salon Support (Level 3)	32 weeks	Auckland, Hamilton, Tauranga	\$19,500	\$1,750
Certificate in Commercial Barbering	4	New Zealand Certificate in Commercial Barbering (Level 3)	32 weeks	Auckland, Hamilton, Tauranga	\$19,500	\$1,750
Certificate in Hairdressing Emerging Stylist	4	New Zealand Certificate in Hairdressing (Emerging Stylist) (Level 4)	32 weeks	Auckland, Hamilton, Tauranga	\$19,500	\$1,750
MAKEUP						
Certificate in Makeup and Skin Care (Introduction)	3	New Zealand Certificate in Makeup and Skin Care (Introduction)	16 weeks	Auckland	\$12,300	\$750
Professional Makeup Artistry for Fashion, Film and Media	4	New Zealand Certificate in Makeup Artistry (Level 4)	32 weeks	Auckland	\$19,500	\$1,750
Diploma in Special Effect and Prosthetic Makeup Artistry	5	New Zealand Diploma in Arts and Design (Level 5)	32 weeks	Auckland	\$19,500	\$1,750

Note: International Tuition and Resource fees are in New Zealand Dollars and include GST. Fees are subject to change and UP Education reserves the right to change this information at any time. Courses are delivered by Cut Above Academy which is one of trading names for the registered PTE **Yoobee Colleges Limited** (NZQA Category One Private Training Establishment provider). Your enrolment is with Yoobee Colleges Ltd and your qualification is issued by Yoobee Colleges. Please refer to our website for the most updated information cutabove.ac.nz



PATHWAY CHART







Study in Auckland

Auckland

Population: 1.65 M

Urban Area: 607.10 km²

Climate type: Subtropical

Summer Temp: 14-24°C.

Winter Temp: 7-15°C.

- 1st Most liveable city globally*
- 2nd most peaceful country in the world**
- 3rd in the world for Quality of living***

*2021 Global Liveability Index by the Economist Intelligence Unit (EIU)

**Global Peace Index 2021

***Mercer Quality of Living Rankings 2021

New Zealand is proudly multicultural, and we respect and welcome international students. Our largest city, Auckland, is a growing Asia-Pacific centre of excellence. With one in four residents born overseas, Auckland is one of the most diverse cities in the world. It is home to people from more than 180 ethnicities and is the world's largest Polynesian city. It also consistently rates as one of the best places globally to live and study in.

If you come here as an international student, you'll enjoy a high level of care. All schools and institutions are legally required to prioritise the well-being of international students.



1st

Most Liveable
city globally

The Global Liveability Index 2021



2nd

most peaceful
country in the world

Global Peace Index 2021



3rd

in the world for
Quality of living

Mercer Quality of Living Rankings 2021

Situated around a beautiful harbour, the city has a wide range of parks, beaches, forests and islands to explore. Public transport is easy to access, there are lots of different places to eat and drink and Auckland celebrates major festivals throughout the year including Diwali, Chinese New Year and Matariki (Māori New Year).

10 things you can only do in Auckland

1. See the world's largest collection of Māori taonga
2. Visit the world's largest penguin colony exhibit
3. Rediscover a lost island
4. Walk across the country in 5 hours
5. Ferry to the Riverhead, New Zealand's oldest riverside tavern
6. Visit Great Barrier Island's Dark Sky Sanctuary
7. Visit Waiheke Island 'the island of wine'
8. Kayak to Rangitoto Island
9. Board the "Shuckleferry"
10. SkyWalk and SkyJump at Auckland Sky Tower

Find out more at aucklandnz.com



27th
best student city
QS World University Rankings 2019



Top New Zealand city for
job opportunities, climate
and lifestyle



Commercial and business
centre of New Zealand



Hamilton City, Waikato

Population: 178.5K

Urban Area: 110.37 km²

Climate type: Oceanic

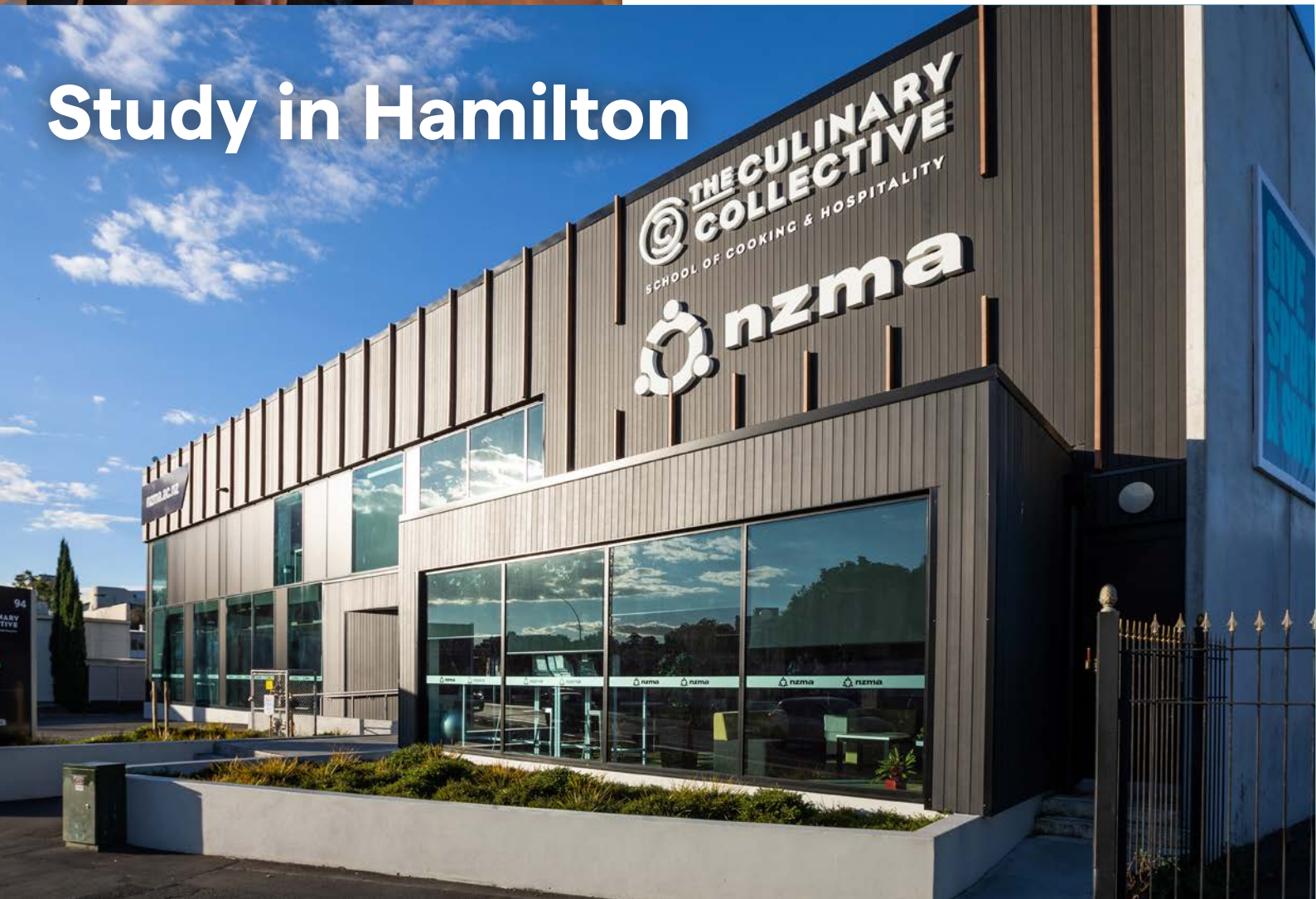
Summer Temp: 15-24°C.

Winter Temp: 6-14°C.

The gateway to the Central North Island, Hamilton (Kirikiriroa in Maori) is New Zealand's largest inland city, straddling the superb Waikato River. With a young, smart and innovative population, Hamilton's warm and welcoming spirit, rich history and contrasting splendours ensure visitors are spoilt for choice for places to relax, enjoy and do business. The city is in the heart of dairy farming country and loves sports, hosting several international cricket matches each season at Seddon Park.

Hamilton has a vibrant nightlife and students will find it easy to get around on a cycle - popular rides are along the river or through the beautiful Hamilton Gardens. The world-famous surf beach of Raglan and the Waitomo caves are just one hour away, plus Hobbit fans will be pleased to know that Hobbiton (aka Matamata) is nearby too. Find out more at visithamilton.co.nz

Study in Hamilton



Study in Wellington



Wellington City, Wellington

Population: 215.9K

Urban Area: 112.36 km²

Climate type: Marine West Coast

Summer Temp: 14-21°C.

Winter Temp: 7-12°C.

- 1st safest large city in New Zealand, and 7th in the world*
- 2nd most liveable city in the world**
- 3rd happiest city in the world***
- Highest average income in New Zealand^
- 2,000 hours of Sunshine each year

* Safe Cities Index 2021;

** Deutsche Bank Quality of Life Survey 2018;

*** World Happiness Report 2020

^ Data published by SEEK

The Wellington region is located in the lower North Island of New Zealand, and is made up of eight district and city council areas.

When you study in Wellington City you will enjoy a great quality of life, a diverse and welcoming environment, and a student experience to remember. You also have access to the city's many museums, archives, libraries, scientific institutes, cultural bodies, financial, legal and business institutions, and political and government agencies.

Our vibrant campus occupies the West Wing of the iconic Wellington Railway Station. Adjacent to the New Zealand Parliament, the city bus terminus and Victoria University of Wellington's Pipitea Campus.

Find out more at wellingtonnz.com



1st

Safest city in
New Zealand

2021 Safe Cities Index



2nd

Most liveable city in
the world

Deutsche Bank Quality of Life Survey



3rd

Happiest city in
the world

World Happiness Report 2020



1st
New Zealand's
friendliest city

Big 7 Travel Poll 2019



Unrivalled lifestyle

Suft, ski and bike in one day; with mountains, lakes and beaches on your doorstep



2nd largest
Tech Sector in
New Zealand

Christchurch, Canterbury

Population: 380.6K

Urban Area: 295.15 km²

Climate type: Temperate Oceanic Climate

Summer Temp: 13-21°C.

Winter Temp: 3-11°C.

- 1st New Zealand's friendliest city, and 7th in the world*
- 2nd largest Tech Sector in New Zealand and Canterbury is the nation's second largest manufacturing centre.
- The cost of accommodation is significantly lower than other cities in Australasia: 27% cheaper than Auckland, 42% cheaper than Sydney**
- Canterbury's health system is ranked the 6th best regional health system in the world, providing graduates the opportunity to work in a world-class ecosystem and environment.

Christchurch is the largest city in the South Island, the second largest in the country. Framed by the Pacific Ocean on one side and rugged mountains on the other side, Christchurch feels very different from the North Island.

It has a colourful, creative heart and is dotted with beautiful parks and gardens. A gateway to the outdoors, Christchurch gives students lots to do when they're not studying: hiking, mountain biking, surfing, rock climbing and skiing are all easily accessible from the city.

With a rich Māori and European history and the newest city centre in the country, Christchurch blends heritage buildings and museums with modern art galleries, architecture and unmissable street art.

Find out more at christchurchnz.com

* Big 7 Travel Poll 2019;

** 2022 Numbeo Cost of Living in Christchurch

Study in Christchurch



Useful Links

Links to Vocational Colleges Pre-Arrival Information

Here you will find a wealth of information – examples of what you will find are:

- o The Education Code of Practice
- o Prepare to travel to New Zealand
- o Airport pickup services
- o Sonder Student Safety App
- o Key contact information
- o Medical and travel insurance
- o Complaint & Policies
- o Orientation
- o Learn more about New Zealand

NZMA

<https://info.nzma.ac.nz/nzma-international-student-support>

The Culinary Collective

<https://info.culinarycollective.co.nz/tcc-international-student-support>

New Zealand Institute of Sport

<https://nzis.up.education/nzis-international-student-support>

Yoobee College of Creative Innovation

<https://info.yoobee.ac.nz/yoobee-international-student-support>

New Zealand School of Tourism

<https://info.nzschoooloftourism.co.nz/nzst-international-student-support>

Cut Above

<https://cutabove.up.education/cutabove-international-student-support>

Elite

<https://elite.up.education/elite-international-student-support>

UP EDUCATION

Website: <https://www.up.education/>

Online Application Portal (Enroller): <https://enroller.app/up-education>

Useful Emails

UP Education – International Centre:

international@up.education

UP Education Admissions:

admissions@up.education

UP Education Accommodation:

accommodation@up.education

Yoobee Colleges Ltd International Student Support:

international@yoobeecolleges.com

NZMA International Student Support:

studentsupport@nzma.ac.nz





facebook.com/upeducationnz



linkedin.com/company/upeducation



instagram.com/up.education



youtube.com/UpEducationNZ

Code of Practice for the Pastoral Care of International Students

UP Education, and its schools, is a signatory to The Education (Pastoral Care of Tertiary and International Learners) Code of Practice 2021. Published by the New Zealand Ministry of Education and administered by the New Zealand Qualifications Authority (NZQA), the Code is designed to ensure international students are well informed, safe and properly cared for. Visit: nzqa.govt.nz/the-code

Every effort was made to present accurate information in this 2023 Vocational Course Guide at the time of publication March 2023.

UP Education reserves the right to change information without notice where this is considered necessary or desirable.