

# CERTIFICATE IN FOUNDATION STUDIES

PROSPECTUS 2023

## AUCKLAND UNIVERSITY OF TECHNOLOGY

# AUT

NEW ZEALAND



**TOP 50**  
**WORLDWIDE**  
Young University



**NEW ZEALAND.COM**  
Licence No.100752

POWERED BY **UP EDUCATION**



# Welcome to Auckland University of Technology (AUT)

## **Nau mai, haere mai (Welcome)**

AUT is New Zealand's youngest, most dynamic, and fastest growing university. Based in Auckland, New Zealand's largest and most international city, we are a high performing university highly regarded for our international outlook, research, and teaching. International students, like you, are an incredibly important part of AUT and you have been missed since the border closures.

The AUT Certificate in Foundation Studies programme is designed to prepare you for entry into AUT's undergraduate degree programmes by equipping you with essential subject knowledge, English language proficiency, and tertiary study skills.

At AUT, our mission is to create great graduates. We work hard to offer a welcoming environment where people love to learn. We aim to approach students holistically, offering exceptional learning experiences, while supporting student wellbeing and providing student services and opportunities that support and inspire people from a vast range of diverse backgrounds and countries.

The programme you are entering is taught on our behalf by UP Education, and AUT and UP have a long history of working together to support students. This has been a successful pathway to university students for nearly 20 years, and after the successful completion of your studies, I look forward to welcoming you to AUT.

Ngā manaakitanga (With best wishes).



**Professor Damon Salesa**  
Vice-Chancellor





#1 IN AUSTRALASIA  
FOR  
GLOBAL  
RESEARCH  
IMPACT

TOP 1%  
UNIVERSITIES  
WORLDWIDE

5  
OUT OF 5  
EMPLOYABILITY  
QS STARS 2020-22

## Contents

- 2 Greetings from the Vice-Chancellor
- 4 Welcome to New Zealand
- 6 Welcome to Auckland
- 9 Auckland University of Technology
- 10 Degree options
- 11 Most in-demand degrees
- 12 AUT Certificate in Foundation Studies
- 15 UP International College New Zealand
- 16 Life on campus
- 18 Support on campus
- 20 Accommodation
- 21 How to enrol
- 22 Talk to our students

Cover: Top 50 Worldwide Young University: AUT is ranked 41th in the world based on the quality of our teaching, research, citations, international outlook and industry income (Times Higher Education World University Rankings 2022).

#1 global research impact: Ranked #1 in Australasia for the number of times our research is cited globally (Times Higher Education World University Rankings 2022).

Top 1%: Ranked in the world's top 201-250 universities (Times Higher Education World University Rankings 2022).

5 out of 5: QS Stars University Ranking.



# A great place to study

## New Zealand is an unbeatable place to live and study.

New Zealand is a smart choice for students seeking an exceptional international education in a unique and beautiful place. Our education system is one of the best in the world, and we offer a great lifestyle full of unique opportunities and experiences.

### Official languages

English, Māori,  
New Zealand Sign Language

### Currency

New Zealand dollar

### Capital city

Wellington

### Largest city

Auckland  
population 1.6 million

### Climate

Average 24°C (75°F) summer  
16°C (60°F) winter

### Warmest months

January, February

### Coldest months

July, August

### Population

Around 5.2 million



UP International College New Zealand is proudly a Licensee of The FernMark Licence Programme. A country of origin trademark programme, endorsed and recognised by the New Zealand Government.

The FernMark is used by New Zealand government departments across the world. It represents the story of who we are and where we're from, our New Zealand Story. It's a symbol people recognise and trust – a trademark that embodies our values of kaitiaki, integrity, ingenuity – the values of our New Zealand Story.

#### HISTORY OF THE SILVER FERN

The silver fern is one of New Zealand's most recognised, long-standing, and respected national symbols. Since the late 19th century our fern has been worn with pride by our sports teams, with **honour** by our soldiers and used to represent our country all over the world. But why is the silver fern so special? Māori hunters and warriors would use the silver underside of the fern leaves to find their way. When bent over, the fronds would catch the moonlight and illuminate a path through the forest.

Today, the silver fern is still guiding the way, just as it has for over 150 years. The New Zealand Government and key private businesses have helped grow the FernMark into a recognisable and valuable icon. Tourism New Zealand and New Zealand Trade and Enterprise have also adopted the silver fern as the country of origin symbol for New Zealand. And now, the FernMark gives us the opportunity to represent New Zealand on the world stage and bring international students on a journey to our shores through our New Zealand Story.





Active, healthy lifestyle



Strong ethnic communities



Slower pace of life, creating less stress



Low unemployment, rising wages



#2 safest country in the world<sup>1</sup>



Uncrowded and only 5 million people



Natural open living environments



Similar in size to Japan & United Kingdom

## Explore while you study

New Zealand is proudly multicultural, and we respect and welcome international students. The New Zealand Government's Code of Practice requires education providers to keep students safe and well during their study, including during their recreational time.

New Zealand has it all – excellent universities, a great lifestyle, diverse communities, vibrant cities, stunning natural scenery and an unbeatable range of outdoor activities, all within a small area. Cities such as Auckland and Wellington offer plenty of cultural activities, while those who love the great outdoors have glaciers, mountains, rainforests and coastlines to explore.

<sup>1</sup>Global Peace Index 2022



"There was something 'profoundly different' about New Zealand compared with the rest of the world, and it was something the world could learn from.

It's a certain sense of duty to each other, that you're part of the team, that you will sacrifice for each other. That empathy, that love and respect, whatever it is that binds you together – we hope to be as much a part of that as we can be."

*James Cameron*

Hollywood Director of Avatar



# Welcome to Auckland

## A great place to study and live.

Auckland is New Zealand's economic hub and biggest city - vibrant and busy, with clean air and friendly people.

A growing Asia-Pacific centre of excellence, Auckland consistently rates as one of the best places in the world to live and study.

**3rd**

most livable city  
in the world

Mercer Quality of Living Rankings 2019

**Top 40**

global student-friendly  
cities

QS World University Rankings 2023



Scan to learn more

**No.1**

commercial and business  
centre of New Zealand

**2nd**

most peaceful country  
in the world

Global Peace Index 2022

**Top**

city for job opportunities,  
climate and lifestyle

# Living costs

New Zealand is an affordable study destination, with options to suit every budget.

Cost of living	Homestay estimated weekly cost in NZ\$
Accommodation	\$300-\$360
Electricity, water & gas	Included in homestay fee
Mobile phone plan	\$5-\$15
Public transport	\$0-\$35
Food	Included in homestay fee + \$10 per school day for lunch
Free time activities	\$50-\$150

Costs can vary depending on lifestyle, accommodation, and hobbies and interests. However, for a reasonable standard of living, we think students need about \$20,000-\$25,000 a year.

## Additional costs

- Flights to and from New Zealand
- Tuition fees
- Clothes



## Thang Pham

from Vietnam

"I chose to study overseas because I consider this as a good opportunity to develop my English skills and seek more opportunities for my future career.

New Zealand was my first choice of destination due to the peacefulness and positive reviews from my peers and fellow students back home.

Based on my own experiences, I would recommend students to study in New Zealand!"







3+3

3 campuses &  
3 specialist facilities



60+ research centres and  
institutes with world-class  
expertise



29,100

students



100,000+

alumni



choose from over

250+

courses of study





# New Zealand's leading modern university

AUT is proud to be one of the world's best modern universities. Times Higher Education has ranked us among the top 1% (201-250) of universities in the world<sup>1</sup> and in the top 50 universities under 50 years of age<sup>2</sup>. We have an overall five-star rating from university rankings organisation QS, in addition to five-star ratings for Teaching, Employability, Research, Internationalisation, Facilities, Innovation and Inclusiveness<sup>3</sup>.

We're one of the largest universities in New Zealand and the fastest growing postgraduate study destination, with over 250 programmes, 2,200 academic staff and more than 100,000 alumni all over the world.

Collaboration and partnership underpin everything we do and we're connected to an extraordinary range of organisations worldwide; sharing expertise and resources, collaborating on groundbreaking research, and connecting students with industry leaders and employers.

## Widely known for academic excellence

AUT's mission is to create great graduates, and each member of our staff contributes to this. We offer exceptional learning experiences that prepare students to be successful wherever in the world their career may take them.

Study with us and you can enrol in our range of world-ranked subjects, which include our highly ranked health programmes and one of the world's best sport science schools.

Across all of our programmes, we encourage innovation and entrepreneurship, and the ability to explore new technologies, challenge routine thinking and solve problems in new ways. We embrace new technologies to lead the learning of tomorrow and prepare our students for the rapidly changing world. As a contemporary university we also place an emphasis on working across disciplines in our research, and teaching and learning.

## Research that shapes tomorrow

AUT is a leader in global research impact, and we're ranked first in Australasia by university rankings organisation Times Higher Education for the number of times our research is cited globally.

We have more than 60 research centres and institutes delivering leading research – from space science to artificial intelligence and robotics, and ecology to physical activity and nutrition.

1. World University Rankings 2022
2. Young University Rankings 2022
3. QS World University Rankings 2023



## Angie Sun Resolution Coordinator, FairWay Resolution Bachelor of Arts in Conflict Resolution

"At AUT I was exposed to so many new ideas, and it made me really excited about the future. The smaller, interactive classes made it easy to connect with like-minded people and approach the lecturers, and the workplace experience in the final year of my degree helped me bridge the gap between what I had learnt and how it applies in the real world. I now work for the same company I did my workplace experience through."



# Degree options

## Transition to university

Auckland University of Technology offers a wide range of undergraduate courses for you to choose from for your packaged offer. Our Education Counsellor is available to offer their expertise if you want to learn more about your chosen undergraduate degree. Once you successfully complete your foundation course, you will be awarded with a completion certificate from AUT.

Faculty	Programme
Culture and Society	<b>Bachelor of Arts</b> (Chinese Studies, Conflict Resolution, Creative Writing, Criminology and Criminal Justice, Culinary Arts, Economics, Education, English and New Media Studies, Event Management, Global Tourism, History, International Studies, Interpreting, Japanese Studies, Māori Development, Māori Media, New Zealand Sign Language and Deaf Studies, New Zealand Sign Language – English Interpreting, Psychology, Social Sciences)
	<b>Bachelor of International Hospitality Management</b> (Hospitality Enterprise, Hospitality Management)
	<b>Bachelor of Education</b> [Specialty] Teaching (Early Childhood, Primary) (available at North and South campuses)
Business, Economics and Law	<b>Bachelor of Business</b> (Accounting, Economics, Finance, Human Resource Management and Employment Relations, Information Systems, International Business and Strategy, Management and Leadership, Marketing)
	<b>Bachelor of Laws</b>
Design and Creative Technologies	<b>Bachelor of Architecture and Future Environments</b>
	<b>Bachelor of Communication Studies</b> (Advertising and Brand Creativity, Digital Communication, Journalism, Public Relations, Radio and Audio Media, Screen Production)
	<b>Bachelor of Creative Technologies</b>
	<b>Bachelor of Design</b> (Animation, Visual Effects and Game Design; Communication Design, Fashion Design, Industrial Design, Interaction Design, Spatial Design)
	<b>Bachelor of Visual Arts</b>
	<b>Bachelor of Science</b> (Analytics, Mathematical Modelling and Computation)
	<b>Bachelor of Computer and Information Sciences</b> (Data Science, Digital Services, Networks and Cybersecurity, Software Development)
	<b>Bachelor of Engineering (Honours)</b> (Architectural Engineering, Construction Engineering, Electrical and Electronic Engineering, Mechanical Engineering, Mechatronics Engineering, Software Engineering)
	<b>Bachelor of Engineering Technology</b> (Electrical Engineering, Electronic Engineering, Mechanical Engineering)
Health and Environmental Sciences	<b>Bachelor of Health Science</b> (Case Management, Counselling, Health Management, Public and Environmental Health)
	<b>Bachelor of Health Science</b> (Midwifery)
	<b>Bachelor of Health Science</b> (Nursing)
	<b>Bachelor of Health Science</b> (Occupational Therapy)
	<b>Bachelor of Health Science</b> (Oral Health)
	<b>Bachelor of Health Science</b> (Physiotherapy)
	<b>Bachelor of Health Science</b> (Podiatry)
	<b>Bachelor of Medical Laboratory Science</b>
	<b>Bachelor of Science</b> (Biological Science, Biomedical Science, Chemistry, Environmental Science, Food Science, Marine Science)
	<b>Bachelor of Sport and Recreation</b> (Coaching, Exercise Science and Nutrition, Health and Physical Education, Management, Outdoor Education, Sport and Exercise Science)



# Most in-demand degrees



## Bachelor of International Hospitality Management

Industry-relevant skills to launch a hospitality career in some of the world's most exciting and exotic destinations.

- Strong industry connections with top hotels, travel agencies, restaurants and tourism operators.
- Ranked in the top 75 best hospitality and tourism programmes in the world. Apprenticeships are available in the hospitality industry.
- Focus on issues of sustainability, digital integration and global citizenship.



## Bachelor of Communication Studies

AUT's communications degree is very well regarded in New Zealand and around the world.

- Our students pick up top jobs in the best companies and media outlets, and win many prestigious awards.
- Graduates are internationally recognised, having won the Sally Logan-Milne Young Practitioner of the Year award, CAANZ AXIS award, ORCA awards, Cannes International Advertising award and NZ Student Marketer of the Year award.



## Bachelor of Creative Technologies

Designed for this fast moving digital era that recognises the need to think creatively about the application of technology in society.

- New Zealand's most innovative bachelor's programme.
- Learn existing and new technologies, creative processes and strategies to collaborate with others to resolve complex challenges.
- Identify new opportunities and creative approaches to guide the transformation of industries and businesses.



## Bachelor of Computer and Information Sciences

Outstanding facilities and industry connections to help launch your career in computer and information sciences.

- Attend the ICT and Engineering Careers Fair where you can meet representatives from New Zealand's biggest and most exciting companies.
- Complete an industry research project in your final year.
- Connections with New Zealand's biggest and most exciting companies, from Datacom and Deloitte to Slingshot and Fisher & Paykel Healthcare.



## Bachelor of Health Science

Meet the changing needs of global healthcare. Specialise in a specific health discipline or become a health professional in a non-clinical role.

- 8 health clinic services housed in professional facilities with industry standard equipment.
- Our academic staff and postgraduate students often conduct groundbreaking research.
- AUT's health sciences degree is developed with input from district health boards and leading health organisations.



# AUT Certificate in Foundation Studies<sup>\*</sup>

## Who is this programme for?

Students who are currently studying at New Zealand secondary school Year 12 (NCEA Level 2), or

- Grade 11/12 (Asia), or
- Second/third year of senior high school, or equivalent
- For students who do not meet the requirements above, there is a Foundation Connect option<sup>\*\*</sup>.

## Prepare to study at university

- Study the content subjects you need for your degree programme, in English
- Upskill in academic English
  - Understand lectures clearly
  - Write stronger essays
  - Read written content more effectively
  - Take useful notes
  - Improve pronunciation and confidence when speaking/presenting
- Develop critical thinking skills
- Learn independent study skills

<sup>\*</sup>AUT Certificate in Foundation Studies is issued by UP Education on behalf of Auckland University of Technology.

<sup>\*\*</sup>Refer to the Foundation Connect Booklet for academic and other relevant information.

## Subjects<sup>^</sup>

### • Core

- English I
- English II
- Tertiary Study Skills
- Culture and Society

### • Elective (Choose four)

- Accounting (1 or 2)
- Algebra
- Biology (Cell or Organisms)
- Art and Design
- History
- Statistics
- Macroeconomics
- Microeconomics
- Physics (Mechanics or Electricity)
- Quantitative Methods

Note: Availability of subjects might change each term

## Enrol in a Certificate in Foundation Studies programme and receive:

1. An offer of place for the Certificate in Foundation Studies
2. A conditional offer of place for an undergraduate degree course at AUT (successfully complete the Certificate in Foundation Studies and receive an unconditional offer)

## To enter an AUT undergraduate programme:

- Achieve C- grade or better in each of four core subjects. A minimum B- in English II is required (or an IELTS score of 6.0 overall with a minimum 5.5 in all bands if English II is a C grade)
- Achieve 50% or better in a minimum of four optional academic subjects (some degrees require higher marks)<sup>\*\*\*</sup>

<sup>\*\*\*</sup>Refer to the progression requirement inserts for details

Over  
**95%**  
of students receive  
an offer from AUT



Scan to learn more





## Sample course progression

Programme option	English requirement*	2023												2024											
		J	F	M	A	M	J	J	A	S	O	N	D	J	F	M	A	M	J	J	A	S	O	N	D
Fast-track (6 months)	IELTS 6.0 (min. 5.0 in all bands) or equivalent																								
Standard (8–9 months)	IELTS 5.5 (min. 5.0 in all bands) or equivalent																								
Standard Plus (12 months)	IELTS 5.0 (min. 4.5 in all bands) or equivalent																								

## Foundation Connect

Delivered by UP Education, Foundation Connect provides a comprehensive, English-rich curriculum to prepare students for the Certificate in Foundation Studies. This six-month extension programme allows students to develop their English skills, confidence and apply these English skills in an academic setting. Foundation Connect includes engagement in mathematics and optional academic courses to give students a broader foundation for future learning. Successfully complete this course and you can proceed to the Certificate in Foundation Studies (Standard Plus).\*\*

\*Refer to the insert for accepted IELTS equivalents and academic entry requirements.



For more information visit our website:

<https://aut.up.education>



**Immanuel Phan**  
from Indonesia

"UP Education teachers are extremely experienced with international students and very helpful. They understand our challenges and often go above and beyond to make sure I pass my assignments. Our tutors also get in touch with us personally to talk things through and make sure we're progressing well and that we're happy."





## **Sattabut Chankhrueakerd**

from Thailand

"Teachers at UP International College New Zealand are always here for me and trying to help me as they can to make sure that my academic journey here is great. Moreover, the staff here was also helping me in all aspects such as my application for AUT. I feel really grateful."



# UP International College New Zealand

The AUT Certificate in Foundation Studies is taught at the UP International College New Zealand in the heart of Auckland's CBD, close to public transport, accommodation and a vibrant range of entertainment and cultural offerings. Students on this programme also have access to the world-class facilities at AUT.

Our modern, air-conditioned classrooms are well equipped with the latest multimedia capabilities, all computers have email and internet access, and computer laboratories are available for independent study from 8.30am-5pm. Other campus facilities include a large student common room, espresso coffee cart and café offering fresh food and drinks. All students enrolled in the AUT Certificate in Foundation Studies also have access to AUT's library, learning centre and excellent sporting facilities. Students in their final term have weekly meetings with teams at AUT, to make sure their transition is smooth and without issues.



"Auckland University of Technology in Auckland provides quality educational opportunities to help students transition into study and work. UP Education and AUT have a supportive programme of weekly meetings with our students in their final term, so that they have the knowledge, skills and understanding to start their university study with confidence. These meetings mean our students build their own relationships with university staff before they start their study. The three programmes for AUT at UP Education (Standard Plus, Standard and Fast-Track) are tailor-made to meet students' needs where they are at and to provide them with the tools to be successful in their programmes and into the future. Year after year, our highly qualified, creative and caring teachers provide excellent learning opportunities to students both onshore and offshore, and students who work hard and seize these opportunities reap the benefit of being admitted into a QS world-ranked, five star university, with top ratings for teaching, employability, research, internationalisation, facilities, innovation and inclusiveness."

**Bryce Pedersen – Head of College,  
UP International College New Zealand**



# student hub



## Life on campus

### UP International College New Zealand

Academic learning is the key to success, but learning outside the classroom is equally valuable. We encourage our students to make friends, have fun and fully embrace all aspects of New Zealand or Australian life.

1,000+ students from 50+ countries study at UP Education. Our main New Zealand campus is in the heart of central Auckland, with a second campus in Wellington where the Victoria University of Wellington Foundation Studies Programme is offered.

#### Student services

The wellbeing of students is our top priority as it is the key to both academic and personal success.

#### The tutor system

We encourage you to develop good study habits and we offer personalised support to help you reach your goals. Each student is assigned a tutor to supervise their study and provide individual guidance, meeting regularly to check progress, celebrate success and overcome challenges.

#### Parent website and community portal

Parents and caregivers are kept up-to-date with student progress via a web-based portal. A unique login and password gives access to personal information, including details about accommodation, daily timetables, attendance records and academic reports, as well as details of medical and travel insurance policies and student visas. The portal also has information on programmes, schedules and events.

#### Settling into study

Offering a level of care that sets us apart, UP Education provides help and support to all international students from the moment they contact us, to arriving in New Zealand and throughout their studies. We're here to help ensure life in New Zealand is happy and rewarding.

#### Orientation

Our orientation programme helps you settle in when you first arrive. You'll receive an information handbook that includes homestay and accommodation guidelines.

#### Transport and practical support

UP Education is on hand to provide students with the very best care and support. On arrival at the airport students will be greeted by an UP representative, who will deliver them to their accommodation. Those moving into a city apartment will be shown how to walk to the campus. For those booked into a homestay, the host family will ensure students know how to get to college, and help them buy tickets for public transport. On the first day of the course, support staff will be on hand to help organise banking, insurance, bus tickets and more.

Scan to learn more



"The top reason why I chose UPIC is the opportunity they can provide me. At every stage of the educational process, they place a strong emphasis on student's needs. Their support and motivation pushed me further and increased my ambition.

The teachers at UPIC do as much they can to support students in achieving academic success. They give the class a joyous atmosphere. It gives me more curiosity to understand the concepts."

## Kin Wang Ngai

from Hong Kong



## Auckland University of Technology

AUT has three campuses around Auckland: in the city, Manukau and on the North Shore. The City Campus is in the heart of Auckland city and not far from the UP International College campus. It is AUT's largest campus and home to most academic units and the central administration. The campus has cafés, restaurants and bars, as well as a gym, library and cycle racks, showers and lockers for students to use. To get a feel for what AUT looks like, take a virtual tour of the campuses: [aut.ac.nz/virtualtour](https://aut.ac.nz/virtualtour)

### AUT Student Support

Once you have commenced your degree study at AUT, the University has comprehensive student support services to make sure you have an amazing experience both inside and outside the classroom.

### Orientation programme

At Orientation you will meet fellow students studying your qualification, learn the campus layout, hear about support available to help you succeed, and get connected to the free AUT wifi.

### Library and learning support

AUT's library and learning support team offers a wide range of services and resources, including digital resources to help you develop your academic skills. The library runs workshops to help you get the most out of your studies and work smarter rather than harder, and a peer mentoring programme helps you learn from others who have already completed the courses you are studying.

### Free access to digital tools and resources

AUT offers students all the digital tools needed to succeed, including free wifi on campus, the full Office 365 suite for up to five devices and access to LinkedIn Learning (Lynda), a world leading online learning platform.

### Student Hub

No matter what the problem, the Student Hub is where you can get help – with anything from enrolment and student ID cards to budget, visa and immigration, StudyLink issues or accommodation.

Level 2, WA Building  
City Campus  
P New Zealand: 0800 288 864  
P International: +64 9 921 9099  
W [aut.ac.nz/studenthub](https://aut.ac.nz/studenthub)



# Support on campus

## UP International College of New Zealand

### Learning support

Studying overseas is exciting and rewarding – but sometimes it can also be challenging. We are here to provide all the support and care students need to achieve their goals. The role of the Deans is to support the tutors and teaching staff by monitoring attendance and academic progress, and carrying out disciplinary measures where required. If a teacher has a concern about a student, they talk to their tutor first, followed by the dean if necessary. Our teachers, tutors and deans work together closely to ensure students are happy and thriving.

### International student support

International student support officers help students with accommodation, health, course guidance and pathway options, as well as administration issues such as visa renewals, banking and insurance.

Scan to learn more



### Sonder student safety app

We have partnered with Sonder, a 24/7 personal safety and wellbeing service, to support all our international students. The Sonder app is for personal devices and has a number of features, like “Track My Journey” and “Check On Me”, that will help students live and study in New Zealand with confidence – if you are walking alone at night, going on a first date, or meeting up with a stranger to buy or sell goods, for example. Additionally, if you are feeling stressed, anxious, lonely or simply don’t know who to turn to, you can speak to Sonder’s multilingual support team anytime via live chat or phone, and they can even send in-person assistance if you need it.

### Caring for your health & wellbeing

We have staff trained and registered with Red Cross for minor health and wellbeing issues at the International College. If students need further medical treatment, a doctor is available by appointment.

### Studentsafe insurance for international students

The Education (Pastoral Care of Tertiary and International Learners) Code of Practice 2021 requires all international students studying in New Zealand to have appropriate health and travel insurance during their period of study.



"The International Student Support Team is here to help students with any queries relating to their studies, such as accommodation, health, course guidance, complaints, withdrawals and refunds, as well as administration issues such as visa renewals, claiming from insurance and organising student activities, such as orientation, graduation etc.

They aim to provide all students with a superior study experience at UP International College and therefore work closely with all internal and external stakeholders (which includes students, student recruitment, and the academic teams across all campuses) to ensure queries are resolved effectively and in a timely manner."

**Katie Gao – Student Service and Support Team Lead,  
UP International College New Zealand**

# Auckland University of Technology

## Getting you started on your uni journey

Studying at university is exciting and can be quite an adjustment. That's why AUT helps new students transition to university life by delivering a wide-ranging orientation programme on campus and online at the start of each semester. Orientation is complemented by a fun social programme to help you meet new friends and celebrate the new journey you're on. You'll be connected to our student ambassadors and navigators who are senior students at AUT – and were in your shoes not too long ago. Orientation is just one aspect; we also offer activities throughout the semester. To help you find your way through your student journey, AUT's app also provides up-to-date news, events, and information about AUT anytime, anywhere.

## Our Student Hubs – your place to get the support you need

AUT offers some of the most comprehensive student support services in New Zealand, and our Student Hub is where you can learn more about these services. Our Student Hubs are available both online and across our campuses, so you can get help and support when and where you need it. The Student Hub helps you navigate all the opportunities available to you, and provides you with the support to succeed, from when you apply to after you graduate.

## Helping you achieve your academic goals

At AUT, we do everything we can to support you to achieve your academic goals and set you up for a successful career. You'll have access to all the people, resources and technology you need to make the most of your learning opportunities.

**Learning support:** Our learning advisors, peer mentors and Studiosity are here to help you ace your assessments, with easy access to writing, research, notetaking, exam and reading skills support.

**Childcare:** We have childcare centres at the City and North Campus for student parents.

**Free technology access:** Access wifi on campus, the full Microsoft Office 365 suite and LinkedIn Learning (lynda.com), and enjoy remote access to all AUT computers to use specialist software unavailable on personal devices.

**Financial assistance:** Get support with food or transport vouchers, rent and living expenses if you're experiencing financial difficulty.

**Graduate Research School:** Postgraduate students can access leadership and support services from applications through to graduation, and dedicated staff to support you throughout your studies.

**Vibrant research culture:** Enjoy the many opportunities to collaborate, connect, share and celebrate ideas on multiple platforms across AUT.





# Accommodation

## Homestay

Available to all students, homestay is a great way of experiencing New Zealand culture and practising your English every day.

You will have your own room with a bed, desk, lamp and wifi, and all meals including breakfast and dinner Monday to Friday, and breakfast, lunch and dinner on weekends and public or school holidays. Laundry is also included.

- All homestays are thoroughly checked – the family is interviewed and the home inspected.
- All homestay providers sign a contract agreeing to rules and standards and undergo a vetting procedure by New Zealand Police.
- All students under 18 are visited in their accommodation quarterly by authorised accommodation assessors.

- All payments to the homestay provider are made via the UP Education Student Fees Trust.
- A 24-hour call centre number is provided in case of emergency.

## Other accommodation options

You could also choose to:

- Live with your parents
- Live with a designated caregiver (relative or family friend)
- Live in university accommodation
- Live in the student apartments (for students 18 and over only – this is the responsibility of the student or their parent/guardian or agent to arrange).

If you are under 18 at the start of your course, your accommodation arrangements must be approved by us.



# APPLICATION, ACCEPTANCE, PAYMENT AND ENROLMENT

## Step 1. Application

- Visit Enroller, our online enrolment portal, where you will be able to set up your account and manage the entire enrolment process from application through to arrival.  
[enroller.app/up-education-university-partnerships/enrolment-application](http://enroller.app/up-education-university-partnerships/enrolment-application)

## Step 2. Acceptance

- Open the unconditional offer that you received from [admissions@up.education](mailto:admissions@up.education).
- Read through the electronic Confirmation of Enrolment (eCoE) Enrolment Acceptance Form and Summary of Terms Implied by Statute Sign and initial at the requested sessions on the offer (normally page 4–6) and send them back to [admissions@up.education](mailto:admissions@up.education).

## Step 3. Payment

- Open browser on your computer/laptop/mobile/tablet and go to [upic.flywire.com](http://upic.flywire.com).
- Change the language if you need by clicking the globe icon on the up-left side of the page.
- Choose the country that you are paying from and type in the NZD amount shown in the invoice on your unconditional offer.  
For overseas students who are joining foundation programme online, you only need to put the lump sum amount of Tuition fee + Application fee + 50% of Resource fee + Examination fee. For students who join foundation programme on campus, you need to put the total cost. If you need help with your payment, contact our admissions team or go to [flywire.com/support](http://flywire.com/support).
- Follow the on-screen instructions to complete the payment.

## Step 4. Visa application

- Apply for your student visa online with Immigration New Zealand at [immigration.govt.nz/new-zealand-visas/apply-for-a-visa](http://immigration.govt.nz/new-zealand-visas/apply-for-a-visa)

## Step 5. Enrolment

- Once your payment is received, you will receive an email from [admissions@up.education](mailto:admissions@up.education) with your reconfirmation letter.
- Please pay attention to your email inbox, including spam and trash box, for emails from [studentsupport@up.education](mailto:studentsupport@up.education) as they include important information such as orientation schedules, subject selection links and deadlines. Read the emails carefully and reply to their emails with requested information to complete your enrolment process.

If you have any questions about the application process, contact the Admissions Team at [admissions@up.education](mailto:admissions@up.education)



# Talk to our students

Auckland University of Technology is a great place to study. But don't just take our word for it! Our students are happy to help you with any questions about life at AUT or studying in New Zealand.



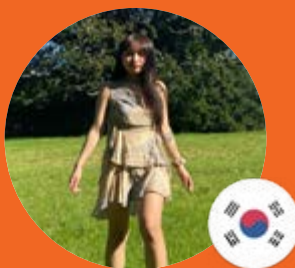
## Sattabut Chankhrueakerd

Hey! My name is Sattabut or you can call me TK. I'm a second year student at AUT. Preparing for University can be hard but don't you worry because I'm here to help you!



## Tommer Hu

Hi, my name is Tommer, i'm from Wuhan China. I've just finished my foundation course at UP International College and moving to AUT starting my BEng(Hons) programme. I'm looking forward to explore this exciting journey in New Zealand with you!



## Jiwoo Nam

Hi, I've been studying in New Zealand for four years as an international student, and I'm currently studying Digital Design at AUT. Since I'm very familiar with the environment here, I'm here to help you with any questions and curiosities about studying in New Zealand. Don't be shy or scared! I would love to have a chat with you! ;)





## Code of Practice for the Pastoral Care of International Students

UP Education, and its schools, is a signatory to The Education (Pastoral Care of Tertiary and International Learners) Code of Practice 2021. Published by the New Zealand Ministry of Education and administered by the New Zealand Qualifications Authority (NZQA), the Code is designed to ensure international students are well informed, safe and properly cared for. Visit: [nzqa.govt.nz/the-code](https://nzqa.govt.nz/the-code)

UP Education partners with leading universities in New Zealand and Australia to provide learning pathways to international students, equipping them with the knowledge, skills and confidence to excel at English-language universities.

Every effort was made to present accurate information in this publication at the time of printing. (23rd of September 2022)

UP Education reserves the right to change information without notice where this is considered necessary or desirable.



Facebook: <https://www.facebook.com/upeducationnz>



Instagram: <https://www.instagram.com/up.education/>



Youtube: <https://www.youtube.com/c/UPEducationNZ>



### All enquiries and applications to:

UP International College New Zealand  
345 Queen St  
Auckland  
New Zealand

**P** +64-9-307 5399

**E** [international@up.education](mailto:international@up.education)

**W** [aut.up.education](http://aut.up.education)



Scan the QR Code to visit our website.

